

Lone plus one	EFS ALL		EFS IS		EFS Social housing		MIS	
	Mean	%	Mean	%	Mean	%	£	%
Food	52.27	19.55	41.56	25.63	44.80	24.17	47.05	13.62
Alcohol	7.00	2.62	3.94	2.43	4.47	2.41	3.48	1.01
Tobacco	5.70	2.13	6.41	3.95	6.41	3.46	0.00	0.00
Clothing	16.95	6.34	11.33	6.99	12.90	6.96	16.41	4.75
Water rates	6.09	2.28	5.89	3.63	6.09	3.29	7.38	2.14
Council tax	15.29	5.72	13.77	8.49	13.68	7.38	15.55	4.50
Household insurances	3.47	1.30	1.10	0.68	1.03	0.56	1.99	0.58
Fuel	15.90	5.95	13.09	8.07	13.00	7.02	16.43	4.76
Other housing costs	14.80	5.54	2.83	1.74	2.12	1.15	2.12	0.61
Household goods	22.27	8.33	12.28	7.57	14.03	7.57	16.37	4.74
Childcare	6.34	2.37	0.77	0.48	2.42	1.31	135.05	39.10
Household services	9.95	3.72	6.42	3.96	7.86	4.24	6.72	1.95
Personal goods and services	12.92	4.83	8.07	4.98	8.77	4.73	19.47	5.64
Motoring	29.13	10.90	9.23	5.69	15.65	8.44	0.00	0.00
Other travel costs	5.77	2.16	3.47	2.14	4.67	2.52	17.16	4.97
Leisure	43.45	16.25	22.01	13.57	27.40	14.78	40.16	11.63
Total	267.31		162.17		185.31		345.35	
Rent/mortgage interest	89.33	33.42	92.04	56.76	80.24	43.30	64.07	18.55
Other excluded from budget	118.06		135.10		15.89		0.00	
unweighted base	1076		436		508			

Total weekly expenditure in each category

Food	47.05
Alcohol	3.48
Tobacco	0.00
Clothing	16.41
Water rates	7.38
Council tax	15.55
Household insurances	1.99
Fuel	16.43
Other housing costs	2.12
Household goods	16.37
Childcare	135.05
Household services	6.72
Personal goods and services	19.47
Motoring	0.00
Other travel costs	17.16
Leisure	40.16
Total	345.35
Rent/mortgage interest	64.07
Other excluded from budget	

ALL

Report

Mean	Ralc	Rtob	Rclothes	Rwater	Rct	Rhsins	Rfuel	Rhsoth	Rhhgds	Rchild	Rhhser	Rper	Rcar	Rtrans	Rleisure	Rhousing	Rexcluded	total expenditure less housing costs
52.26719	7.004042	5.697157	16.95286	6.08855	15.29411	3.470628	15.89853	14.80489	22.27403	6.33804	9.947852	12.91843	29.13109	5.771386	43.44647	89.32976	118.064321	267.3052644

IS

Report

Mean	Ralc	Rtob	Rclothes	Rwater	Rct	Rhsins	Rfuel	Rhsoth	Rhhgds	Rchild	Rhhser	Rper	Rcar	Rtrans	Rleisure	Rhousing	Rexcluded	total expenditure less housing costs
41.56049	3.944315	6.410798	11.33486	5.888137	13.7672	1.103089	13.09043	2.825884	12.27569	0.773662	6.415454	8.072776	9.228971	3.469645	22.0133	92.04344	135.101646	162.1746872

SOCIAL HOUSING

Report

Mean	Ralc	Rtob	Rclothes	Rwater	Rct	Rhsins	Rfuel	Rhsoth	Rhhgds	Rchild	Rhhser	Rper	Rcar	Rtrans	Rleisure	Rhousing	Rexcluded	total expenditure less housing costs
44.79659	4.46684	6.409909	12.90418	6.093361	13.68247	1.030186	12.99976	2.123868	14.03324	2.421345	7.863534	8.768175	15.64718	4.67498	27.39731	80.23702	15.8861581	185.3129284

All

12 category family type variable

		Frequency	Percent	Valid Percent	Cumulative Percent
Valid IS	single parent, 1 child	1076	100	100	100

12 category family type variable

		Frequency	Percent	Valid Percent	Cumulative Percent
Valid social housing	single parent, 1 child	436	100	100	100

12 category family type variable

		Frequency	Percent	Valid Percent	Cumulative Percent
Valid	single parent, 1 child	508	100	100	100

Food

	EFS all £	EFS IS £	MIS £	EFS all %	EFS IS %	MIS %
1	24.64	41.56	47.05	29.17	25.63	13.62
2	35.13	41.56	47.05	29.37	25.63	13.62
3	40.50	41.56	47.05	28.07	25.63	13.62
4	41.93	41.56	47.05	24.74	25.63	13.62
5	49.67	41.56	47.05	24.87	25.63	13.62
6	54.35	41.56	47.05	23.50	25.63	13.62
7	61.26	41.56	47.05	22.49	25.63	13.62
8	64.52	41.56	47.05	19.80	25.63	13.62
9	69.14	41.56	47.05	17.26	25.63	13.62
10	79.96	41.56	47.05	11.29	25.63	13.62
total	52.27	41.56	47.05	19.55	25.63	13.62

Alcohol

	EFS all £	EFS IS £	MIS £	EFS all %	EFS IS %	MIS %
1	1.36	3.94	3.48	1.61	2.43	1.01
2	2.98	3.94	3.48	2.49	2.43	1.01
3	4.17	3.94	3.48	2.89	2.43	1.01
4	4.45	3.94	3.48	2.63	2.43	1.01
5	5.53	3.94	3.48	2.77	2.43	1.01
6	6.00	3.94	3.48	2.59	2.43	1.01
7	8.36	3.94	3.48	3.07	2.43	1.01
8	9.50	3.94	3.48	2.92	2.43	1.01
9	9.70	3.94	3.48	2.42	2.43	1.01
10	17.55	3.94	3.48	2.48	2.43	1.01
total	7.00	3.94	3.48	2.62	2.43	1.01

Tobacco

	EFS all £	EFS IS £	MIS £	EFS all %	EFS IS %	MIS %
1	3.02	6.41	0.00	3.58	3.95	0.00
2	4.40	6.41	0.00	3.68	3.95	0.00
3	6.29	6.41	0.00	4.36	3.95	0.00
4	9.66	6.41	0.00	5.70	3.95	0.00
5	5.40	6.41	0.00	2.70	3.95	0.00
6	4.79	6.41	0.00	2.07	3.95	0.00
7	5.44	6.41	0.00	2.00	3.95	0.00
8	5.45	6.41	0.00	1.67	3.95	0.00
9	7.96	6.41	0.00	1.99	3.95	0.00
10	4.77	6.41	0.00	0.67	3.95	0.00
total	5.70	6.41	0.00	2.13	3.95	0.00

Clothing

	EFS all £	EFS IS £	MIS £	EFS all %	EFS IS %	MIS %
1	3.77	11.33	16.41	4.47	6.99	4.75
2	5.80	11.33	16.41	4.85	6.99	4.75
3	7.71	11.33	16.41	5.35	6.99	4.75
4	8.72	11.33	16.41	5.14	6.99	4.75
5	13.37	11.33	16.41	6.69	6.99	4.75
6	15.59	11.33	16.41	6.74	6.99	4.75
7	18.77	11.33	16.41	6.89	6.99	4.75
8	23.51	11.33	16.41	7.22	6.99	4.75
9	25.32	11.33	16.41	6.32	6.99	4.75
10	45.70	11.33	16.41	6.45	6.99	4.75
total	16.95	11.33	16.41	6.34	6.99	4.75

Water rates

	EFS all £	EFS IS £	MIS £	EFS all %	EFS IS %	MIS %
1	5.30	5.89	7.38	6.27	3.63	2.14
2	6.13	5.89	7.38	5.13	3.63	2.14
3	6.20	5.89	7.38	4.30	3.63	2.14
4	5.46	5.89	7.38	3.22	3.63	2.14
5	6.68	5.89	7.38	3.34	3.63	2.14
6	6.10	5.89	7.38	2.64	3.63	2.14
7	5.79	5.89	7.38	2.13	3.63	2.14
8	6.19	5.89	7.38	1.90	3.63	2.14
9	6.27	5.89	7.38	1.57	3.63	2.14
10	6.70	5.89	7.38	0.95	3.63	2.14
total	6.09	5.89	7.38	2.28	3.63	2.14

Council tax

	EFS all £	EFS IS £	MIS £	EFS all %	EFS IS %	MIS %
1	13.31	13.77	15.55	15.75	8.49	4.50
2	13.94	13.77	15.55	11.65	8.49	4.50
3	14.20	13.77	15.55	9.84	8.49	4.50
4	13.79	13.77	15.55	8.14	8.49	4.50
5	14.71	13.77	15.55	7.37	8.49	4.50
6	14.97	13.77	15.55	6.47	8.49	4.50
7	15.12	13.77	15.55	5.55	8.49	4.50
8	16.32	13.77	15.55	5.01	8.49	4.50
9	16.62	13.77	15.55	4.15	8.49	4.50
10	19.76	13.77	15.55	2.79	8.49	4.50
total	15.29	13.77	15.55	5.72	8.49	4.50

Household insurances

	EFS all £	EFS IS £	MIS £	EFS all %	EFS IS %	MIS %
1	0.49	1.10	1.99	0.58	0.68	0.58
2	1.14	1.10	1.99	0.96	0.68	0.58
3	1.74	1.10	1.99	1.21	0.68	0.58
4	1.43	1.10	1.99	0.84	0.68	0.58
5	2.61	1.10	1.99	1.31	0.68	0.58
6	3.66	1.10	1.99	1.58	0.68	0.58
7	4.13	1.10	1.99	1.52	0.68	0.58
8	4.65	1.10	1.99	1.43	0.68	0.58
9	6.02	1.10	1.99	1.50	0.68	0.58
10	8.57	1.10	1.99	1.21	0.68	0.58
total	3.47	1.10	1.99	1.30	0.68	0.58

Fuel

	EFS all £	EFS IS £	MIS £	EFS all %	EFS IS %	MIS %
1	6.37	13.09	16.43	7.54	8.07	4.76
2	11.83	13.09	16.43	9.89	8.07	4.76
3	14.22	13.09	16.43	9.85	8.07	4.76
4	15.10	13.09	16.43	8.91	8.07	4.76
5	15.31	13.09	16.43	7.66	8.07	4.76
6	15.16	13.09	16.43	6.56	8.07	4.76
7	18.15	13.09	16.43	6.66	8.07	4.76
8	20.40	13.09	16.43	6.26	8.07	4.76
9	19.77	13.09	16.43	4.93	8.07	4.76
10	22.39	13.09	16.43	3.16	8.07	4.76
total	15.90	13.09	16.43	5.95	8.07	4.76

Other housing costs

	EFS all £	EFS IS £	MIS £	EFS all %	EFS IS %	MIS %
1	0.55	2.83	2.12	0.65	1.74	0.61
2	0.57	2.83	2.12	0.47	1.74	0.61
3	1.08	2.83	2.12	0.75	1.74	0.61
4	1.41	2.83	2.12	0.83	1.74	0.61
5	2.44	2.83	2.12	1.22	1.74	0.61
6	3.42	2.83	2.12	1.48	1.74	0.61
7	8.63	2.83	2.12	3.17	1.74	0.61
8	10.69	2.83	2.12	3.28	1.74	0.61
9	27.73	2.83	2.12	6.92	1.74	0.61
10	89.00	2.83	2.12	12.57	1.74	0.61
total	14.80	2.83	2.12	5.54	1.74	0.61

Household goods

	EFS all £	EFS IS £	MIS £	EFS all %	EFS IS %	MIS %
1	4.36	12.28	16.37	5.16	7.57	4.74
2	5.27	12.28	16.37	4.40	7.57	4.74
3	6.26	12.28	16.37	4.34	7.57	4.74
4	9.71	12.28	16.37	5.73	7.57	4.74
5	12.88	12.28	16.37	6.45	7.57	4.74
6	16.37	12.28	16.37	7.08	7.57	4.74
7	19.29	12.28	16.37	7.08	7.57	4.74
8	22.22	12.28	16.37	6.82	7.57	4.74
9	34.18	12.28	16.37	8.53	7.57	4.74
10	89.73	12.28	16.37	12.67	7.57	4.74
total						

Childcare

	EFS all £	EFS IS £	MIS £	EFS all %	EFS IS %	MIS %
1	0.21	0.77	135.05	0.25	0.48	39.10
2	0.22	0.77	135.05	0.18	0.48	39.10
3	0.21	0.77	135.05	0.15	0.48	39.10
4	1.38	0.77	135.05	0.81	0.48	39.10
5	3.54	0.77	135.05	1.77	0.48	39.10
6	5.43	0.77	135.05	2.35	0.48	39.10
7	3.45	0.77	135.05	1.27	0.48	39.10
8	2.34	0.77	135.05	0.72	0.48	39.10
9	20.23	0.77	135.05	5.05	0.48	39.10
10	25.51	0.77	135.05	3.60	0.48	39.10
total	6.34	0.77	135.05	2.37	0.48	39.10

Household services

	EFS all £	EFS IS £	MIS £	EFS all %	EFS IS %	MIS %
1	4.77	6.42	6.72	5.65	3.96	1.95
2	5.87	6.42	6.72	4.91	3.96	1.95
3	6.68	6.42	6.72	4.63	3.96	1.95
4	7.65	6.42	6.72	4.51	3.96	1.95
5	8.07	6.42	6.72	4.04	3.96	1.95
6	8.91	6.42	6.72	3.85	3.96	1.95
7	11.33	6.42	6.72	4.16	3.96	1.95
8	12.97	6.42	6.72	3.98	3.96	1.95
9	11.77	6.42	6.72	2.94	3.96	1.95
10	21.05	6.42	6.72	2.97	3.96	1.95
total	9.95	6.42	6.72	3.72	3.96	1.95

Personal goods and services

	EFS all £	EFS IS £	MIS £	EFS all %	EFS IS %	MIS %
1	3.35	8.07	19.47	3.97	4.98	5.64
2	4.39	8.07	19.47	3.67	4.98	5.64
3	6.62	8.07	19.47	4.59	4.98	5.64
4	6.42	8.07	19.47	3.79	4.98	5.64
5	8.52	8.07	19.47	4.27	4.98	5.64
6	10.04	8.07	19.47	4.34	4.98	5.64
7	16.72	8.07	19.47	6.14	4.98	5.64
8	16.97	8.07	19.47	5.21	4.98	5.64
9	23.00	8.07	19.47	5.74	4.98	5.64
10	32.28	8.07	19.47	4.56	4.98	5.64
total	12.92	8.07	19.47	4.83	4.98	5.64

Motoring

	EFS all £	EFS IS £	MIS £	EFS all %	EFS IS %	MIS %
1	3.10	9.23	0.00	3.67	5.69	0.00
2	7.17	9.23	0.00	5.99	5.69	0.00
3	7.87	9.23	0.00	5.45	5.69	0.00
4	12.71	9.23	0.00	7.50	5.69	0.00
5	16.89	9.23	0.00	8.46	5.69	0.00
6	25.96	9.23	0.00	11.22	5.69	0.00
7	28.46	9.23	0.00	10.45	5.69	0.00
8	46.16	9.23	0.00	14.16	5.69	0.00
9	51.44	9.23	0.00	12.84	5.69	0.00
10	89.11	9.23	0.00	12.59	5.69	0.00
total	29.13	9.23	0.00	10.90	5.69	0.00

Other travel costs

	EFS all £	EFS IS £	MIS £	EFS all %	EFS IS %	MIS %
1	1.47	3.47	17.16	1.74	2.14	4.97
2	2.51	3.47	17.16	2.10	2.14	4.97
3	3.69	3.47	17.16	2.56	2.14	4.97
4	4.26	3.47	17.16	2.51	2.14	4.97
5	5.83	3.47	17.16	2.92	2.14	4.97
6	4.81	3.47	17.16	2.08	2.14	4.97
7	5.70	3.47	17.16	2.09	2.14	4.97
8	6.90	3.47	17.16	2.12	2.14	4.97
9	11.03	3.47	17.16	2.75	2.14	4.97
10	11.24	3.47	17.16	1.59	2.14	4.97
total	5.77	3.47	17.16	2.16	2.14	4.97

Leisure

	EFS all £	EFS IS £	MIS £	EFS all %	EFS IS %	MIS %
1	8.40	22.01	40.16	9.95	13.57	11.63
2	12.28	22.01	40.16	10.26	13.57	11.63
3	16.84	22.01	40.16	11.67	13.57	11.63
4	25.39	22.01	40.16	14.98	13.57	11.63
5	28.25	22.01	40.16	14.15	13.57	11.63
6	35.70	22.01	40.16	15.43	13.57	11.63
7	41.78	22.01	40.16	15.34	13.57	11.63
8	57.10	22.01	40.16	17.52	13.57	11.63
9	60.43	22.01	40.16	15.08	13.57	11.63
10	144.69	22.01	40.16	20.44	13.57	11.63
total	43.45	22.01	40.16	16.25	13.57	11.63

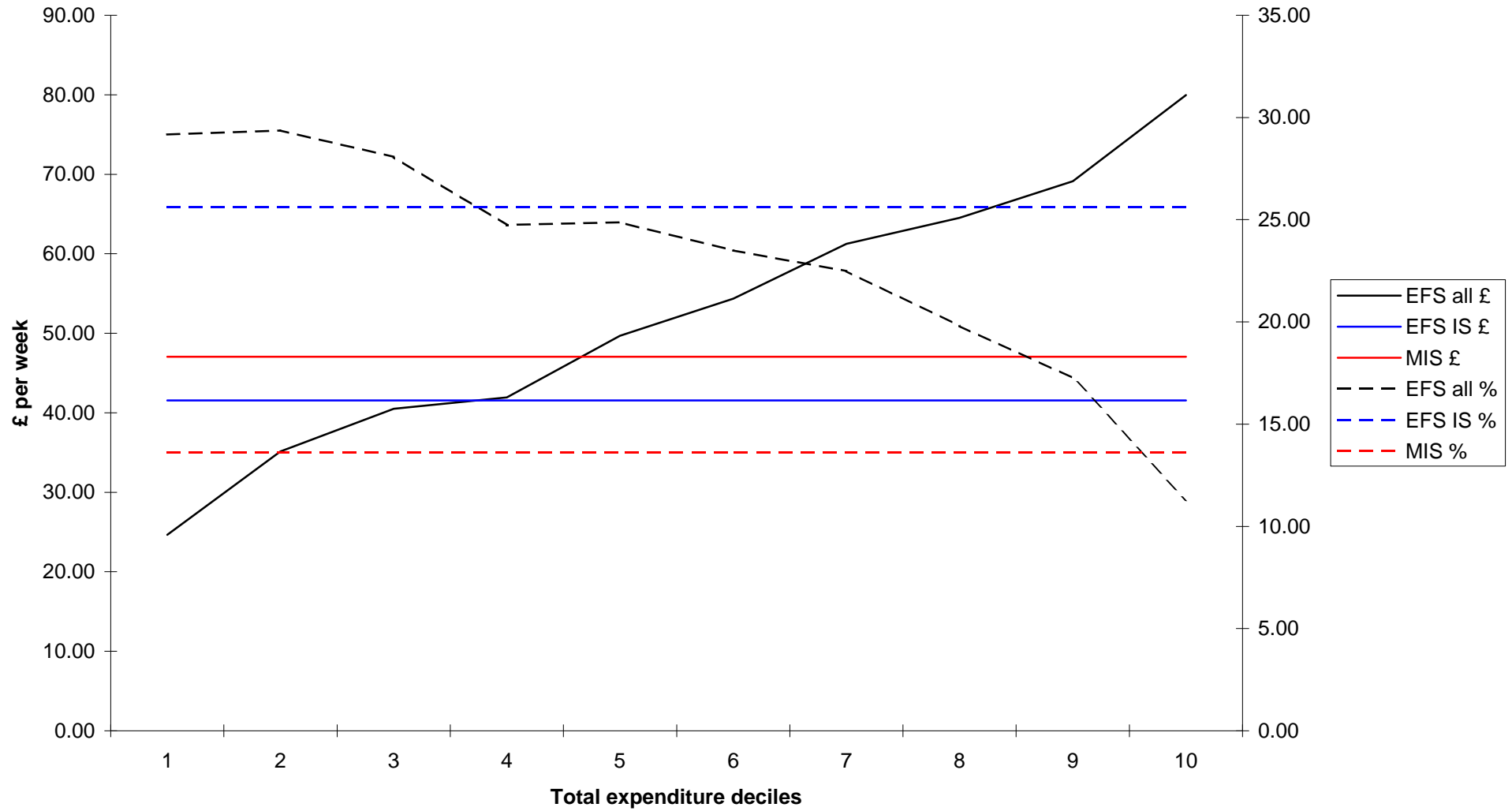
Rent/mortgage interest

	EFS all £	EFS IS £	MIS £	EFS all %	EFS IS %	MIS %
1	90.42	92.04	64.07	107.02	56.76	18.55
2	90.27	92.04	64.07	75.46	56.76	18.55
3	85.20	92.04	64.07	59.05	56.76	18.55
4	88.89	92.04	64.07	52.45	56.76	18.55
5	86.10	92.04	64.07	43.11	56.76	18.55
6	80.24	92.04	64.07	34.70	56.76	18.55
7	79.52	92.04	64.07	29.19	56.76	18.55
8	92.23	92.04	64.07	28.30	56.76	18.55
9	87.98	92.04	64.07	21.96	56.76	18.55
10	111.93	92.04	64.07	15.81	56.76	18.55
total	89.33	92.04	64.07	33.42	56.76	18.55

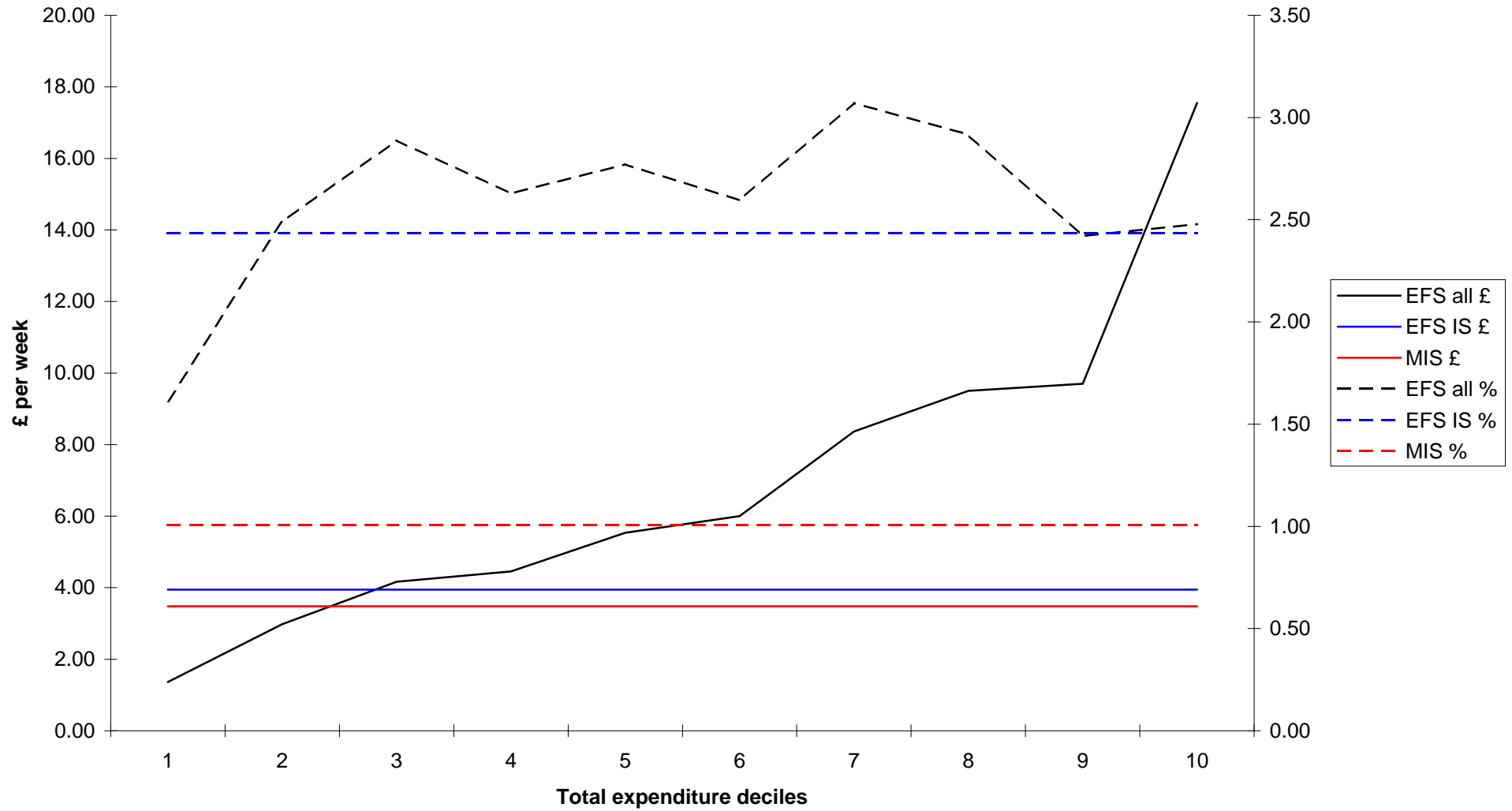
Report

Mean	Report																		total
total expenditure I	Rfood	Ralc	Rtob	Rclothes	Rwater	Rct	Rhsins	Rfuel	Rhsoth	Rhhgds	Rchild	Rhhser	Rper	Rcar	Rtrans	Rleisure	Rhousing	Rexcluded	expenditure less housing costs
1	24.6427	1.361749	3.022161	3.773148	5.299203	13.308	0.493363	6.368661	0.546063	4.359657	0.213162	4.774858	3.352509	3.098835	1.466712	8.404287	90.41733	4.8165051	84.48506926
2	35.13344	2.978559	4.396654	5.802659	6.13381	13.93563	1.14454	11.83479	0.568074	5.267469	0.220812	5.870137	4.387929	7.168126	2.509443	12.27501	90.27392	7.9744181	119.6270887
3	40.49749	4.167936	6.294812	7.713464	6.198495	14.19992	1.741903	14.21794	1.080638	6.264183	0.209444	6.677293	6.615912	7.86983	3.689945	16.83535	85.19866	17.677454	144.2745474
4	41.93149	4.452695	9.664198	8.715428	5.45674	13.78652	1.428582	15.10306	1.405563	9.706818	1.377777	7.647957	6.422198	12.70982	4.260402	25.39343	88.8906	15.561909	169.462675
5	49.67093	5.53329	5.401582	13.36897	6.677314	14.71301	2.611918	15.30706	2.443644	12.88101	3.537763	8.065241	8.524881	16.89207	5.827618	28.2514	86.09794	29.79711	199.7077116
6	54.35462	6.000683	4.789079	15.59481	6.099989	14.97405	3.662451	15.16196	3.422801	16.37219	5.433747	8.909145	10.04448	25.95631	4.806657	35.69733	80.24475	579.27927	231.2802955
7	61.2551	8.364238	5.44195	18.77184	5.793995	15.11895	4.128024	18.15104	8.633997	19.29185	3.446305	11.32789	16.71563	28.4605	5.697095	41.78454	79.52025	67.796054	272.3829345
8	64.52268	9.501099	5.448892	23.51352	6.188741	16.32419	4.650454	20.39885	10.68791	22.22064	2.335135	12.9702	16.97245	46.15824	6.897792	57.10231	92.23088	91.900017	325.8930909
9	69.14292	9.69726	7.960771	25.32057	6.269848	16.61892	6.022988	19.76504	27.72843	34.17898	20.22693	11.76689	23.00233	51.43653	11.03053	60.42579	87.98128	125.73408	400.5947229
10	79.9608	17.55082	4.768428	45.69527	6.69557	19.763	8.566077	22.39375	88.99822	89.73405	25.51147	21.05207	32.28186	89.1113	11.23613	144.6883	111.928	232.94697	708.0070779
Total	52.26719	7.004042	5.697157	16.95286	6.08855	15.29411	3.470628	15.89853	14.80489	22.27403	6.33804	9.947852	12.91843	29.13109	5.771386	43.44647	89.32976	118.06432	267.3052644

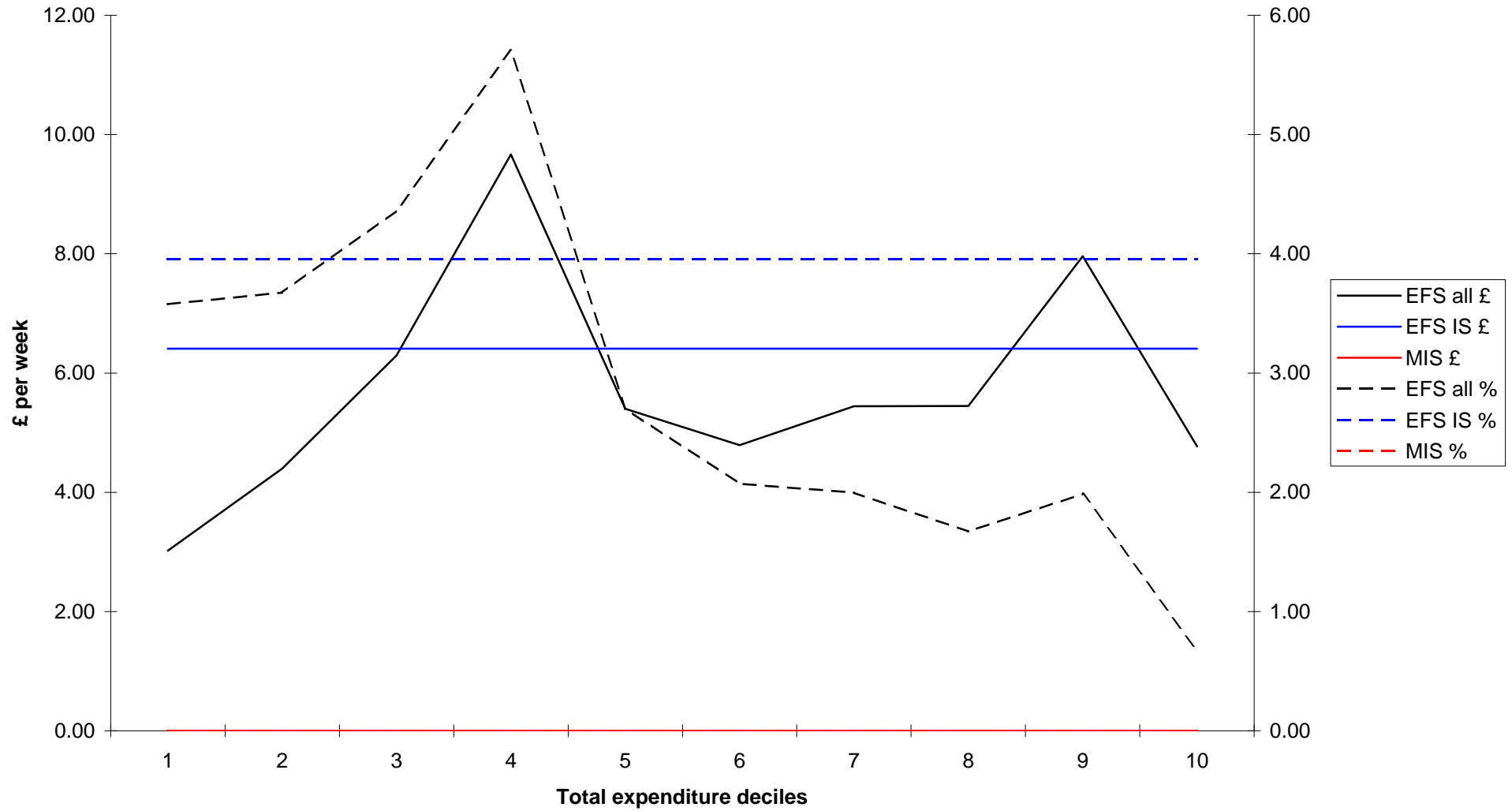
Comparison of MIS and EFS expenditure: food



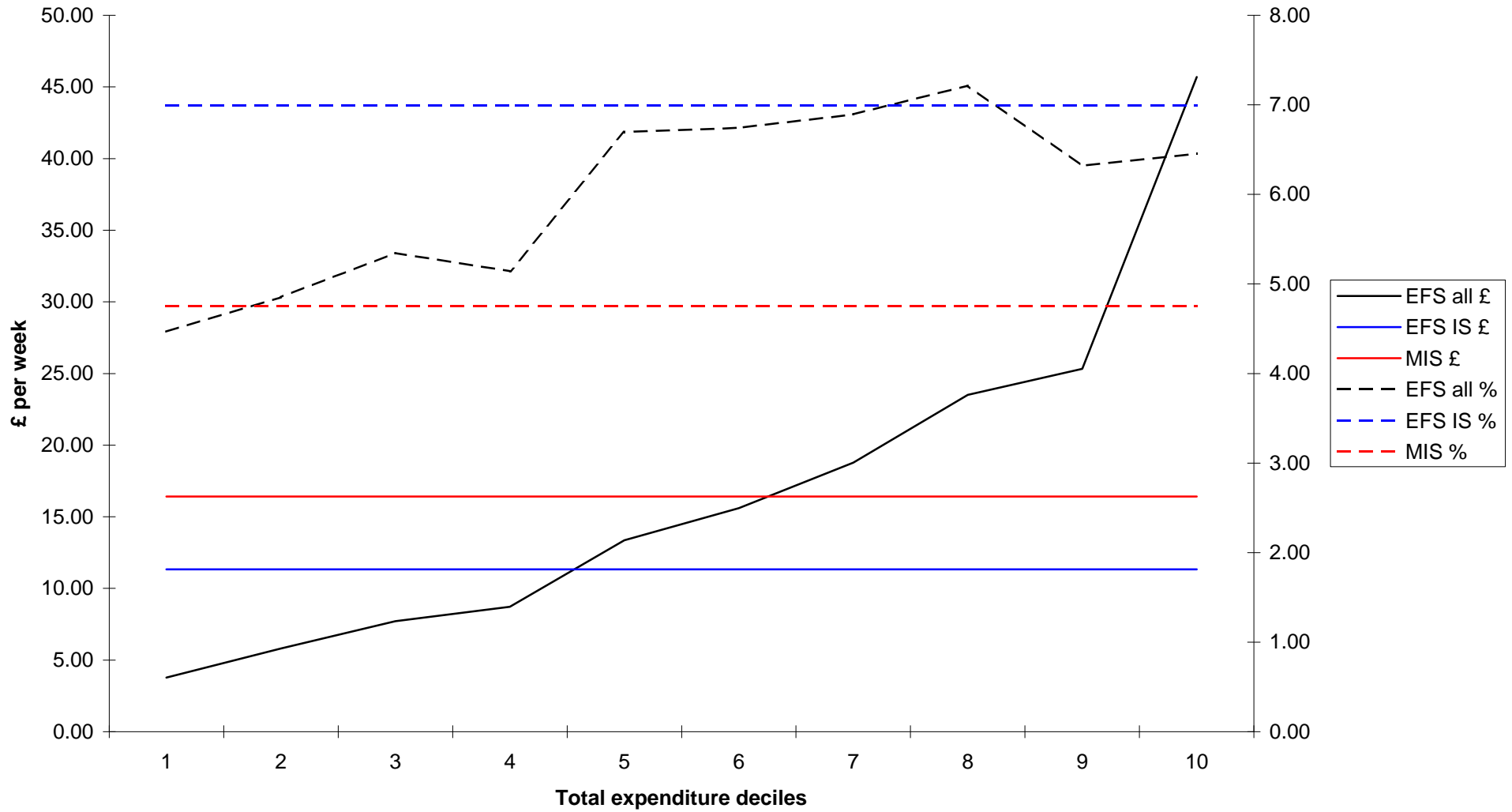
Comparison of MIS and EFS expenditure: alcohol



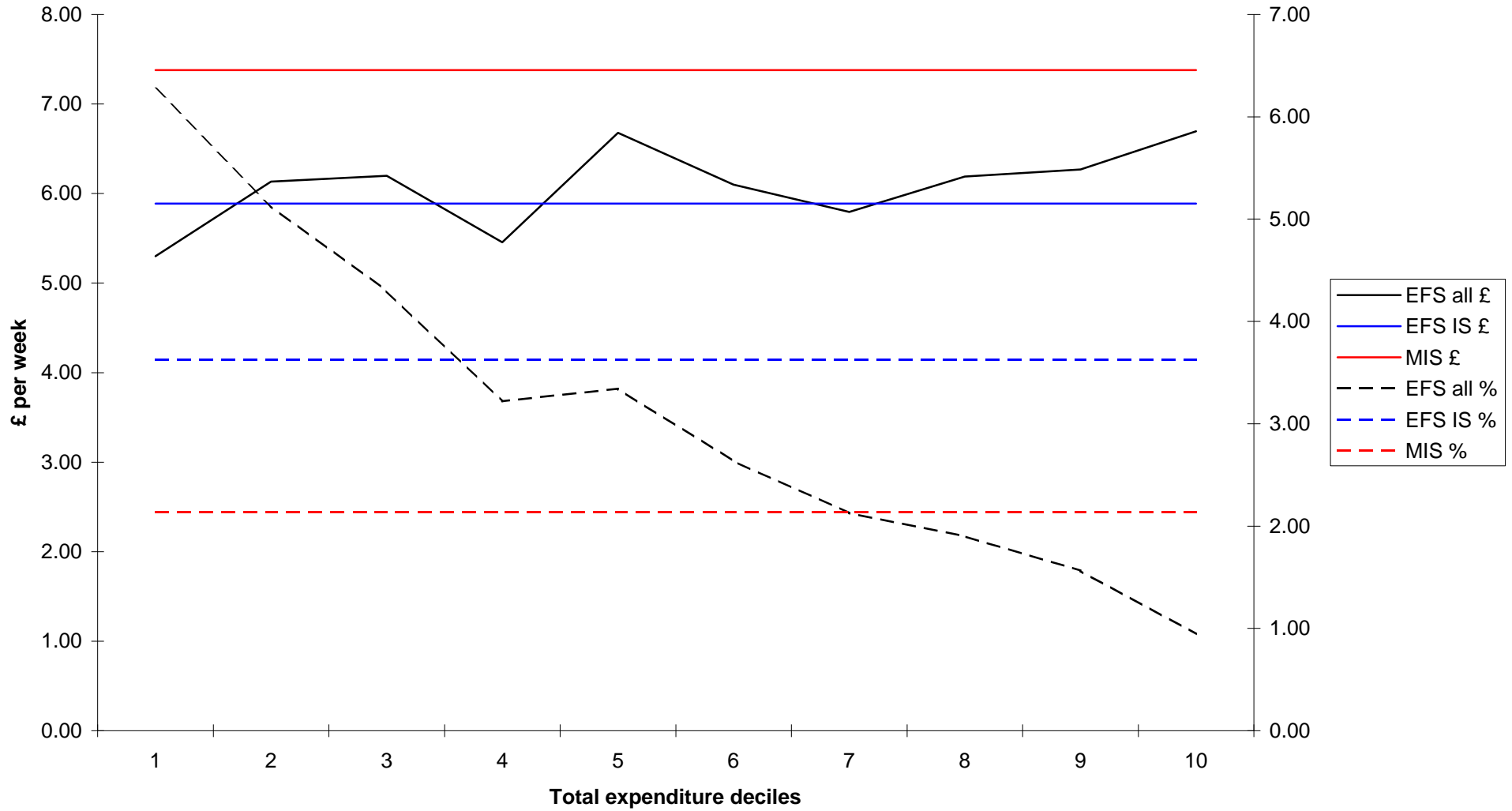
Comparison of MIS and EFS expenditure: tobacco



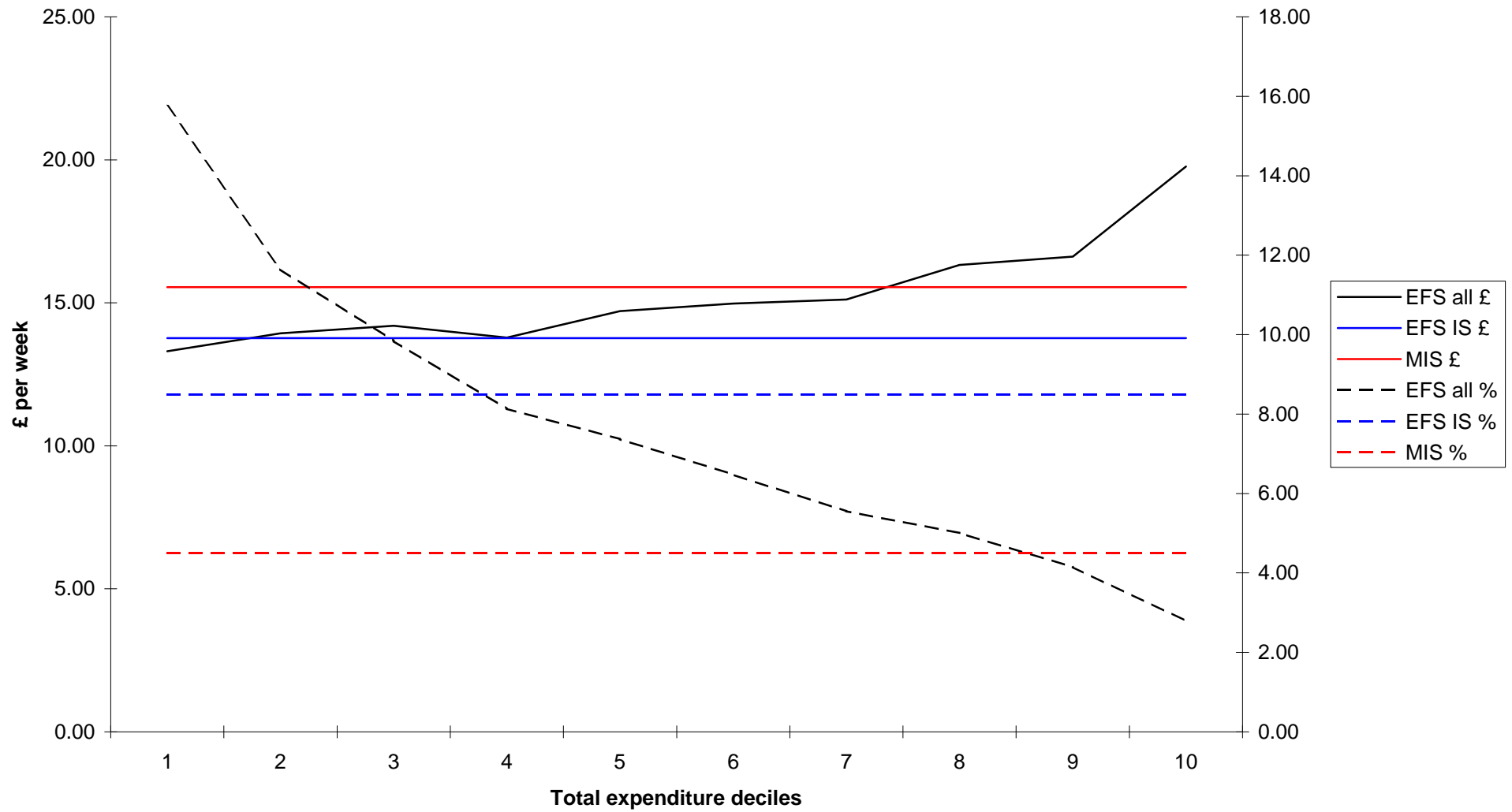
Comparison of MIS and EFS expenditure: clothing



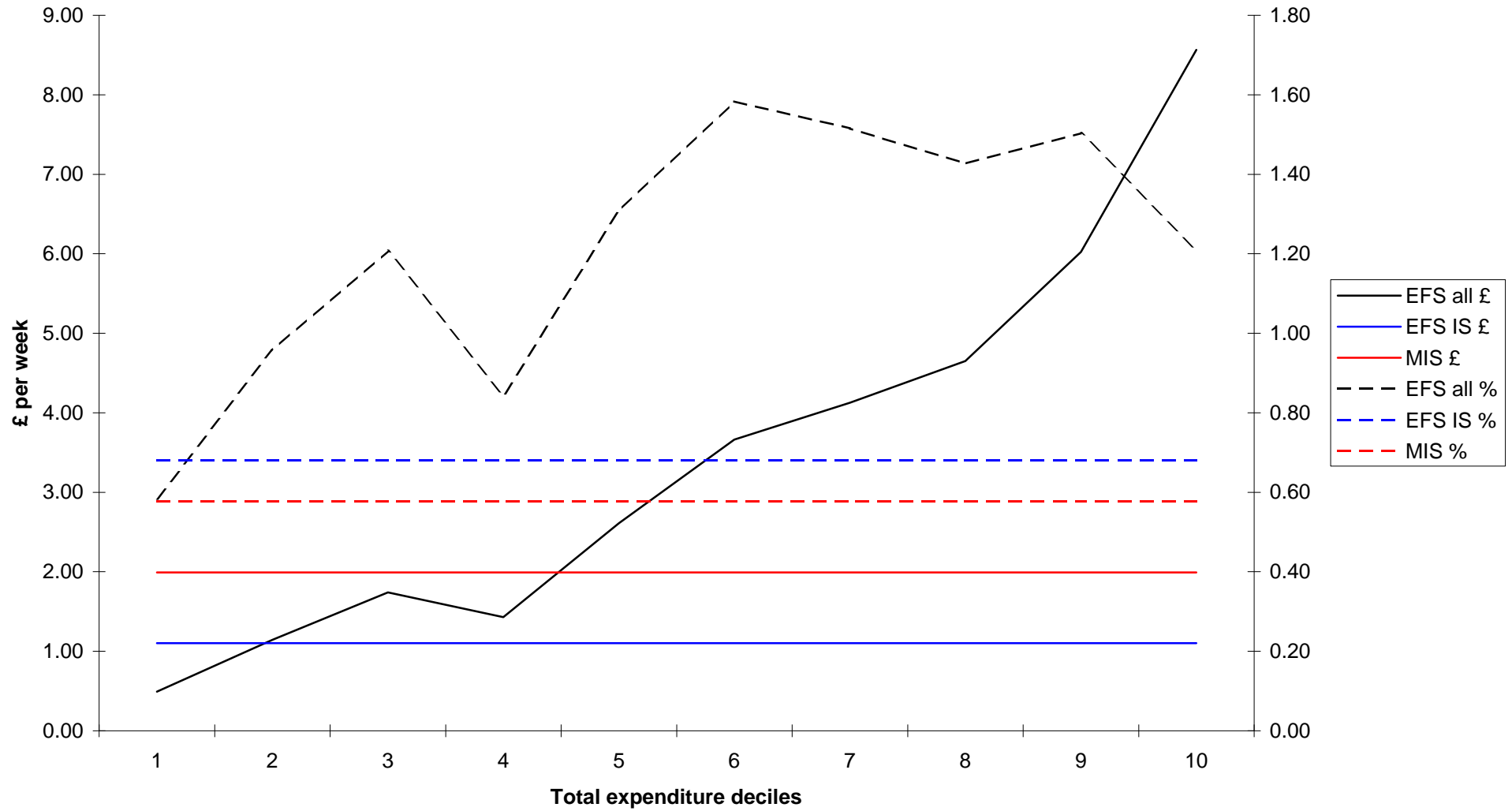
Comparison of MIS and EFS expenditure: water rates



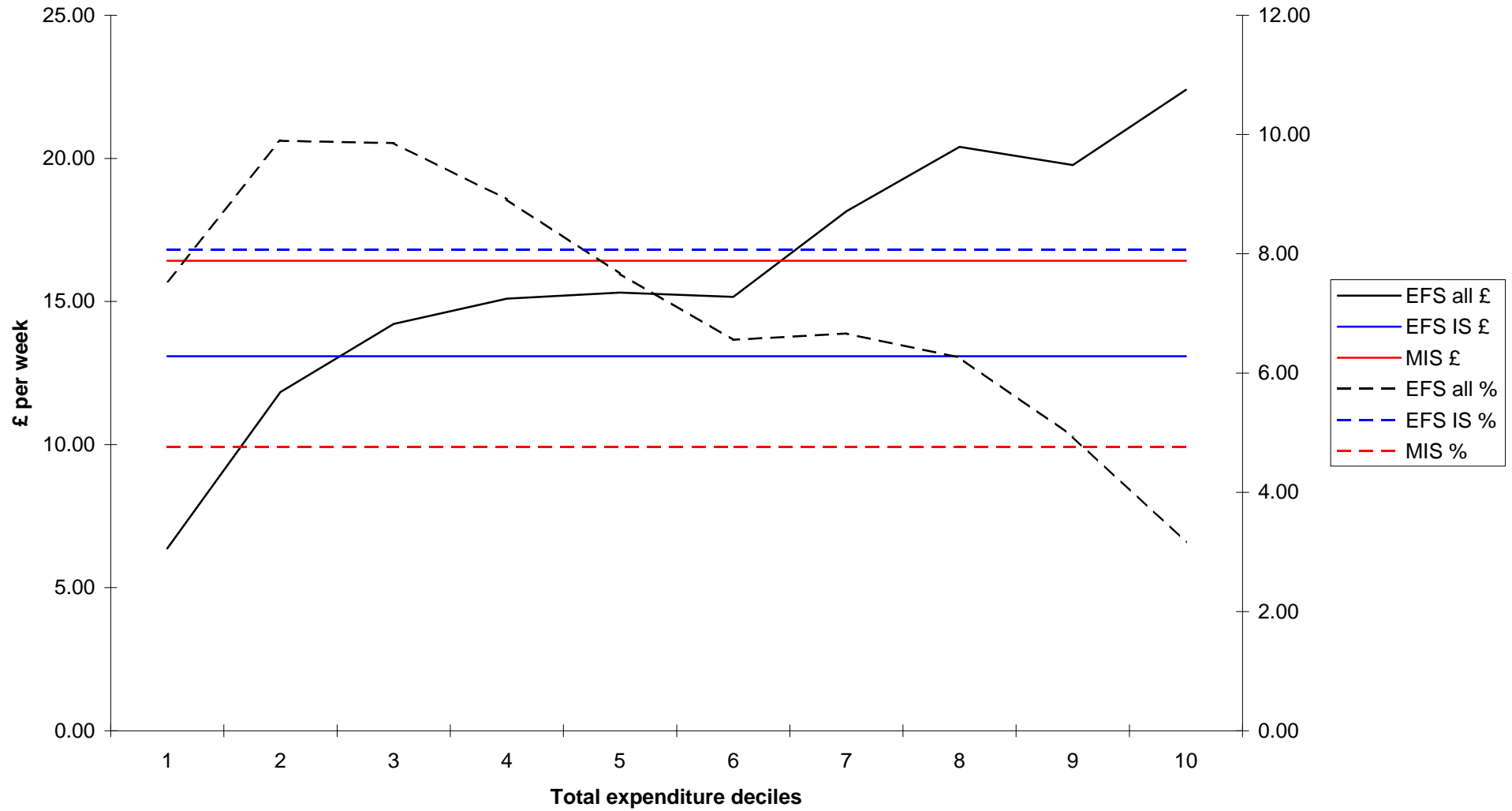
Comparison of MIS and EFS expenditure: council tax



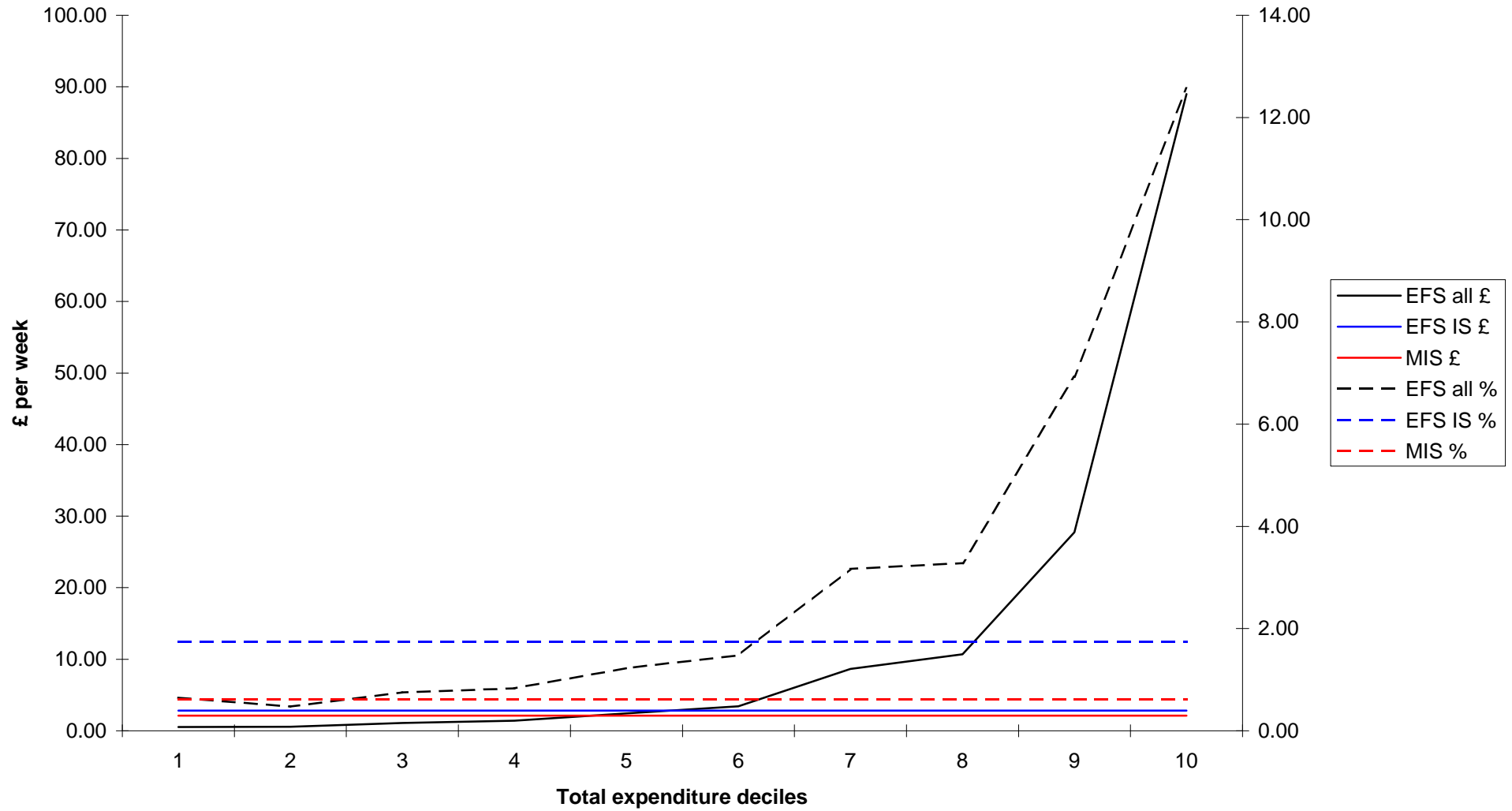
Comparison of MIS and EFS expenditure: household insurances



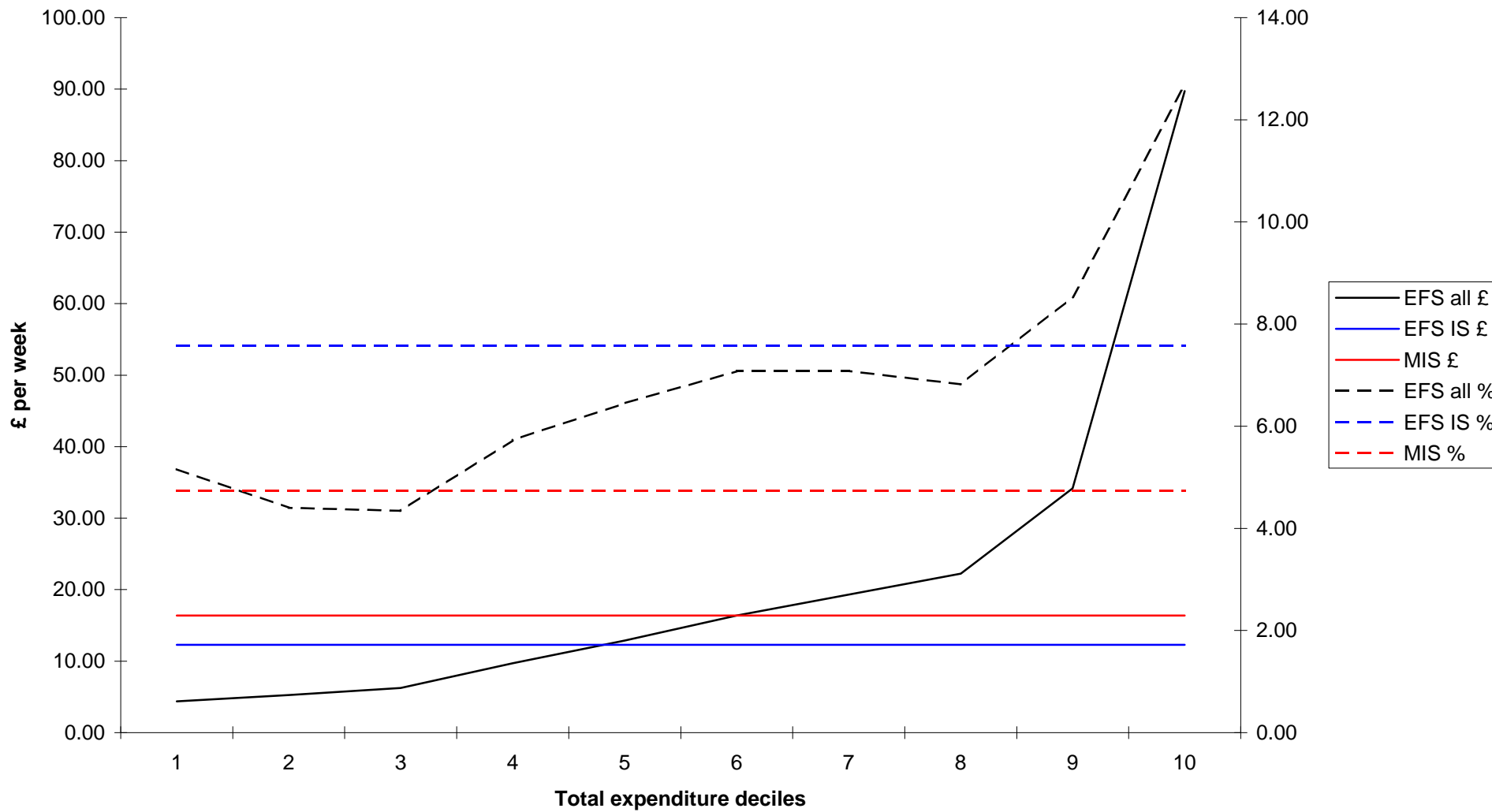
Comparison of MIS and EFS expenditure: fuel



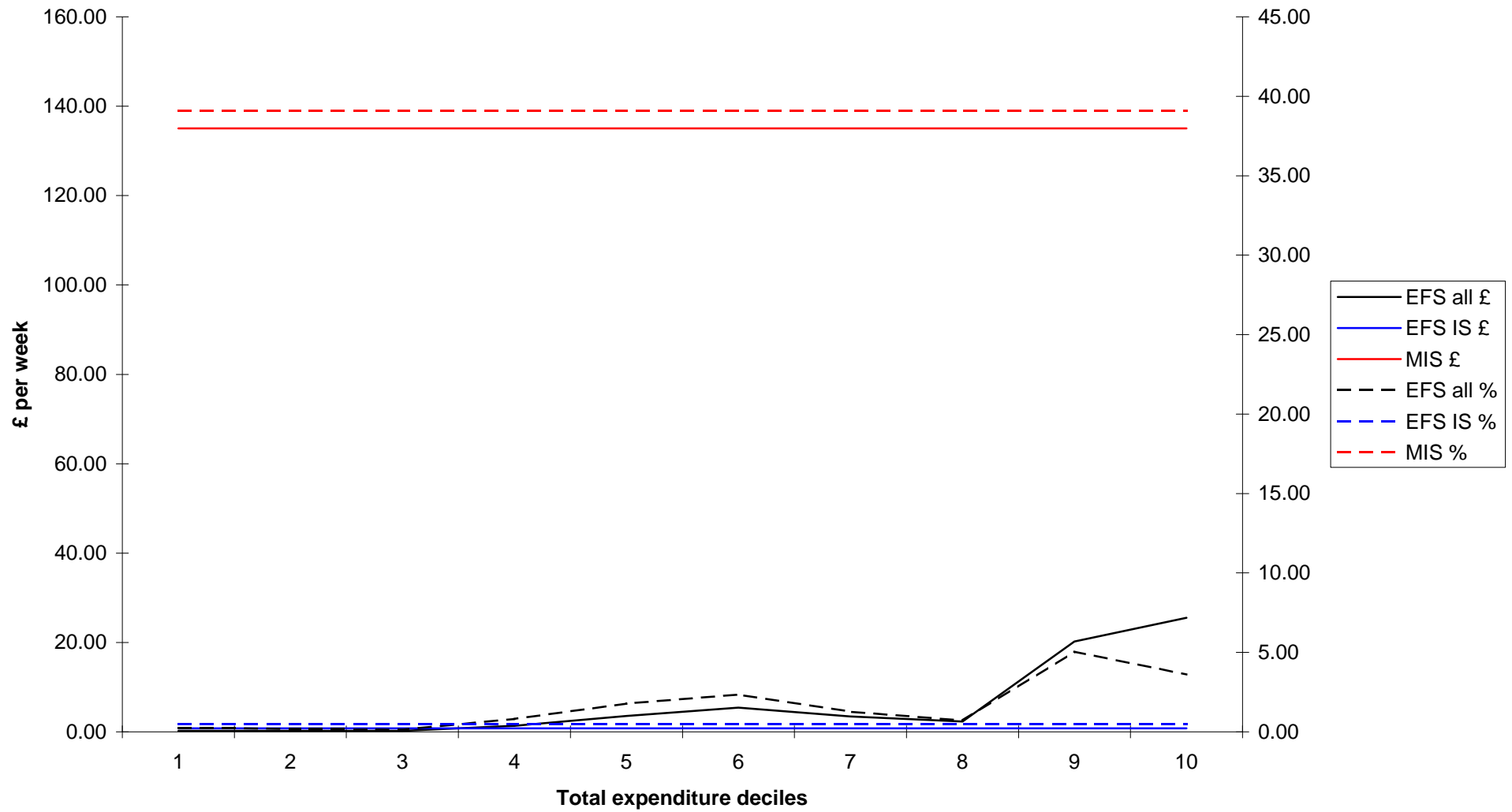
Comparison of MIS and EFS expenditure: other housing costs



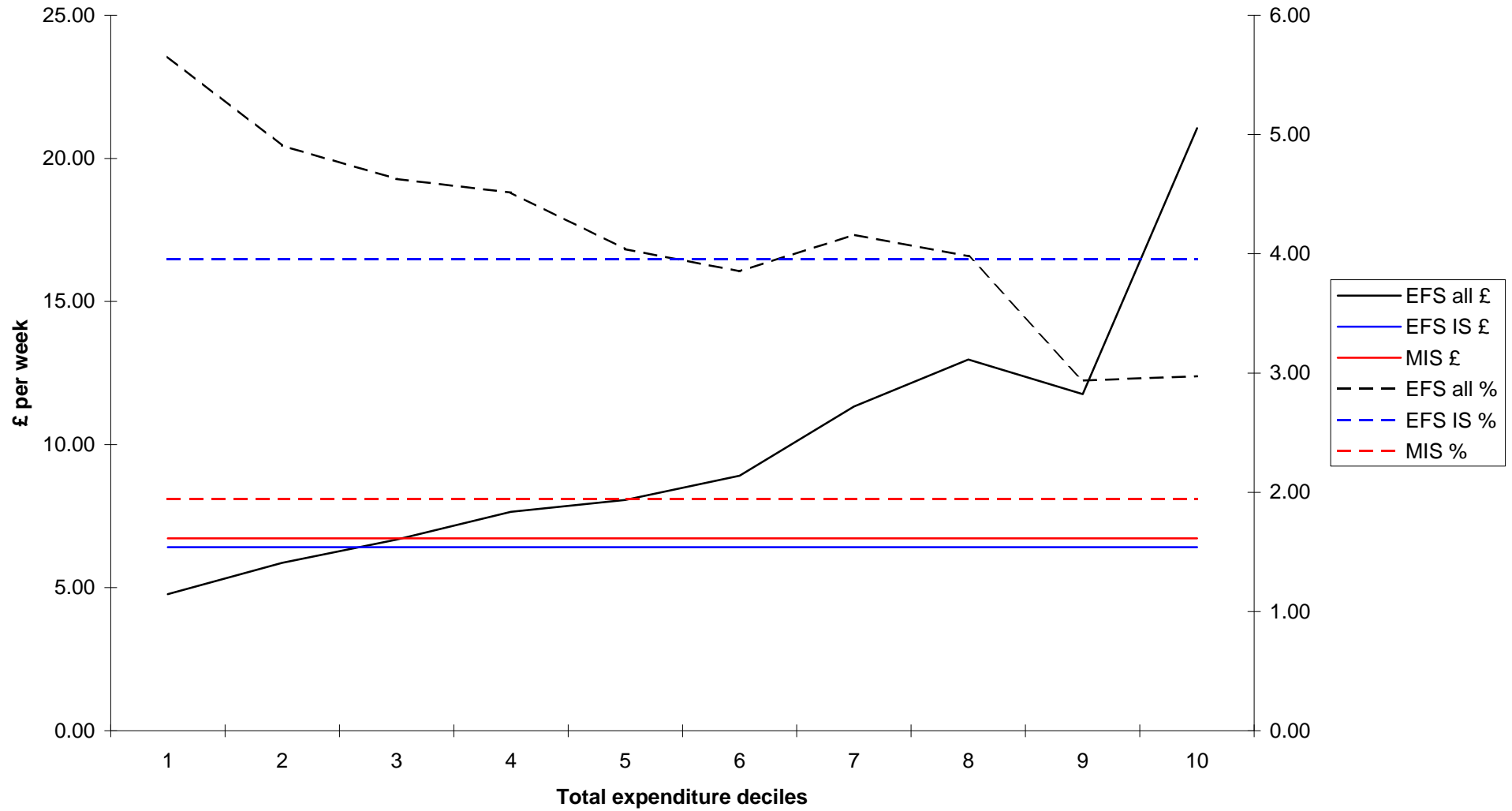
Comparison of MIS and EFS expenditure: household goods



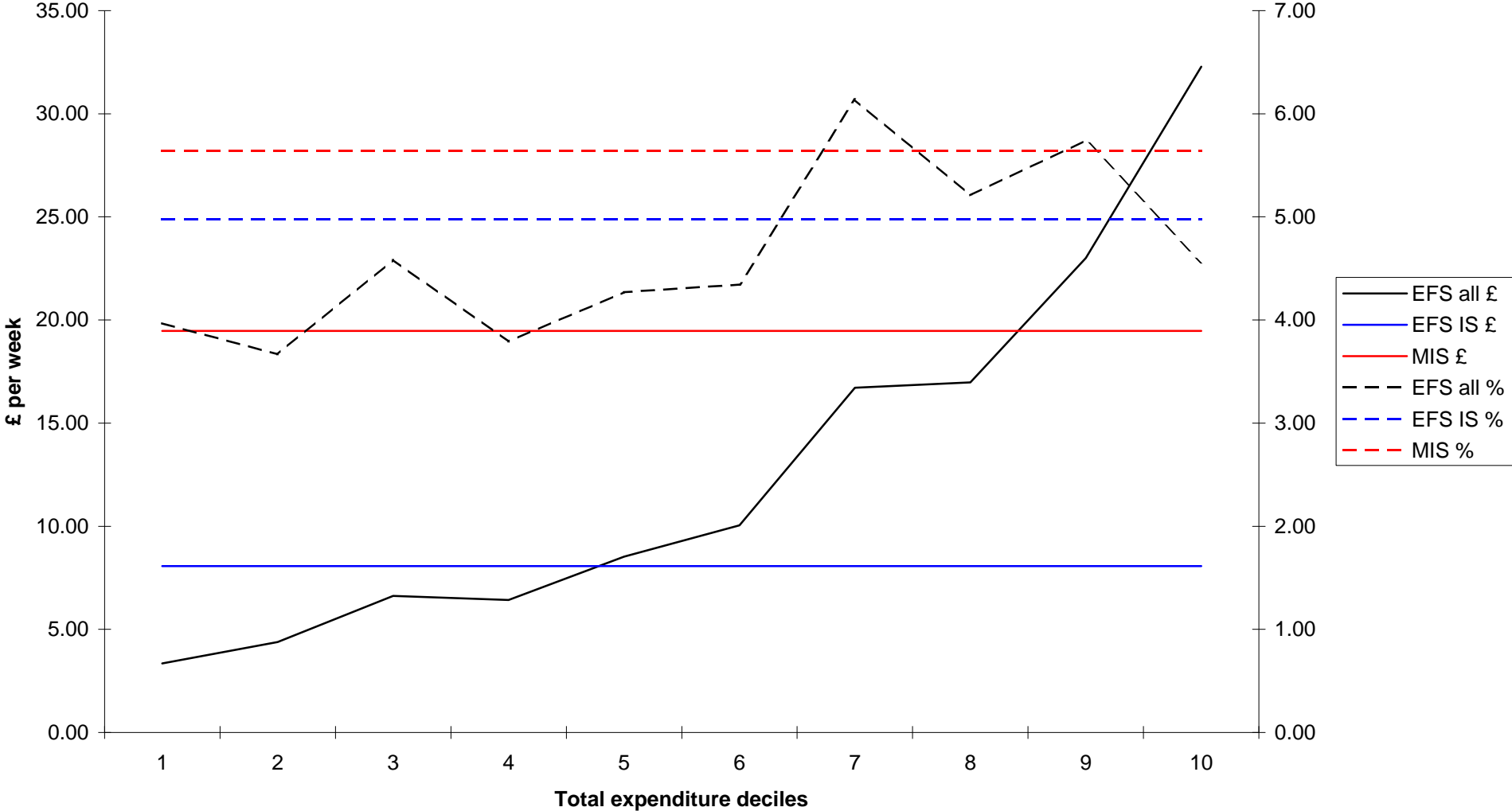
Comparison of MIS and EFS expenditure: childcare



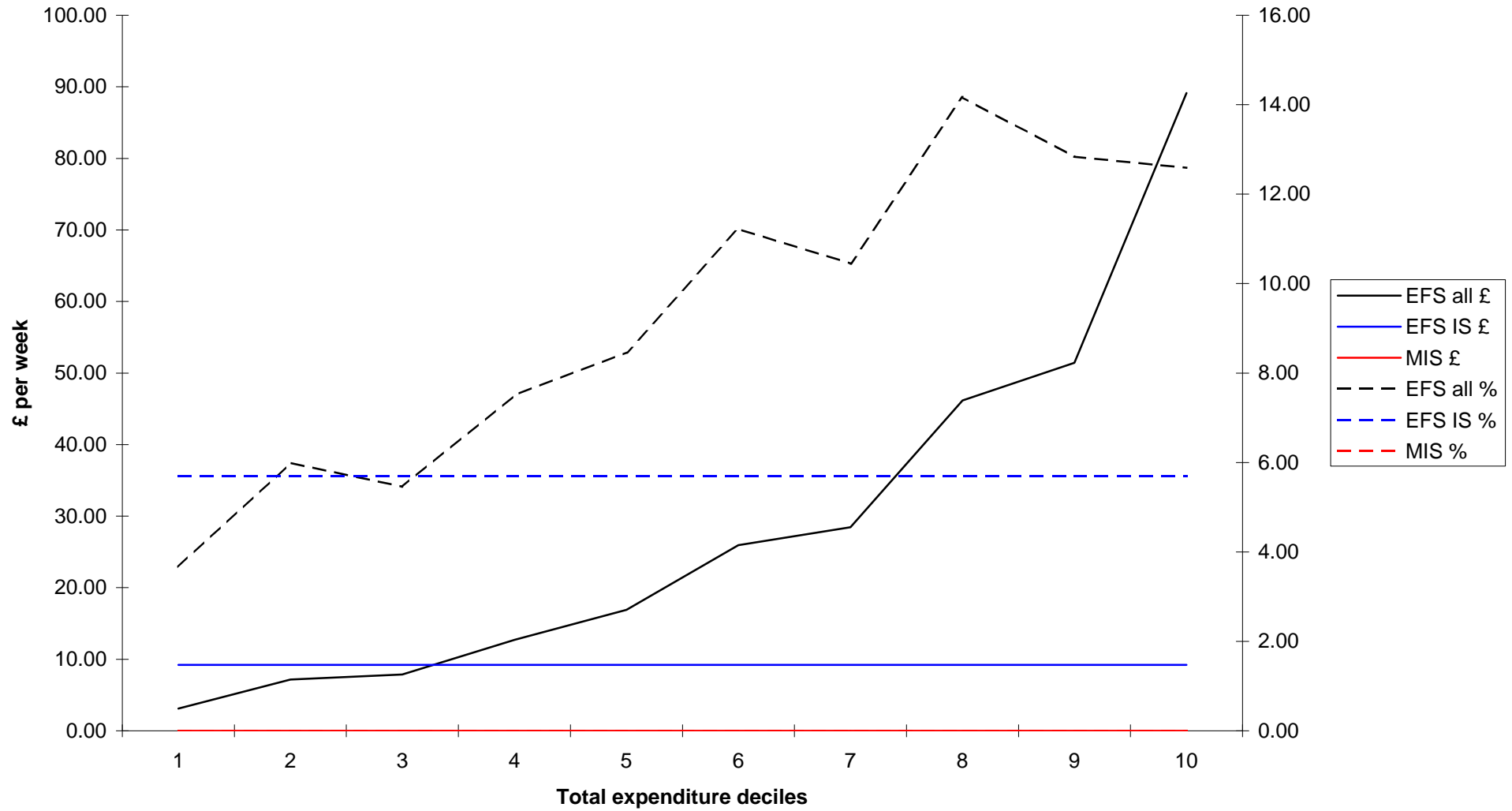
Comparison of MIS and EFS expenditure: household services



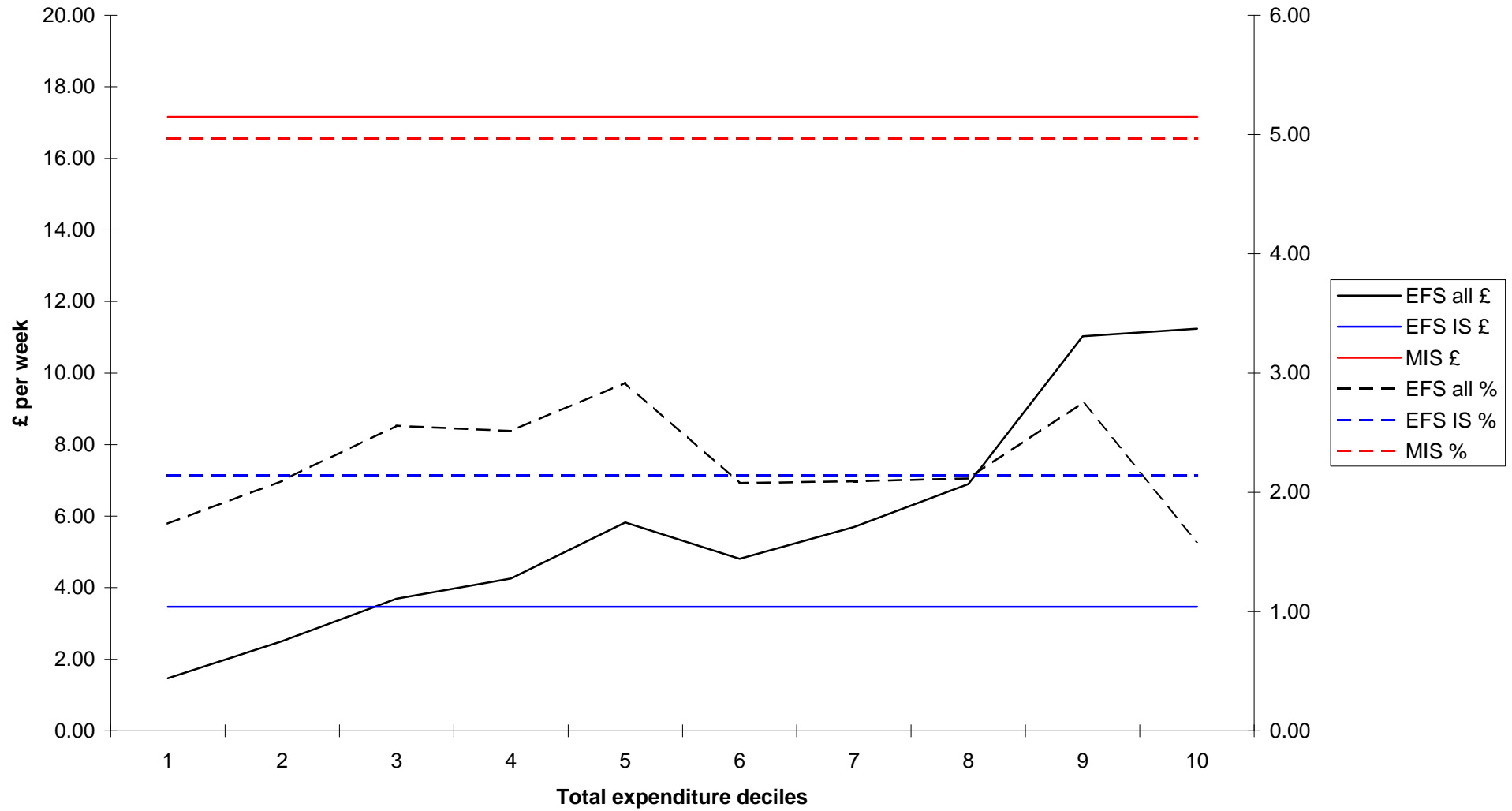
Comparison of MIS and EFS expenditure: personal goods and services



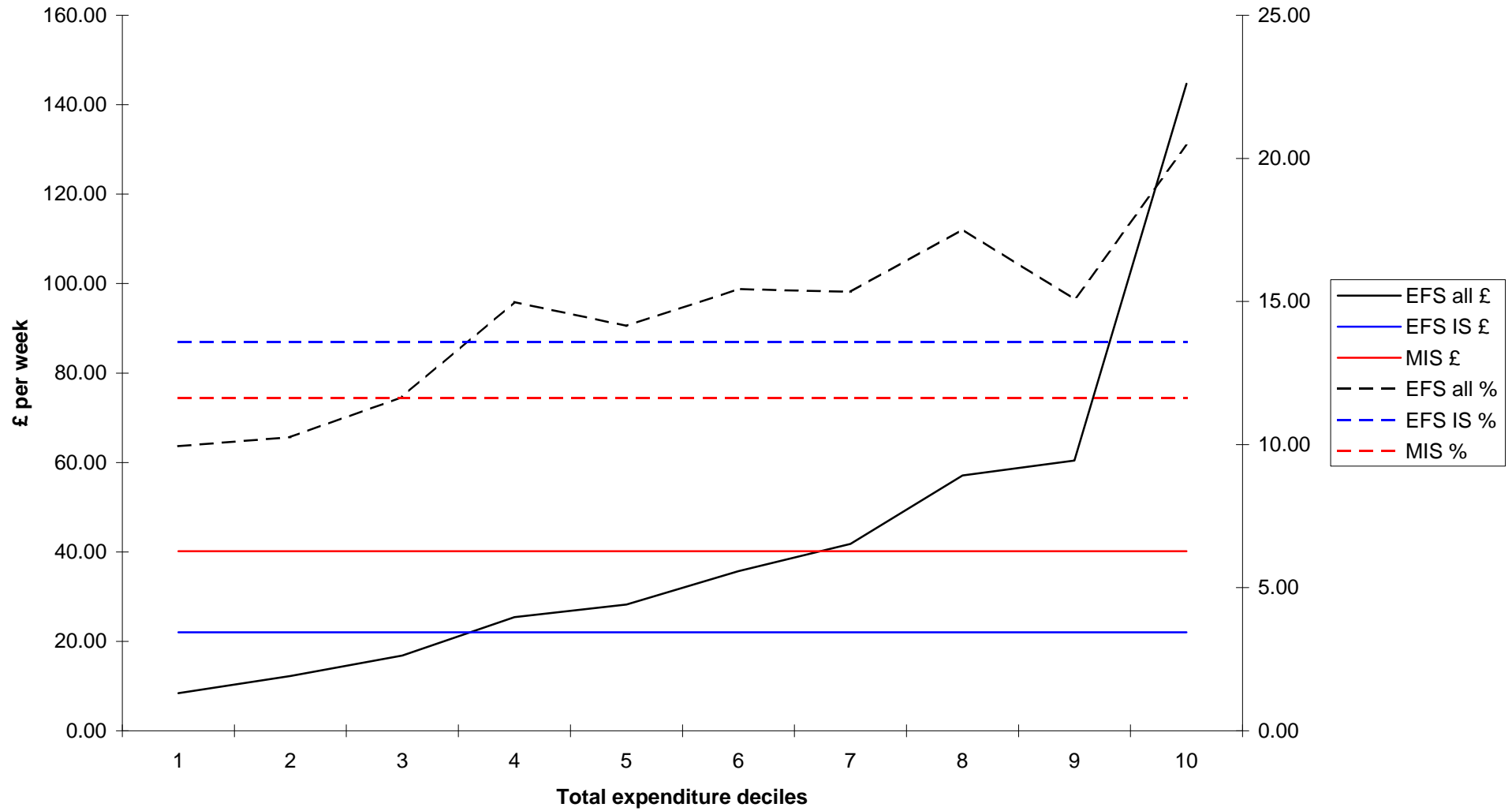
Comparison of MIS and EFS expenditure: motoring



Comparison of MIS and EFS expenditure: other travel costs



Comparison of MIS and EFS expenditure: leisure



Comparison of MIS and EFS expenditure: housing (not included in total budget)

