

Couple plus two	EFS ALL		EFS IS		EFS Social housing		MIS	
	Mean	%	Mean	%	Mean	%	£	%
Food	111.55	17.95	67.58	23.53	82.16	23.57	97.47	17.50
Alcohol	17.99	2.89	6.86	2.39	10.67	3.06	6.06	1.09
Tobacco	5.54	0.89	13.68	4.76	14.98	4.30	0.00	0.00
Clothing	31.61	5.09	18.60	6.48	21.48	6.16	29.26	5.25
Water rates	7.08	1.14	6.46	2.25	6.88	1.97	5.45	0.98
Council tax	24.35	3.92	18.14	6.32	18.86	5.41	20.73	3.72
Household insurances	8.39	1.35	1.81	0.63	1.61	0.46	2.23	0.40
Fuel	24.73	3.98	20.20	7.03	17.50	5.02	18.49	3.32
Other housing costs	58.96	9.49	10.11	3.52	7.26	2.08	7.26	1.30
Household goods	42.06	6.77	19.98	6.96	21.17	6.07	17.39	3.12
Childcare	11.40	1.83	0.10	0.03	0.40	0.11	186.98	33.57
Household services	15.22	2.45	8.78	3.06	11.65	3.34	13.21	2.37
Personal goods and services	27.24	4.38	11.44	3.98	13.57	3.89	27.39	4.92
Motoring	97.13	15.63	36.11	12.57	53.06	15.22	0.00	0.00
Other travel costs	13.08	2.10	5.55	1.93	7.62	2.19	35.02	6.29
Leisure	125.22	20.15	41.80	14.56	59.75	17.14	90.08	16.17
							0.00	
<b>Total</b>	<b>621.54</b>		<b>287.19</b>		<b>348.61</b>		<b>557.03</b>	
Rent/mortgage interest	122.31	19.68	92.84	32.33	78.83	22.61	69.40	12.46
Other excluded from budget	292.15		17.45		75.45		0.00	
unweighted base	3289		127		332			

### **Total weekly expenditure in each category**

Food	97.47
Alcohol	6.06
Tobacco	0.00
Clothing	29.26
Water rates	5.45
Council tax	20.73
Household insurances	2.23
Fuel	18.49
Other housing costs	7.26
Household goods	17.39
Childcare	186.98
Household services	13.21
Personal goods and services	27.39
Motoring	0.00
Other travel costs	35.02
Leisure	90.08
Total	557.03
Rent/mortgage interest	69.40
Other excluded from budget	

ALL

Report

Mean Rfood	Ralc	Rtob	Rclothes	Rwater	Rct	Rhsins	Rfuel	Rhsoth	Rhhgds	Rchild	Rhhser	Rper	Rcar	Rtrans	Rleisure	Rhousing	Rexcluded	total expenditure less housing costs
111.5506	17.99072	5.538734	31.60949	7.076374	24.34582	8.387204	24.73226	58.96391	42.05562	11.40234	15.21756	27.24498	97.12591	13.08177	125.217	122.3074	292.15118	621.5402857

IS

Report

Mean Rfood	Ralc	Rtob	Rclothes	Rwater	Rct	Rhsins	Rfuel	Rhsoth	Rhhgds	Rchild	Rhhser	Rper	Rcar	Rtrans	Rleisure	Rhousing	Rexcluded	total expenditure less housing costs
67.57617	6.863614	13.67933	18.59961	6.460652	18.14376	1.805683	20.20267	10.11095	19.98175	0.097388	8.777798	11.4382	36.10632	5.545719	41.80196	92.838	17.452063	287.1915812

SOCIAL HOUSING

Report

Mean Rfood	Ralc	Rtob	Rclothes	Rwater	Rct	Rhsins	Rfuel	Rhsoth	Rhhgds	Rchild	Rhhser	Rper	Rcar	Rtrans	Rleisure	Rhousing	Rexcluded	total expenditure less housing costs
82.16093	10.66965	14.97696	21.47632	6.880901	18.86349	1.610662	17.49939	7.260564	21.16976	0.397164	11.65068	13.56586	53.05952	7.618806	59.75021	78.8307	75.451777	348.6108527

All

12 category family type variable

		Frequency	Percent	Valid Percent	Cumulative Percent
Valid IS	couple parents, 2 children	3289	100	100	100

12 category family type variable

		Frequency	Percent	Valid Percent	Cumulative Percent
Valid social housing	couple parents, 2 children	127	100	100	100

12 category family type variable

		Frequency	Percent	Valid Percent	Cumulative Percent
Valid	couple parents, 2 children	332	100	100	100

Food

	EFS all £	EFS IS £	MIS £	EFS all %	EFS IS %	MIS %
1	58.74	67.58	97.47	27.75	23.53	17.50
2	83.67	67.58	97.47	26.68	23.53	17.50
3	93.34	67.58	97.47	24.82	23.53	17.50
4	99.90	67.58	97.47	22.86	23.53	17.50
5	109.47	67.58	97.47	22.08	23.53	17.50
6	112.90	67.58	97.47	20.12	23.53	17.50
7	125.67	67.58	97.47	19.73	23.53	17.50
8	129.26	67.58	97.47	17.30	23.53	17.50
9	143.40	67.58	97.47	15.78	23.53	17.50
10	159.36	67.58	97.47	10.46	23.53	17.50
total	111.55	67.58	97.47	17.95	23.53	17.50

Alcohol

	EFS all £	EFS IS £	MIS £	EFS all %	EFS IS %	MIS %
1	5.13	6.86	6.06	2.42	2.39	1.09
2	8.83	6.86	6.06	2.81	2.39	1.09
3	14.15	6.86	6.06	3.76	2.39	1.09
4	14.57	6.86	6.06	3.33	2.39	1.09
5	18.27	6.86	6.06	3.69	2.39	1.09
6	20.41	6.86	6.06	3.64	2.39	1.09
7	21.88	6.86	6.06	3.44	2.39	1.09
8	23.76	6.86	6.06	3.18	2.39	1.09
9	25.06	6.86	6.06	2.76	2.39	1.09
10	27.95	6.86	6.06	1.83	2.39	1.09
total	17.99	6.86	6.06	2.89	2.39	1.09

Tobacco

	EFS all £	EFS IS £	MIS £	EFS all %	EFS IS %	MIS %
1	5.68	13.68	0.00	2.68	4.76	0.00
2	7.21	13.68	0.00	2.30	4.76	0.00
3	7.15	13.68	0.00	1.90	4.76	0.00
4	5.56	13.68	0.00	1.27	4.76	0.00
5	6.29	13.68	0.00	1.27	4.76	0.00
6	6.43	13.68	0.00	1.14	4.76	0.00
7	5.21	13.68	0.00	0.82	4.76	0.00
8	4.48	13.68	0.00	0.60	4.76	0.00
9	4.12	13.68	0.00	0.45	4.76	0.00
10	3.25	13.68	0.00	0.21	4.76	0.00
total	5.54	13.68	0.00	0.89	4.76	0.00

Clothing

	EFS all £	EFS IS £	MIS £	EFS all %	EFS IS %	MIS %
1	9.88	18.60	29.26	4.67	6.48	5.25
2	16.83	18.60	29.26	5.37	6.48	5.25
3	20.07	18.60	29.26	5.34	6.48	5.25
4	26.18	18.60	29.26	5.99	6.48	5.25
5	30.23	18.60	29.26	6.10	6.48	5.25
6	31.65	18.60	29.26	5.64	6.48	5.25
7	35.27	18.60	29.26	5.54	6.48	5.25
8	36.07	18.60	29.26	4.83	6.48	5.25
9	47.67	18.60	29.26	5.25	6.48	5.25
10	62.33	18.60	29.26	4.09	6.48	5.25
total	31.61	18.60	29.26	5.09	6.48	5.25

Water rates

	EFS all £	EFS IS £	MIS £	EFS all %	EFS IS %	MIS %
1	6.40	6.46	5.45	3.03	2.25	0.98
2	6.41	6.46	5.45	2.05	2.25	0.98
3	6.72	6.46	5.45	1.79	2.25	0.98
4	6.54	6.46	5.45	1.50	2.25	0.98
5	7.25	6.46	5.45	1.46	2.25	0.98
6	6.79	6.46	5.45	1.21	2.25	0.98
7	7.14	6.46	5.45	1.12	2.25	0.98
8	7.39	6.46	5.45	0.99	2.25	0.98
9	8.06	6.46	5.45	0.89	2.25	0.98
10	8.03	6.46	5.45	0.53	2.25	0.98
total	7.08	6.46	5.45	1.14	2.25	0.98

Council tax

	EFS all £	EFS IS £	MIS £	EFS all %	EFS IS %	MIS %
1	19.41	18.14	20.73	9.17	6.32	3.72
2	21.31	18.14	20.73	6.80	6.32	3.72
3	21.93	18.14	20.73	5.83	6.32	3.72
4	22.32	18.14	20.73	5.11	6.32	3.72
5	23.24	18.14	20.73	4.69	6.32	3.72
6	24.00	18.14	20.73	4.28	6.32	3.72
7	25.66	18.14	20.73	4.03	6.32	3.72
8	26.88	18.14	20.73	3.60	6.32	3.72
9	28.19	18.14	20.73	3.10	6.32	3.72
10	30.47	18.14	20.73	2.00	6.32	3.72
total	24.35	18.14	20.73	3.92	6.32	3.72

Household insurances

	EFS all £	EFS IS £	MIS £	EFS all %	EFS IS %	MIS %
1	3.64	1.81	2.23	1.72	0.63	0.40
2	5.52	1.81	2.23	1.76	0.63	0.40
3	6.66	1.81	2.23	1.77	0.63	0.40
4	7.19	1.81	2.23	1.64	0.63	0.40
5	7.73	1.81	2.23	1.56	0.63	0.40
6	8.46	1.81	2.23	1.51	0.63	0.40
7	9.38	1.81	2.23	1.47	0.63	0.40
8	9.58	1.81	2.23	1.28	0.63	0.40
9	12.30	1.81	2.23	1.35	0.63	0.40
10	13.42	1.81	2.23	0.88	0.63	0.40
total	8.39	1.81	2.23	1.35	0.63	0.40

Fuel

	EFS all £	EFS IS £	MIS £	EFS all %	EFS IS %	MIS %
1	17.00	20.20	18.49	8.03	7.03	3.32
2	21.08	20.20	18.49	6.72	7.03	3.32
3	22.37	20.20	18.49	5.95	7.03	3.32
4	21.99	20.20	18.49	5.03	7.03	3.32
5	24.91	20.20	18.49	5.02	7.03	3.32
6	24.71	20.20	18.49	4.40	7.03	3.32
7	25.09	20.20	18.49	3.94	7.03	3.32
8	26.49	20.20	18.49	3.54	7.03	3.32
9	29.63	20.20	18.49	3.26	7.03	3.32
10	34.01	20.20	18.49	2.23	7.03	3.32
total	24.73	20.20	18.49	3.98	7.03	3.32

Other housing costs						
	EFS all £	EFS IS £	MIS £	EFS all %	EFS IS %	MIS %
1	3.03	10.11	7.26	1.43	3.52	1.30
2	6.94	10.11	7.26	2.21	3.52	1.30
3	11.03	10.11	7.26	2.93	3.52	1.30
4	18.82	10.11	7.26	4.31	3.52	1.30
5	19.67	10.11	7.26	3.97	3.52	1.30
6	30.70	10.11	7.26	5.47	3.52	1.30
7	42.72	10.11	7.26	6.71	3.52	1.30
8	57.39	10.11	7.26	7.68	3.52	1.30
9	90.45	10.11	7.26	9.95	3.52	1.30
10	307.46	10.11	7.26	20.18	3.52	1.30
total	58.96	10.11	7.26	9.49	3.52	1.30

Household goods						
	EFS all £	EFS IS £	MIS £	EFS all %	EFS IS %	MIS %
1	9.16	19.98	17.39	4.33	6.96	3.12
2	15.31	19.98	17.39	4.88	6.96	3.12
3	21.66	19.98	17.39	5.76	6.96	3.12
4	24.54	19.98	17.39	5.62	6.96	3.12
5	28.79	19.98	17.39	5.81	6.96	3.12
6	37.77	19.98	17.39	6.73	6.96	3.12
7	38.87	19.98	17.39	6.10	6.96	3.12
8	53.59	19.98	17.39	7.17	6.96	3.12
9	64.69	19.98	17.39	7.12	6.96	3.12
10	125.77	19.98	17.39	8.25	6.96	3.12
total						

Childcare						
	EFS all £	EFS IS £	MIS £	EFS all %	EFS IS %	MIS %
1	0.44	0.10	186.98	0.21	0.03	33.57
2	1.72	0.10	186.98	0.55	0.03	33.57
3	1.53	0.10	186.98	0.41	0.03	33.57
4	4.16	0.10	186.98	0.95	0.03	33.57
5	6.17	0.10	186.98	1.24	0.03	33.57
6	10.76	0.10	186.98	1.92	0.03	33.57
7	14.59	0.10	186.98	2.29	0.03	33.57
8	11.84	0.10	186.98	1.58	0.03	33.57
9	21.72	0.10	186.98	2.39	0.03	33.57
10	40.88	0.10	186.98	2.68	0.03	33.57
total	11.40	0.10	186.98	1.83	0.03	33.57

Household services						
	EFS all £	EFS IS £	MIS £	EFS all %	EFS IS %	MIS %
1	8.44	8.78	13.21	3.99	3.06	2.37
2	10.42	8.78	13.21	3.32	3.06	2.37
3	11.25	8.78	13.21	2.99	3.06	2.37
4	12.53	8.78	13.21	2.87	3.06	2.37
5	13.81	8.78	13.21	2.79	3.06	2.37
6	14.47	8.78	13.21	2.58	3.06	2.37
7	14.66	8.78	13.21	2.30	3.06	2.37
8	16.76	8.78	13.21	2.24	3.06	2.37
9	19.44	8.78	13.21	2.14	3.06	2.37
10	30.35	8.78	13.21	1.99	3.06	2.37
total	15.22	8.78	13.21	2.45	3.06	2.37

Personal goods and services

	EFS all £	EFS IS £	MIS £	EFS all %	EFS IS %	MIS %
1	7.44	11.44	27.39	3.52	3.98	4.92
2	13.24	11.44	27.39	4.22	3.98	4.92
3	17.37	11.44	27.39	4.62	3.98	4.92
4	20.92	11.44	27.39	4.79	3.98	4.92
5	25.80	11.44	27.39	5.20	3.98	4.92
6	24.56	11.44	27.39	4.38	3.98	4.92
7	27.80	11.44	27.39	4.36	3.98	4.92
8	36.44	11.44	27.39	4.88	3.98	4.92
9	43.57	11.44	27.39	4.79	3.98	4.92
10	55.29	11.44	27.39	3.63	3.98	4.92
total	27.24	11.44	27.39	4.38	3.98	4.92

Motoring

	EFS all £	EFS IS £	MIS £	EFS all %	EFS IS %	MIS %
1	26.78	36.11	0.00	12.65	12.57	0.00
2	45.13	36.11	0.00	14.39	12.57	0.00
3	57.35	36.11	0.00	15.25	12.57	0.00
4	69.33	36.11	0.00	15.86	12.57	0.00
5	78.01	36.11	0.00	15.74	12.57	0.00
6	98.94	36.11	0.00	17.63	12.57	0.00
7	103.21	36.11	0.00	16.21	12.57	0.00
8	130.91	36.11	0.00	17.52	12.57	0.00
9	140.01	36.11	0.00	15.41	12.57	0.00
10	221.40	36.11	0.00	14.53	12.57	0.00
total	97.13	36.11	0.00	15.63	12.57	0.00

Other travel costs

	EFS all £	EFS IS £	MIS £	EFS all %	EFS IS %	MIS %
1	3.50	5.55	35.02	1.65	1.93	6.29
2	5.75	5.55	35.02	1.83	1.93	6.29
3	4.54	5.55	35.02	1.21	1.93	6.29
4	7.86	5.55	35.02	1.80	1.93	6.29
5	7.89	5.55	35.02	1.59	1.93	6.29
6	8.29	5.55	35.02	1.48	1.93	6.29
7	12.59	5.55	35.02	1.98	1.93	6.29
8	13.10	5.55	35.02	1.75	1.93	6.29
9	19.40	5.55	35.02	2.14	1.93	6.29
10	47.74	5.55	35.02	3.13	1.93	6.29
total	13.08	5.55	35.02	2.10	1.93	6.29

Leisure

	EFS all £	EFS IS £	MIS £	EFS all %	EFS IS %	MIS %
1	26.99	41.80	90.08	12.75	14.56	16.17
2	44.27	41.80	90.08	14.12	14.56	16.17
3	58.97	41.80	90.08	15.68	14.56	16.17
4	74.59	41.80	90.08	17.07	14.56	16.17
5	88.19	41.80	90.08	17.79	14.56	16.17
6	100.40	41.80	90.08	17.89	14.56	16.17
7	127.10	41.80	90.08	19.96	14.56	16.17
8	163.40	41.80	90.08	21.86	14.56	16.17
9	211.01	41.80	90.08	23.22	14.56	16.17
10	355.96	41.80	90.08	23.36	14.56	16.17
total	125.22	41.80	90.08	20.15	14.56	16.17

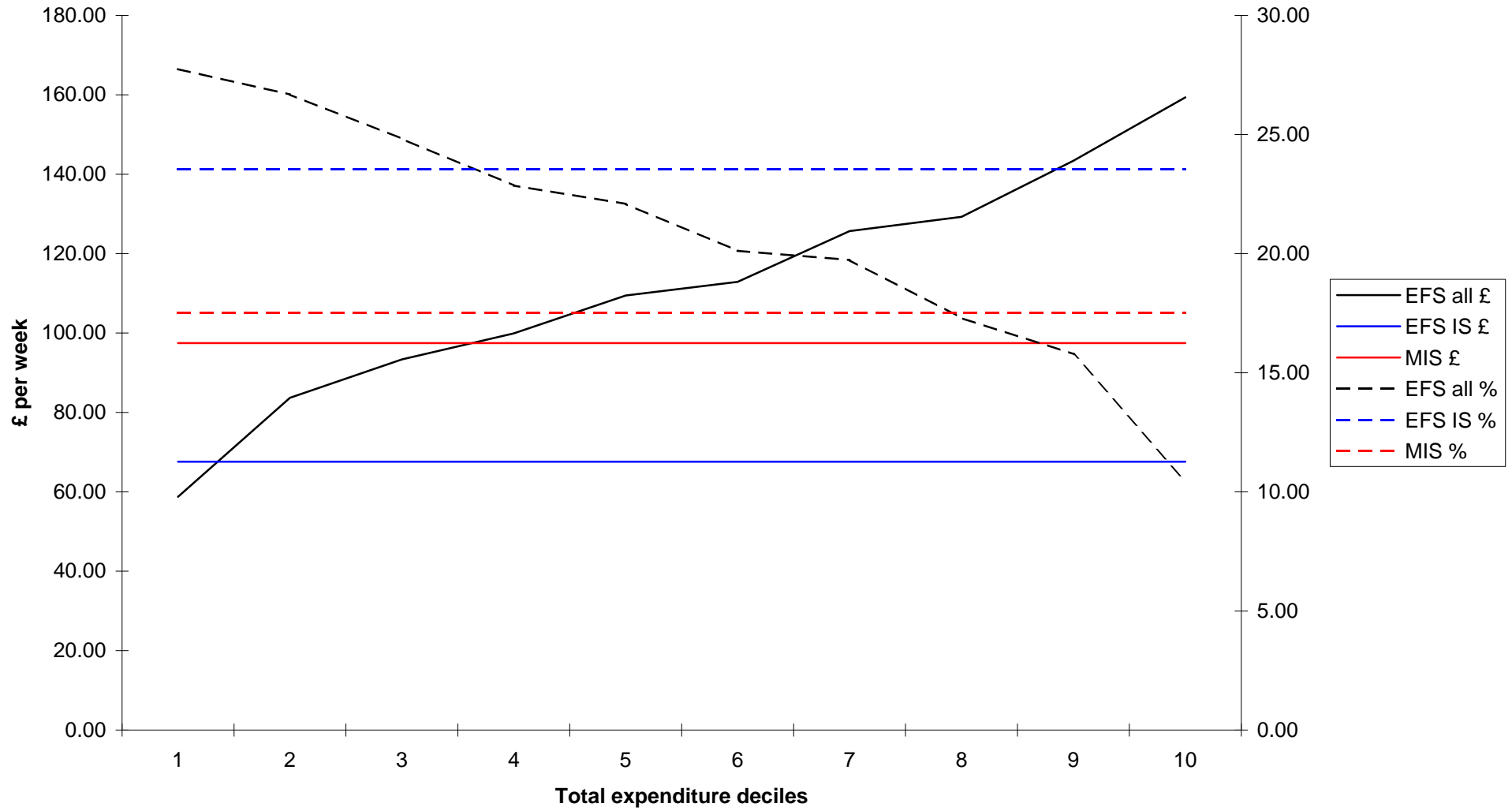
Rent/mortgage interest

	EFS all £	EFS IS £	MIS £	EFS all %	EFS IS %	MIS %
1	93.34	92.84	69.40	44.10	32.33	12.46
2	91.98	92.84	69.40	29.33	32.33	12.46
3	97.02	92.84	69.40	25.80	32.33	12.46
4	108.09	92.84	69.40	24.74	32.33	12.46
5	114.78	92.84	69.40	23.16	32.33	12.46
6	112.07	92.84	69.40	19.97	32.33	12.46
7	121.31	92.84	69.40	19.05	32.33	12.46
8	147.25	92.84	69.40	19.70	32.33	12.46
9	155.31	92.84	69.40	17.09	32.33	12.46
10	181.69	92.84	69.40	11.92	32.33	12.46
total	122.31	92.84	69.40	19.68	32.33	12.46

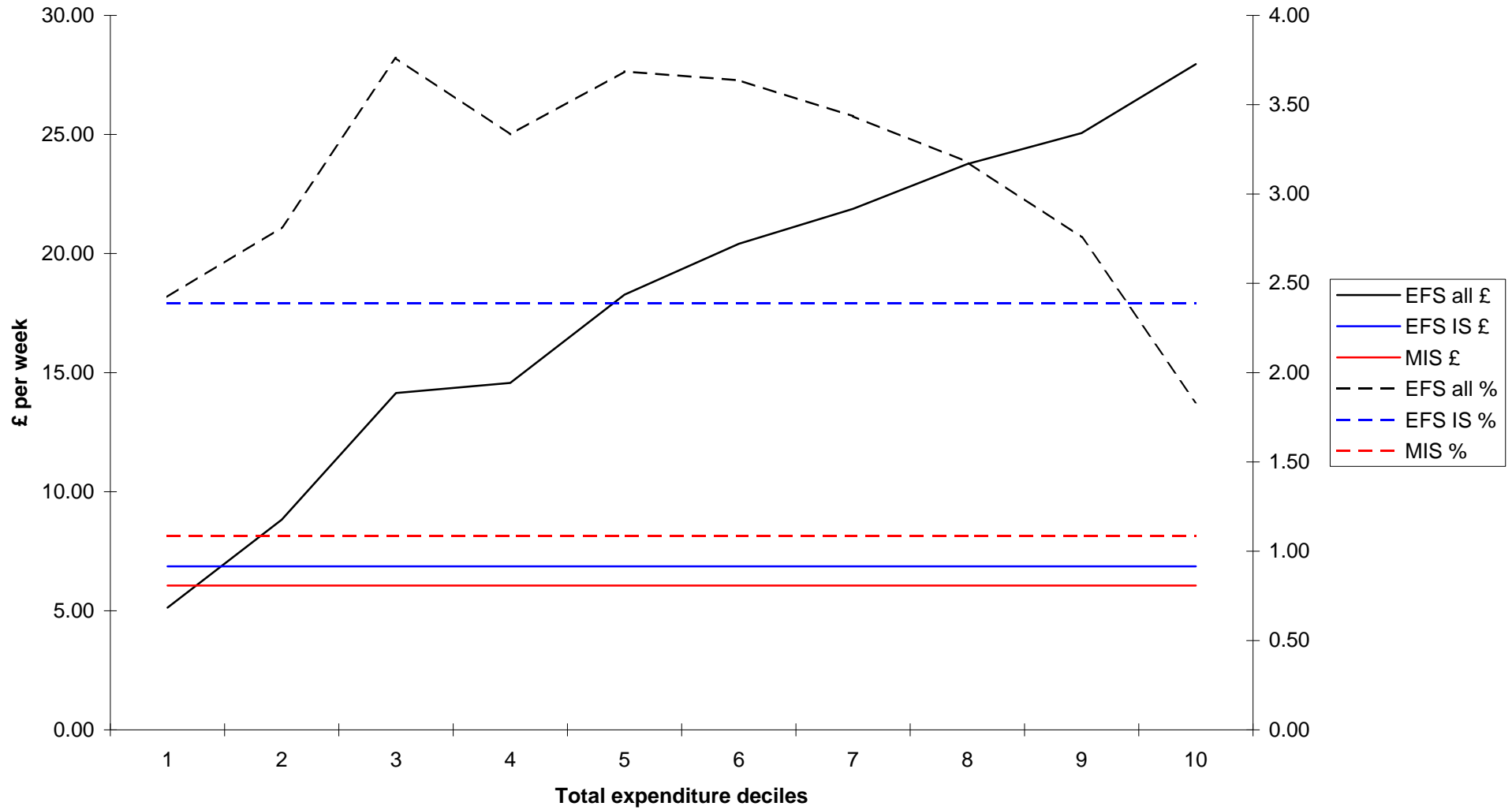
Report

Mean	Rfood	Ralc	Rtob	Rclothes	Rwater	Rct	Rhsins	Rfuel	Rsoth	Rhhgds	Rchild	Rhhser	Rper	Rcar	Rtrans	Rleisure	Rhousing	Rexcluded	total expenditure less housing costs
1	58.73718	5.132582	5.676513	9.881746	6.404968	19.4119	3.640605	17.0036	3.026228	9.155064	0.442238	8.442415	7.440847	26.78386	3.496562	26.99346	93.33925	86.698679	211.6697769
2	83.67344	8.826403	7.206434	16.82713	6.414046	21.31466	5.519542	21.07867	6.936708	15.31006	1.721388	10.41867	13.23788	45.13252	5.749484	44.27113	91.98464	135.82481	313.6381758
3	93.34455	14.1454	7.152486	20.06658	6.71587	21.93085	6.658039	22.37191	11.03093	21.66425	1.531383	11.25039	17.37247	57.35068	4.541945	58.96642	97.01759	174.928	376.0941453
4	99.89966	14.56805	5.556906	26.18436	6.537585	22.32196	7.185433	21.989	18.82196	24.54032	4.163555	12.53307	20.91784	69.32616	7.857136	74.59295	108.0945	218.90312	436.9959472
5	109.4659	18.2729	6.29432	30.22745	7.251579	23.2422	7.730404	24.90556	19.66957	28.78524	6.168528	13.80696	25.79766	78.00532	7.89242	88.19188	114.7837	243.66435	495.7079445
6	112.8968	20.40843	6.425213	31.65472	6.794578	23.99919	8.455787	24.70823	30.70398	37.76817	10.76244	14.47084	24.56015	98.9384	8.285299	100.3995	112.0677	282.82241	561.2317649
7	125.6704	21.87675	5.206032	35.27244	7.140334	25.66209	9.382854	25.08781	42.71714	38.87161	14.58514	14.66359	27.79734	103.2065	12.58631	127.0996	121.3139	306.18407	636.8258687
8	129.2562	23.76054	4.481819	36.0687	7.391817	26.87552	9.577448	26.4924	57.38674	53.58735	11.84465	16.76323	36.4394	130.9074	13.09609	163.4013	147.2469	379.91787	747.3306373
9	143.4021	25.05679	4.118998	47.66727	8.063882	28.19197	12.30033	29.63483	90.45281	64.6891	21.71892	19.44112	43.57371	140.007	19.40379	211.0098	155.3138	418.41403	908.7324436
10	159.3571	27.95173	3.252448	62.33469	8.031714	30.46965	13.42456	34.01022	307.4553	125.7727	40.88315	30.35169	55.29154	221.3956	47.73736	355.9585	181.6948	673.96819	1523.678057
Total	111.5506	17.99072	5.538734	31.60949	7.076374	24.34582	8.387204	24.73226	58.96391	42.05562	11.40234	15.21756	27.24498	97.12591	13.08177	125.217	122.3074	292.15118	621.5402857

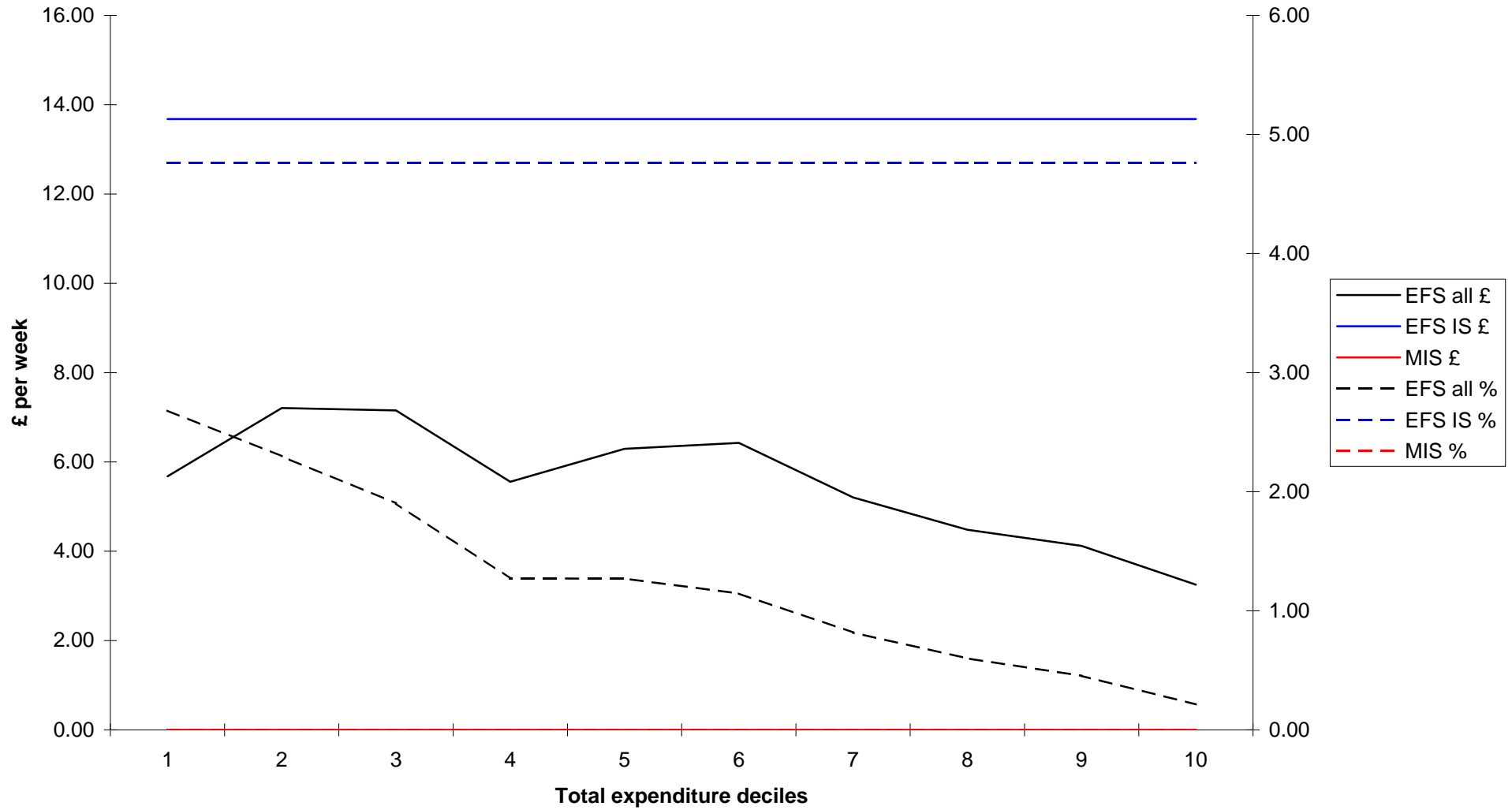
### Comparison of MIS and EFS expenditure: food



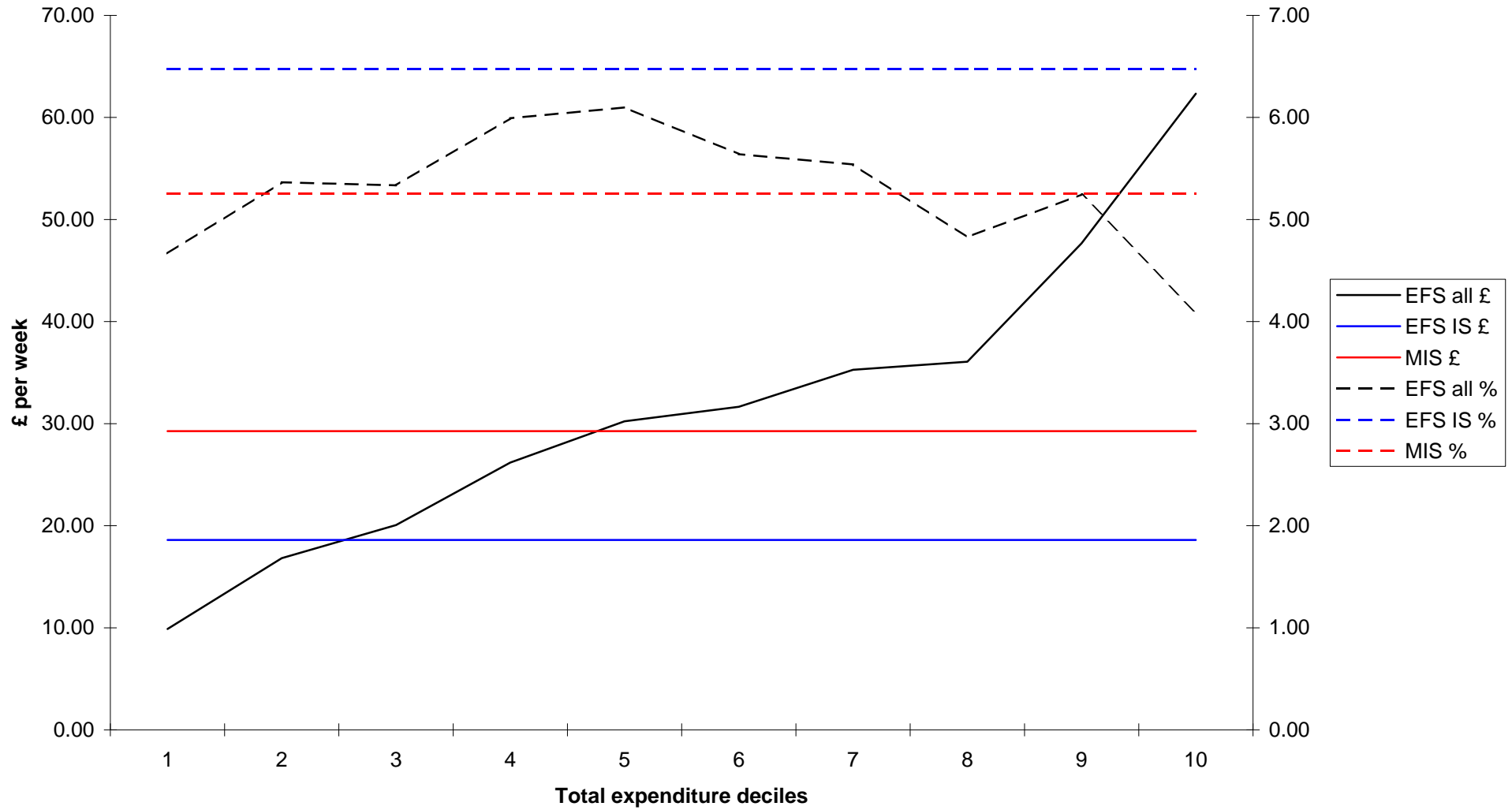
### Comparison of MIS and EFS expenditure: alcohol



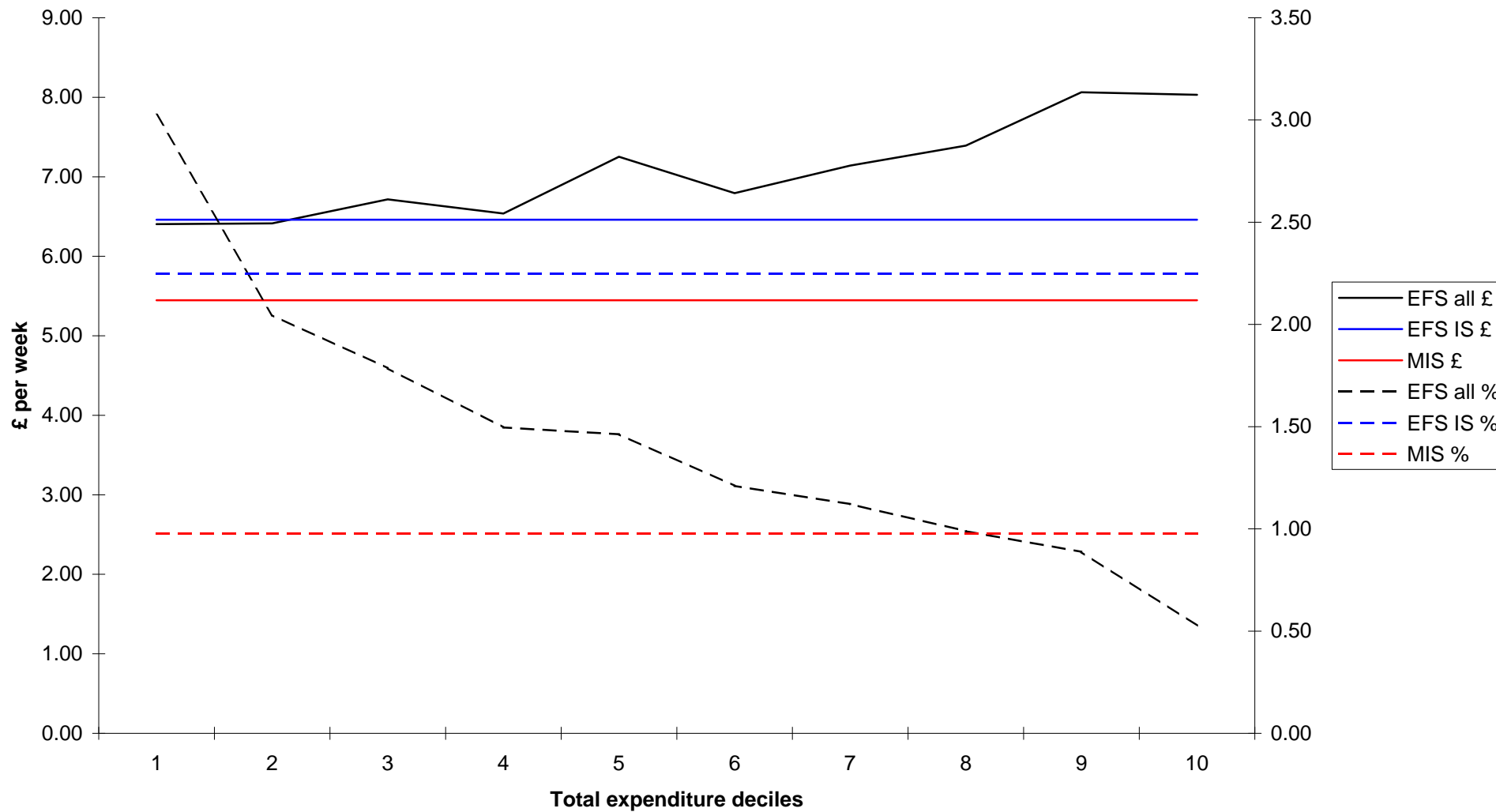
### Comparison of MIS and EFS expenditure: tobacco



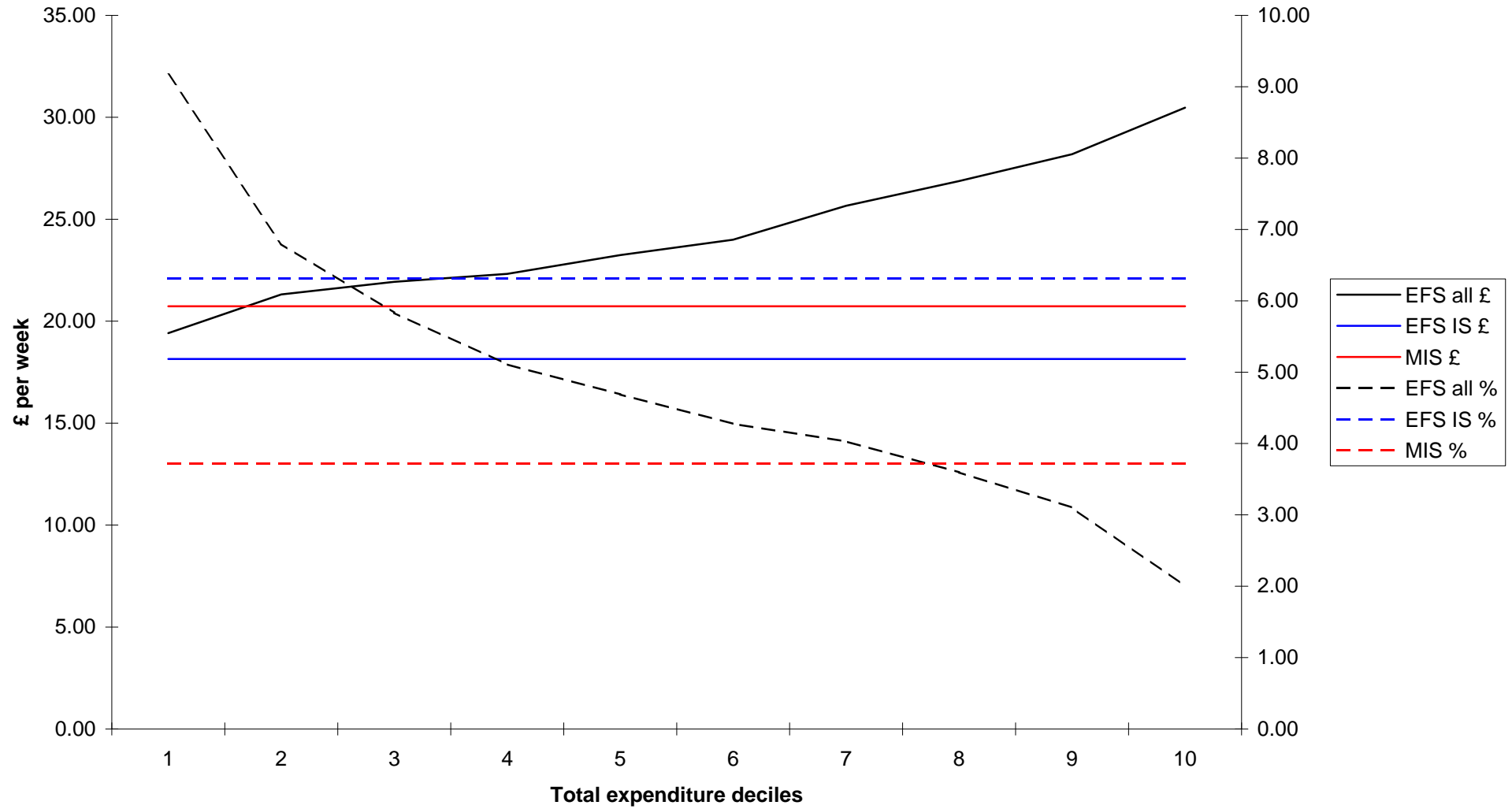
### Comparison of MIS and EFS expenditure: clothing



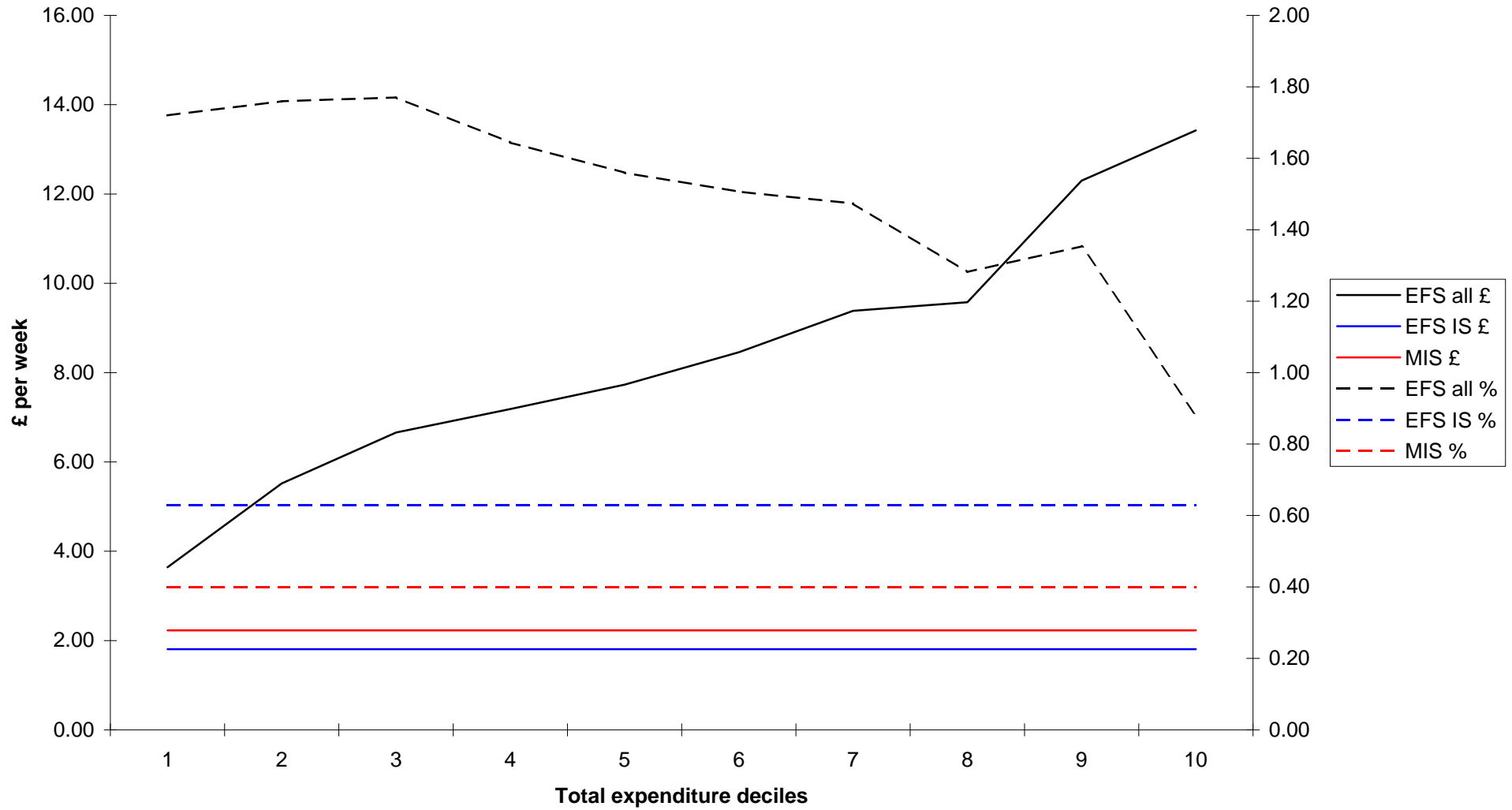
### Comparison of MIS and EFS expenditure: water rates



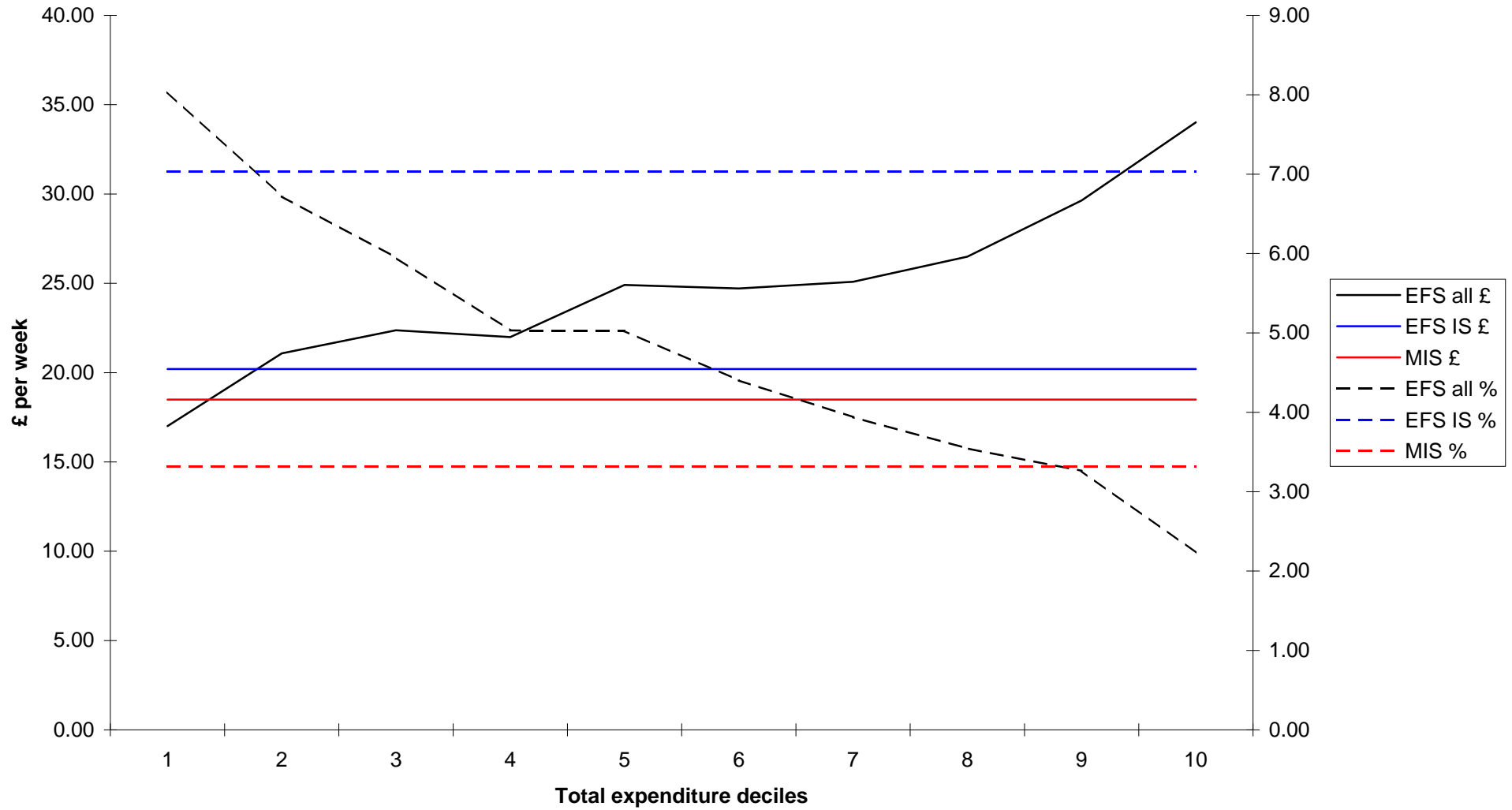
### Comparison of MIS and EFS expenditure: council tax



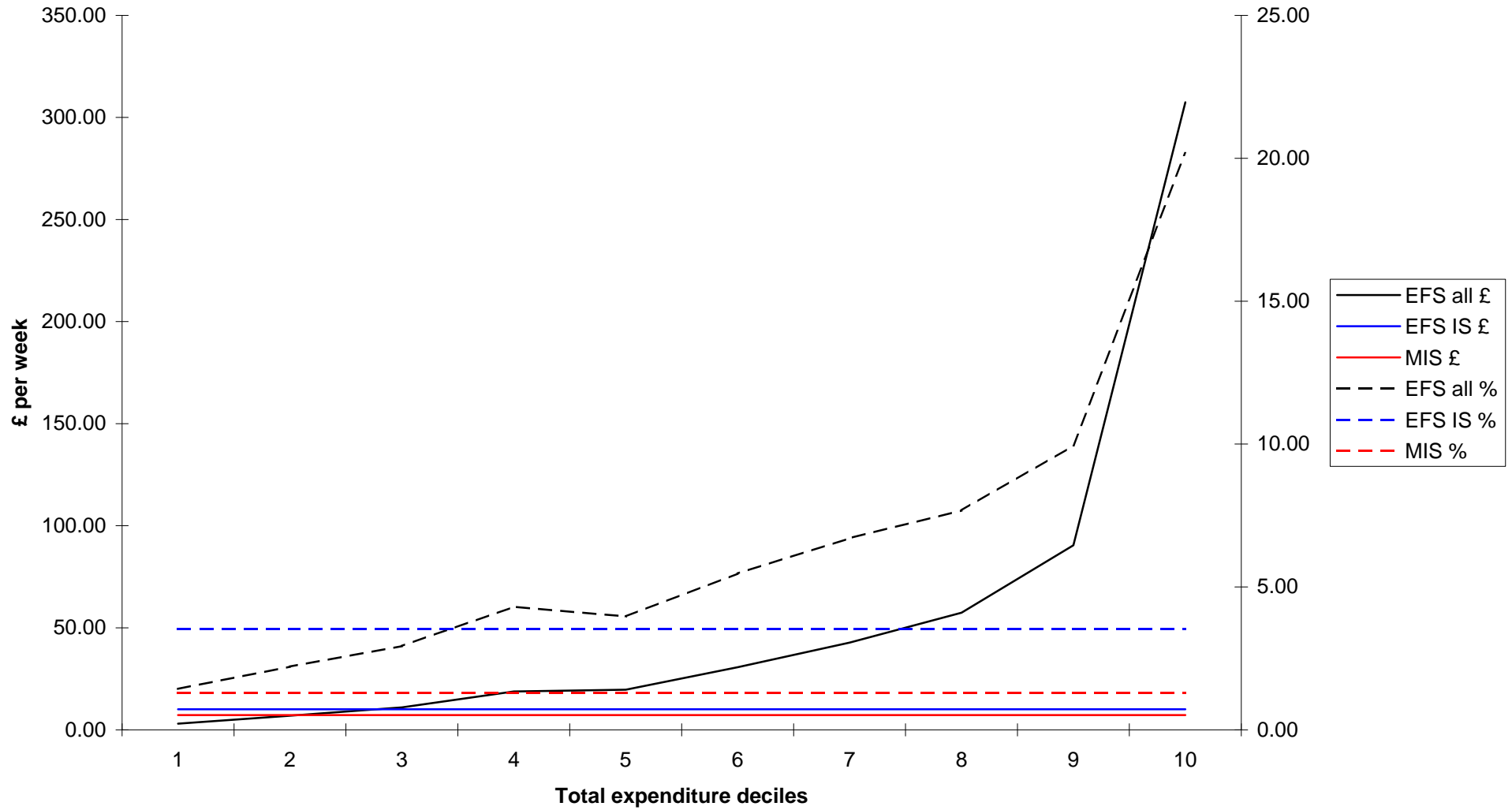
### Comparison of MIS and EFS expenditure: household insurances



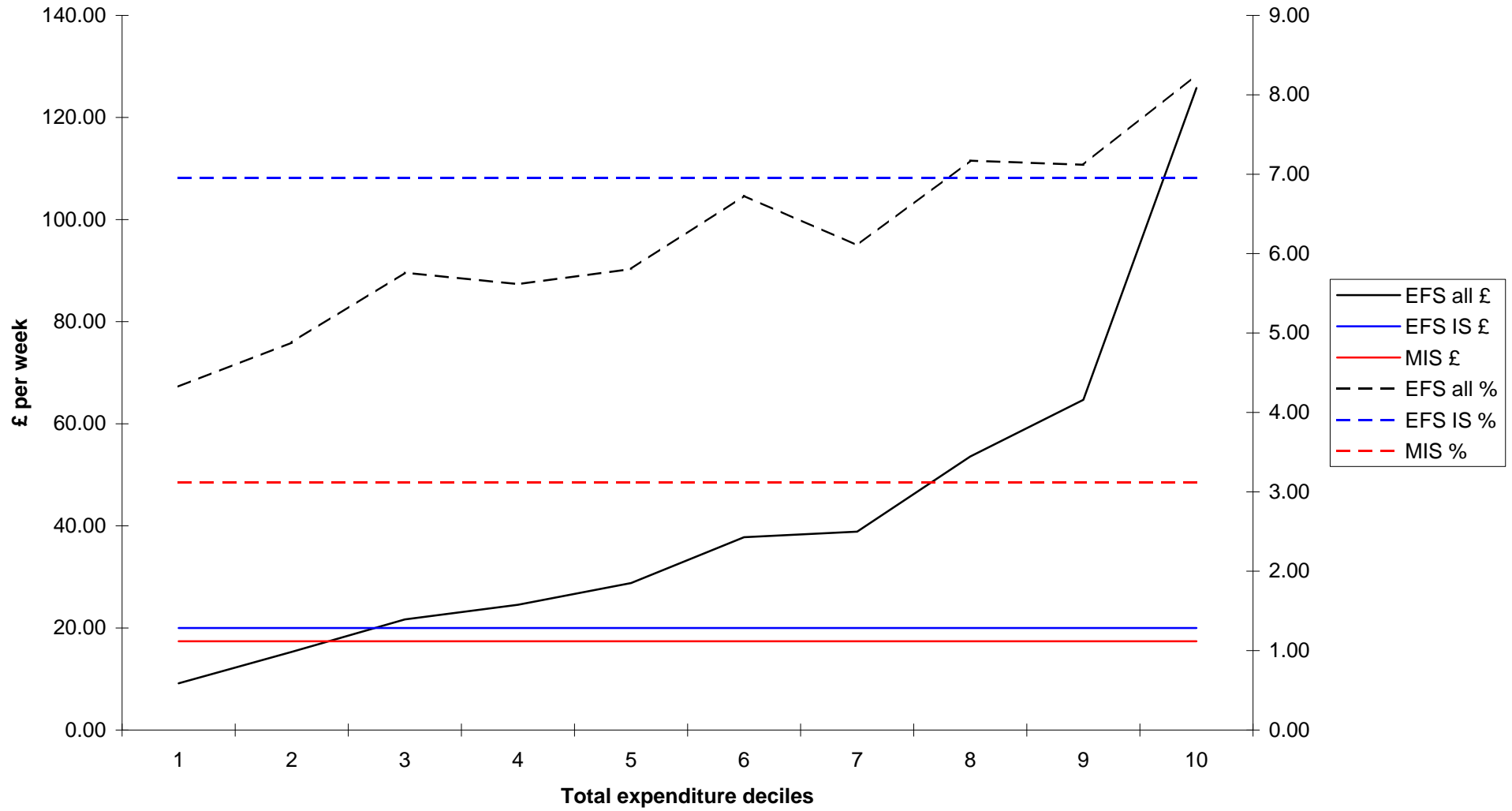
### Comparison of MIS and EFS expenditure: fuel



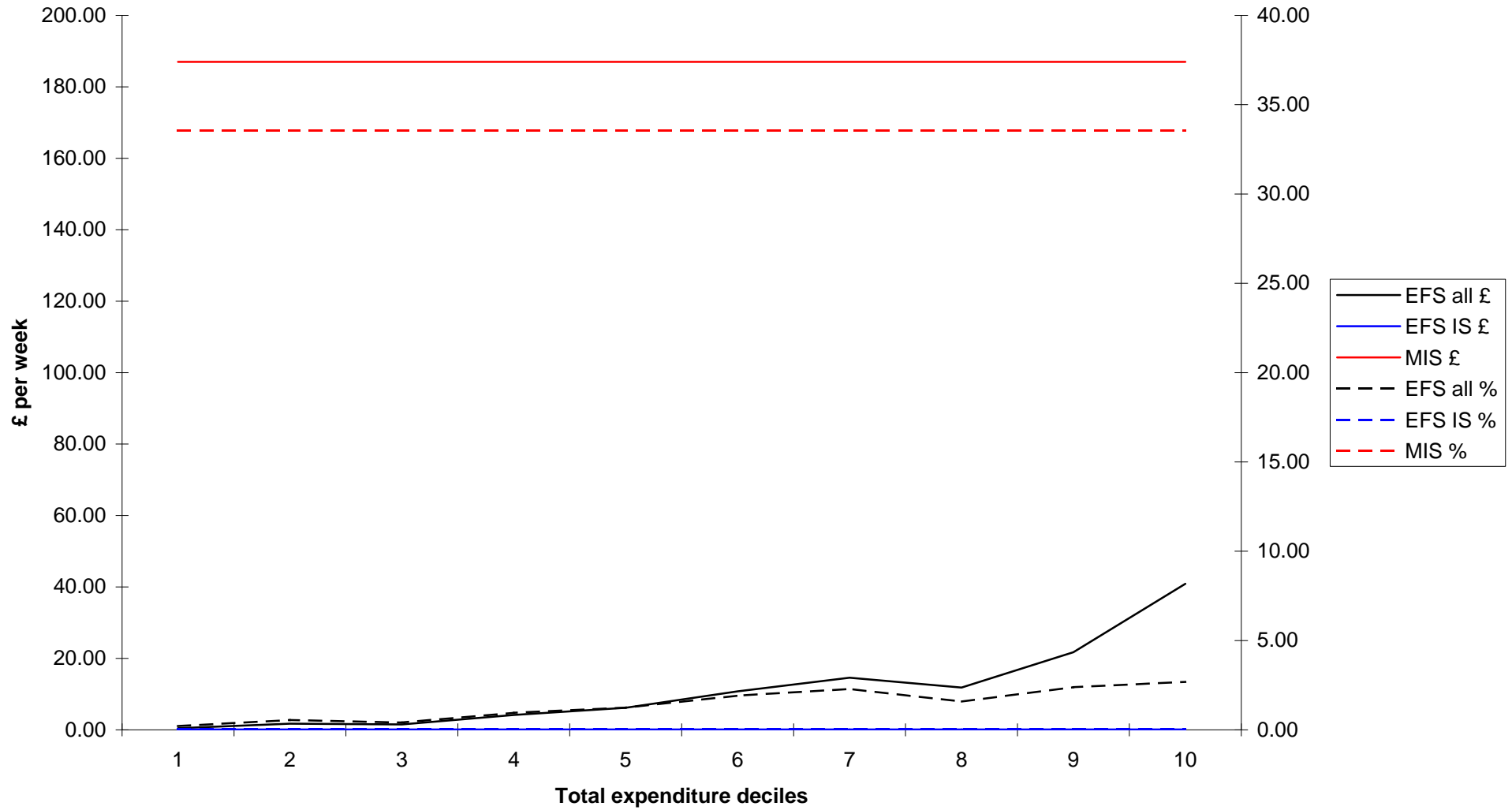
### Comparison of MIS and EFS expenditure: other housing costs



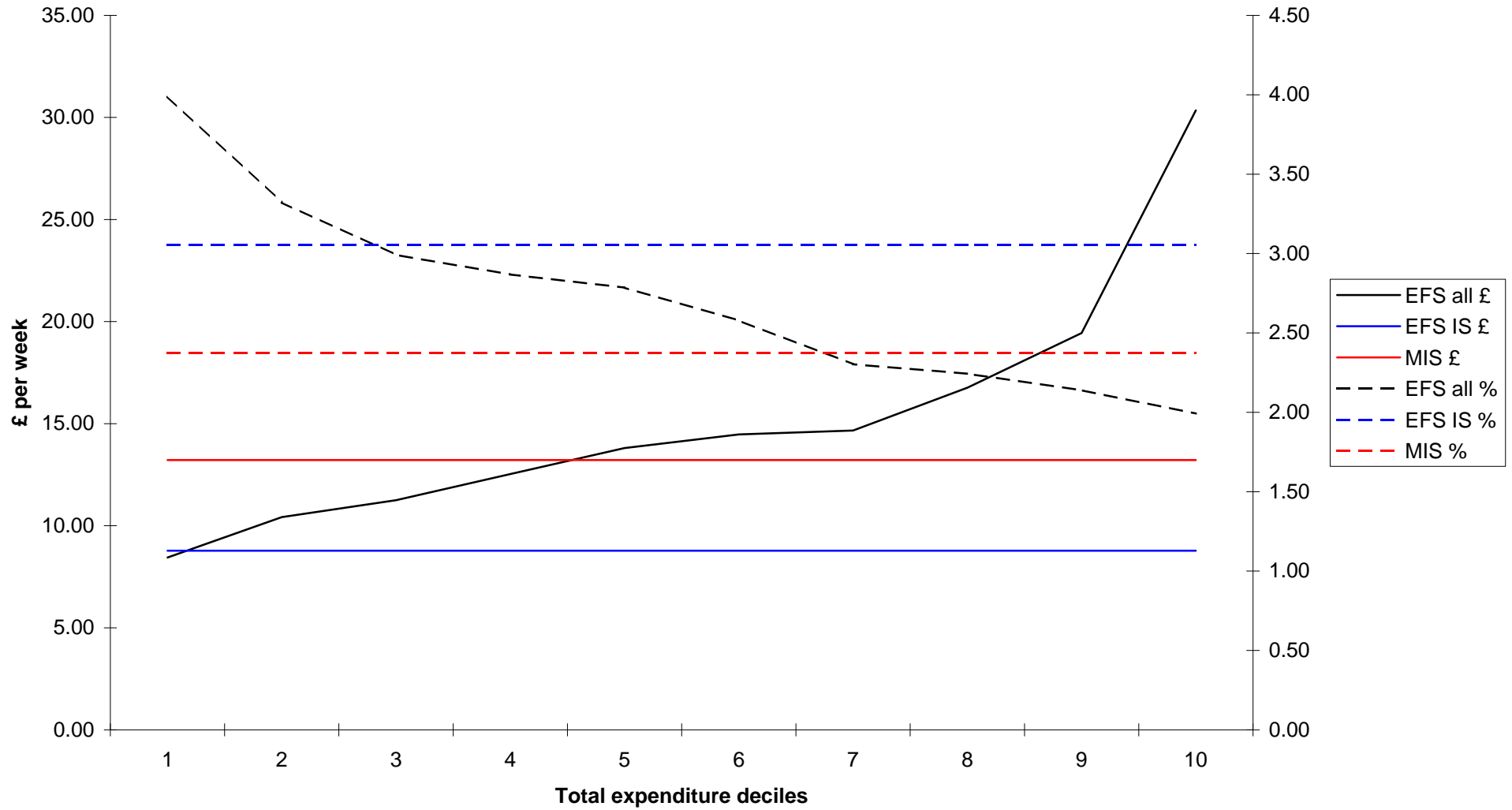
### Comparison of MIS and EFS expenditure: household goods



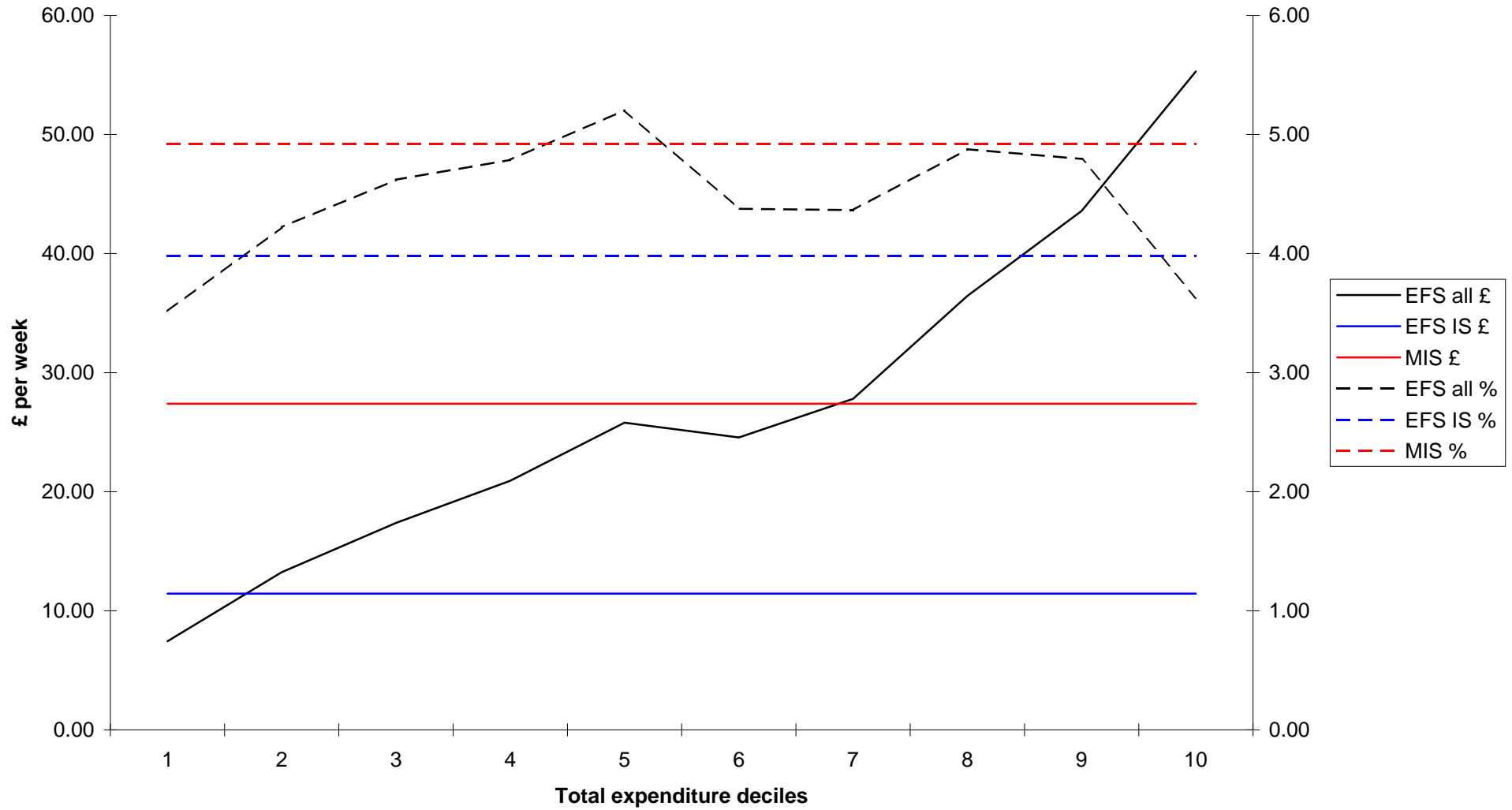
### Comparison of MIS and EFS expenditure: childcare



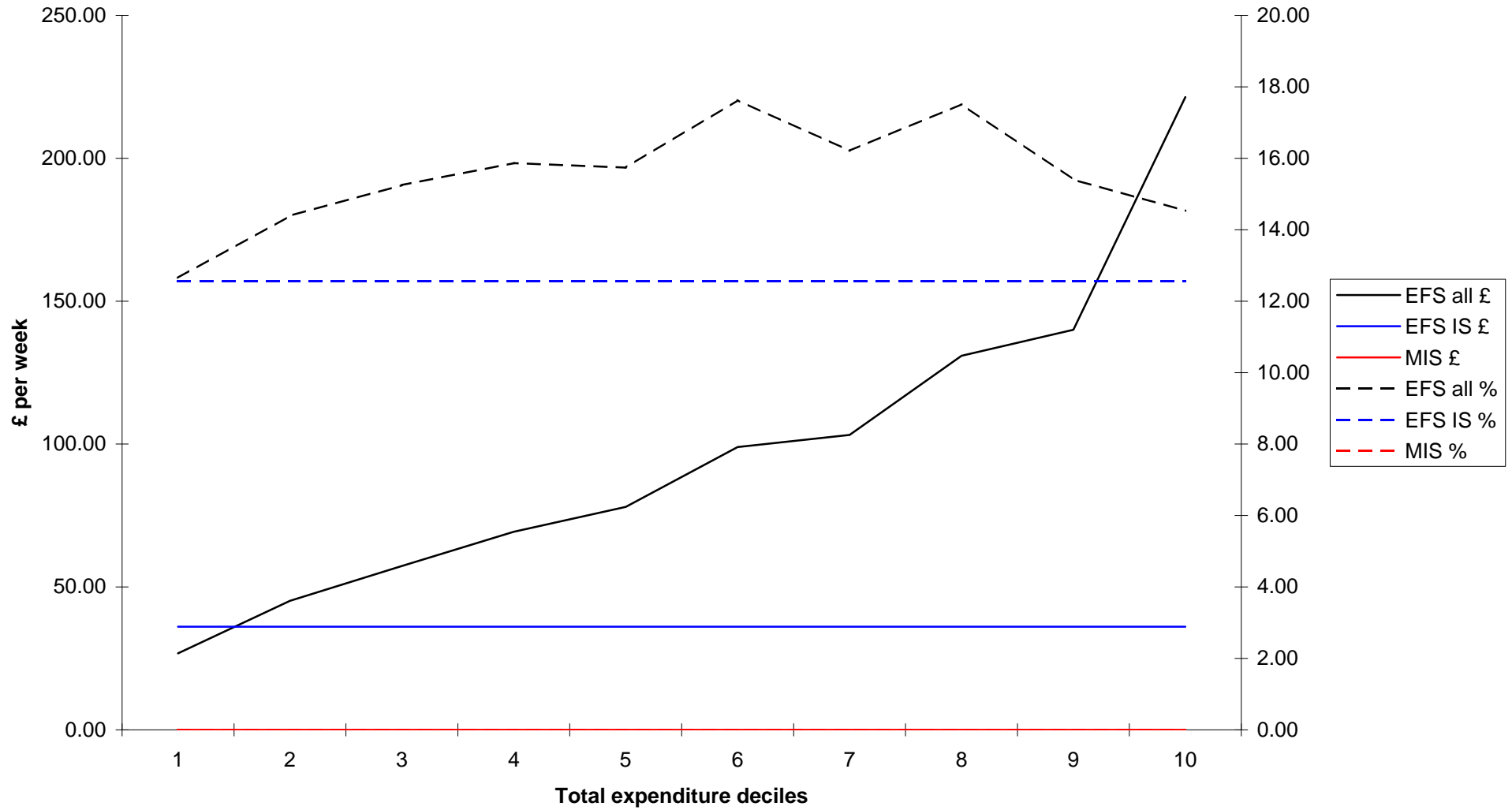
### Comparison of MIS and EFS expenditure: household services



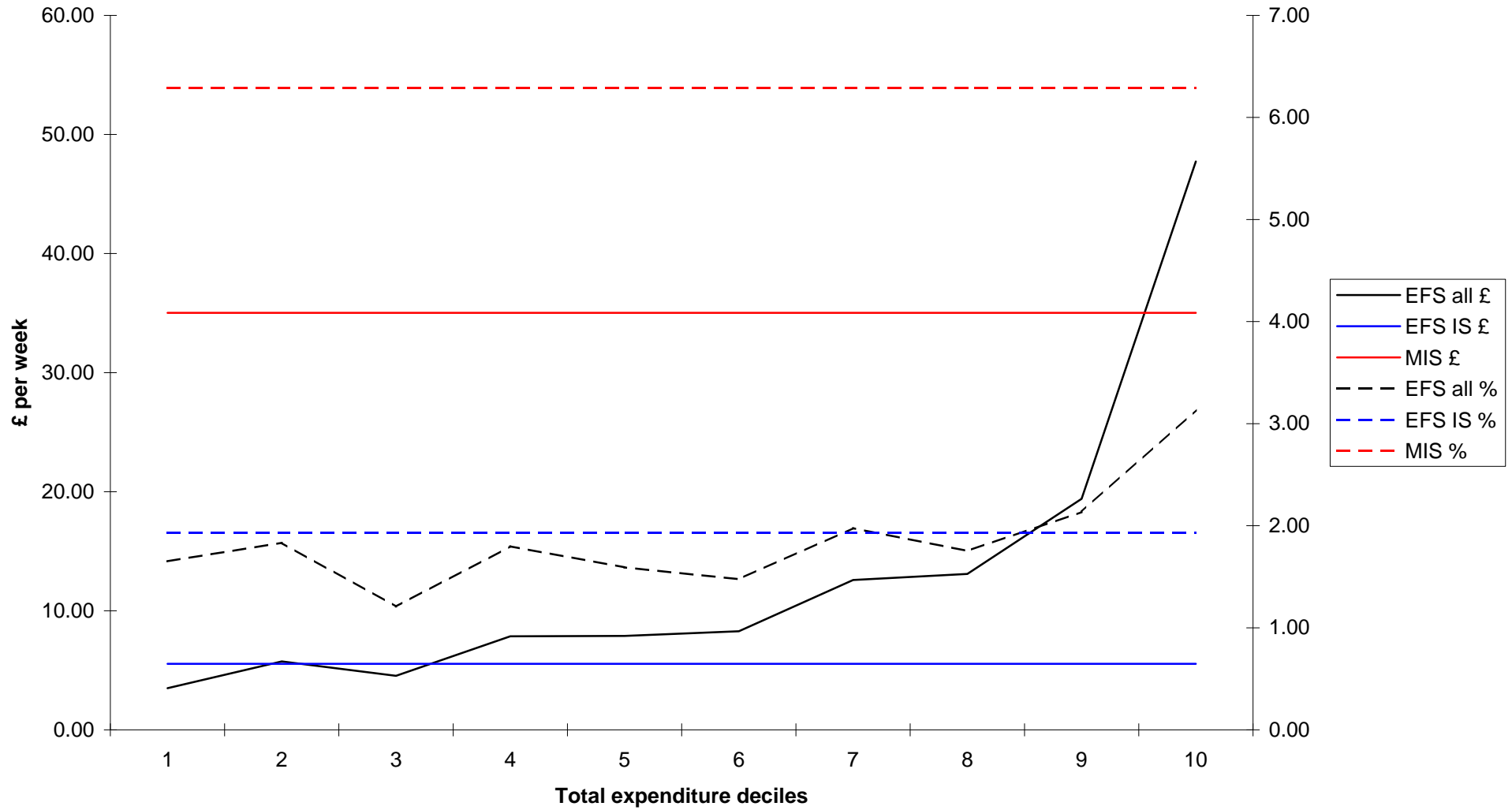
### Comparison of MIS and EFS expenditure: personal goods and services



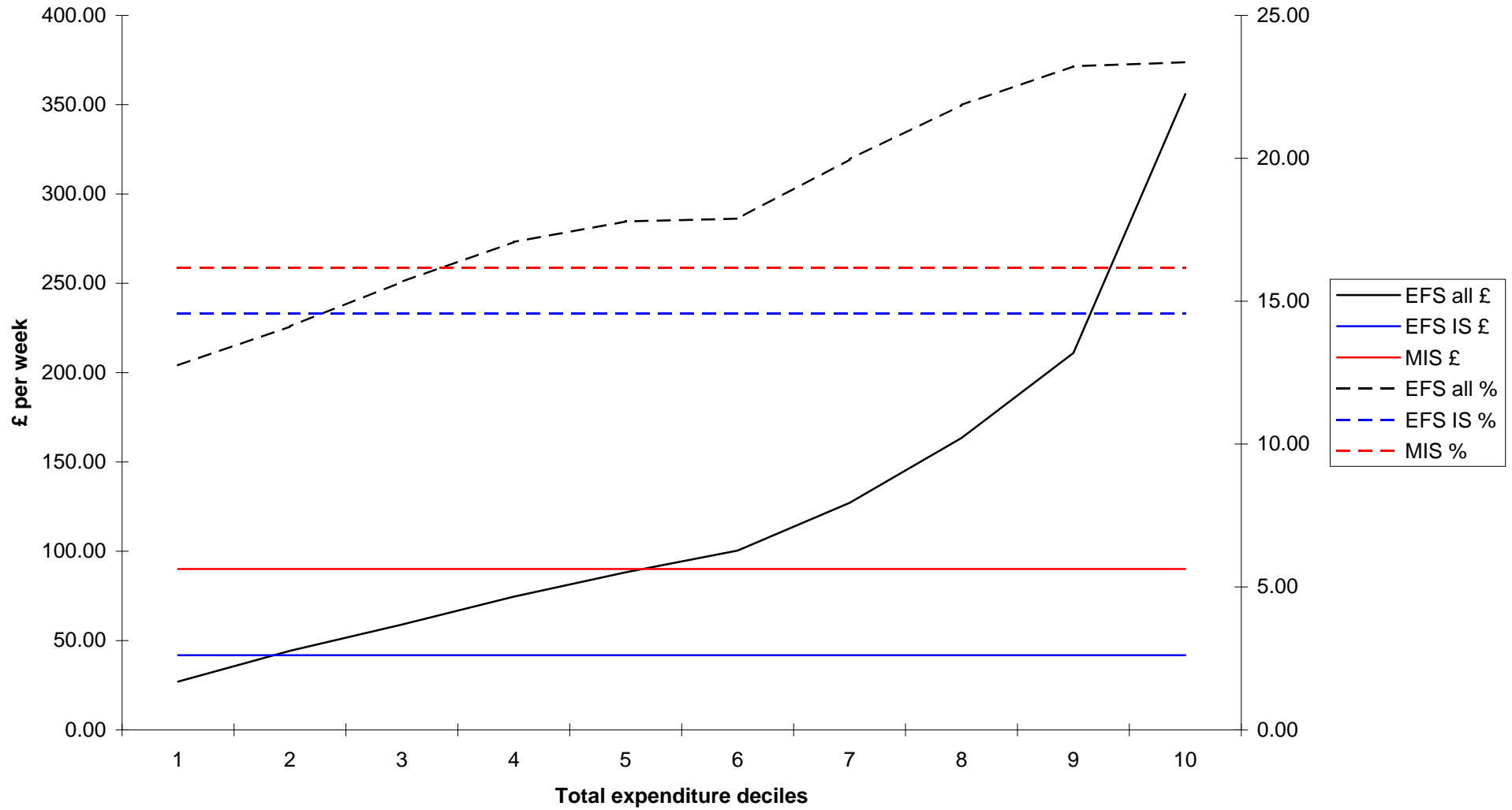
### Comparison of MIS and EFS expenditure: motoring



### Comparison of MIS and EFS expenditure: other travel costs



### Comparison of MIS and EFS expenditure: leisure



### Comparison of MIS and EFS expenditure: housing (not included in total budget)

