

Couple Pensioners	EFS ALL		EFS MIG/PC/IS		EFS Social housing		MIS	
	Mean	%	Mean	%	Mean	%	£	%
Food	65.60	18.11	53.58	23.19	52.81	24.87	53.25	26.43
Alcohol	10.83	2.99	6.69	2.90	7.11	3.35	7.40	3.67
Tobacco	2.94	0.81	5.32	2.30	5.79	2.73	0.00	0.00
Clothing	12.10	3.34	7.41	3.21	6.72	3.17	9.93	4.93
Water rates	6.31	1.74	5.88	2.55	5.70	2.68	5.56	2.76
Council tax	24.49	6.76	19.53	8.45	18.43	8.68	17.77	8.82
Household insurances	6.21	1.71	3.10	1.34	1.59	0.75	1.65	0.82
Fuel	21.00	5.80	18.15	7.85	14.93	7.03	10.62	5.27
Other housing costs	29.02	8.01	9.59	4.15	3.61	1.70	3.61	1.79
Household goods	26.33	7.27	20.79	9.00	16.10	7.58	11.12	5.52
Childcare	0.00	0.00	0.00	0.00	0.00	0.00	0.00	0.00
Household services	9.26	2.56	7.99	3.46	6.40	3.01	9.07	4.50
Personal goods and services	20.57	5.68	9.22	3.99	9.72	4.58	23.65	11.74
Motoring	48.61	13.42	20.99	9.09	19.22	9.05	0.00	0.00
Other travel costs	5.89	1.63	3.42	1.48	4.96	2.34	4.65	2.31
Leisure	73.03	20.16	39.40	17.05	39.26	18.49	43.21	21.45
Total	362.19		231.06		212.33		201.49	
Rent/mortgage interest	14.86	4.10	46.52	20.14	71.77	33.80	64.43	31.98
Other excluded from budget	73.64		5.92		10.93		0.00	
unweighted base	3579		280		486			

Total weekly expenditure in each category

Food	53.25
Alcohol	7.40
Tobacco	0.00
Clothing	9.93
Water rates	5.56
Council tax	17.77
Household insurances	1.65
Fuel	10.62
Other housing costs	3.61
Household goods	11.12
Childcare	0.00
Household services	9.07
Personal goods and services	23.65
Motoring	0.00
Other travel costs	4.65
Leisure	43.21
Total	201.49
Rent/mortgage interest	64.43
Other excluded from budget	

ALL																			
																	Report		
Mean	Rfood	Ralc	Rtob	Rclothes	Rwater	Rct	Rhsins	Rfuel	Rhsoth	Rhhgds	Rchild	Rhhser	Rper	Rcar	Rtrans	Rleisure	Rhousing	Rexcluded	total expenditure less housing costs
65.60193	10.83389	2.936596	12.09985	6.308988	24.49048	6.207677	20.99507	29.02032	26.33088	0.00153	9.260588	20.57317	48.60851	5.893896	73.026	14.86072	73.6430356	362.1893751	

IS																			
																	Report		
Mean	Rfood	Ralc	Rtob	Rclothes	Rwater	Rct	Rhsins	Rfuel	Rhsoth	Rhhgds	Rchild	Rhhser	Rper	Rcar	Rtrans	Rleisure	Rhousing	Rexcluded	total expenditure less housing costs
53.57568	6.690638	5.320723	7.408608	5.882112	19.52633	3.103213	18.14962	9.586372	20.79196		0	7.992391	9.216174	20.99263	3.423873	39.39907	46.52394	5.91810732	231.0593892

SOCIAL HOUSING																			
																	Report		
Mean	Rfood	Ralc	Rtob	Rclothes	Rwater	Rct	Rhsins	Rfuel	Rhsoth	Rhhgds	Rchild	Rhhser	Rper	Rcar	Rtrans	Rleisure	Rhousing	Rexcluded	total expenditure less housing costs
52.81407	7.105245	5.788641	6.721651	5.699122	18.42871	1.594239	14.92734	3.607645	16.09555		0	6.397004	9.716819	19.21803	4.960853	39.25771	71.7724	10.9252572	212.3326343

All

12 category family type variable

		Frequency	Percent	Valid Percent	Cumulative Percent
Valid	couple pensioner	3579	100	100	100

IS

12 category family type variable

		Frequency	Percent	Valid Percent	Cumulative Percent
Valid	couple pensioner	280	100	100	100

social housing

12 category family type variable

		Frequency	Percent	Valid Percent	Cumulative Percent
Valid	couple pensioner	486	100	100	100

Food

	EFS all £	EFS MIG/PC £	MIS £	EFS all %	EFS MIG/PC %	MIS %
1	38.39	53.58	53.25	30.87	23.19	26.43
2	48.42	53.58	53.25	27.91	23.19	26.43
3	54.22	53.58	53.25	26.24	23.19	26.43
4	58.18	53.58	53.25	24.43	23.19	26.43
5	61.99	53.58	53.25	22.53	23.19	26.43
6	64.05	53.58	53.25	20.29	23.19	26.43
7	73.10	53.58	53.25	20.04	23.19	26.43
8	76.28	53.58	53.25	17.54	23.19	26.43
9	86.82	53.58	53.25	15.70	23.19	26.43
10	95.43	53.58	53.25	10.03	23.19	26.43
total	65.60	53.58	53.25	18.11	23.19	26.43

Alcohol

	EFS all £	EFS MIG/PC £	MIS £	EFS all %	EFS MIG/PC %	MIS %
1	2.35	6.69	7.40	1.89	2.90	3.67
2	5.59	6.69	7.40	3.22	2.90	3.67
3	6.90	6.69	7.40	3.34	2.90	3.67
4	8.30	6.69	7.40	3.48	2.90	3.67
5	9.11	6.69	7.40	3.31	2.90	3.67
6	11.08	6.69	7.40	3.51	2.90	3.67
7	12.47	6.69	7.40	3.42	2.90	3.67
8	16.07	6.69	7.40	3.70	2.90	3.67
9	17.48	6.69	7.40	3.16	2.90	3.67
10	19.23	6.69	7.40	2.02	2.90	3.67
total	10.83	6.69	7.40	2.99	2.90	3.67

Tobacco

	EFS all £	EFS MIG/PC £	MIS £	EFS all %	EFS MIG/PC %	MIS %
1	1.30	5.32	0.00	1.05	2.30	0.00
2	2.74	5.32	0.00	1.58	2.30	0.00
3	3.99	5.32	0.00	1.93	2.30	0.00
4	3.82	5.32	0.00	1.60	2.30	0.00
5	3.39	5.32	0.00	1.23	2.30	0.00
6	3.94	5.32	0.00	1.25	2.30	0.00
7	3.29	5.32	0.00	0.90	2.30	0.00
8	2.80	5.32	0.00	0.64	2.30	0.00
9	2.04	5.32	0.00	0.37	2.30	0.00
10	1.99	5.32	0.00	0.21	2.30	0.00
total	2.94	5.32	0.00	0.81	2.30	0.00

Clothing

	EFS all £	EFS MIG/PC £	MIS £	EFS all %	EFS MIG/PC %	MIS %
1	2.37	7.41	9.93	1.91	3.21	4.93
2	4.96	7.41	9.93	2.86	3.21	4.93
3	6.14	7.41	9.93	2.97	3.21	4.93
4	7.07	7.41	9.93	2.97	3.21	4.93
5	9.35	7.41	9.93	3.40	3.21	4.93
6	11.64	7.41	9.93	3.69	3.21	4.93
7	14.08	7.41	9.93	3.86	3.21	4.93
8	16.41	7.41	9.93	3.77	3.21	4.93
9	22.00	7.41	9.93	3.98	3.21	4.93
10	27.45	7.41	9.93	2.88	3.21	4.93
total	12.10	7.41	9.93	3.34	3.21	4.93

Water rates

	EFS all £	EFS MIG/PC £	MIS £	EFS all %	EFS MIG/PC %	MIS %
1	5.17	5.88	5.56	4.16	2.55	2.76
2	5.97	5.88	5.56	3.44	2.55	2.76
3	5.85	5.88	5.56	2.83	2.55	2.76
4	6.08	5.88	5.56	2.56	2.55	2.76
5	6.53	5.88	5.56	2.38	2.55	2.76
6	6.09	5.88	5.56	1.93	2.55	2.76
7	6.66	5.88	5.56	1.83	2.55	2.76
8	6.69	5.88	5.56	1.54	2.55	2.76
9	6.71	5.88	5.56	1.21	2.55	2.76
10	7.36	5.88	5.56	0.77	2.55	2.76
total	6.31	5.88	5.56	1.74	2.55	2.76

Council tax

	EFS all £	EFS MIG/PC £	MIS £	EFS all %	EFS MIG/PC %	MIS %
1	19.12	19.53	17.77	15.37	8.45	8.82
2	21.18	19.53	17.77	12.21	8.45	8.82
3	22.12	19.53	17.77	10.71	8.45	8.82
4	22.60	19.53	17.77	9.49	8.45	8.82
5	23.79	19.53	17.77	8.65	8.45	8.82
6	23.93	19.53	17.77	7.58	8.45	8.82
7	24.73	19.53	17.77	6.78	8.45	8.82
8	26.96	19.53	17.77	6.20	8.45	8.82
9	28.55	19.53	17.77	5.16	8.45	8.82
10	32.10	19.53	17.77	3.37	8.45	8.82
total	24.49	19.53	17.77	6.76	8.45	8.82

Household insurances

	EFS all £	EFS MIG/PC £	MIS £	EFS all %	EFS MIG/PC %	MIS %
1	2.99	3.10	1.65	2.40	1.34	0.82
2	3.86	3.10	1.65	2.22	1.34	0.82
3	4.62	3.10	1.65	2.24	1.34	0.82
4	5.32	3.10	1.65	2.23	1.34	0.82
5	6.01	3.10	1.65	2.19	1.34	0.82
6	5.83	3.10	1.65	1.85	1.34	0.82
7	6.73	3.10	1.65	1.85	1.34	0.82
8	7.24	3.10	1.65	1.66	1.34	0.82
9	8.79	3.10	1.65	1.59	1.34	0.82
10	10.79	3.10	1.65	1.13	1.34	0.82
total	6.21	3.10	1.65	1.71	1.34	0.82

Fuel

	EFS all £	EFS MIG/PC £	MIS £	EFS all %	EFS MIG/PC %	MIS %
1	15.36	18.15	10.62	12.35	7.85	5.27
2	17.05	18.15	10.62	9.83	7.85	5.27
3	18.46	18.15	10.62	8.93	7.85	5.27
4	19.16	18.15	10.62	8.04	7.85	5.27
5	20.35	18.15	10.62	7.40	7.85	5.27
6	20.05	18.15	10.62	6.35	7.85	5.27
7	22.11	18.15	10.62	6.06	7.85	5.27
8	23.02	18.15	10.62	5.29	7.85	5.27
9	24.39	18.15	10.62	4.41	7.85	5.27
10	30.24	18.15	10.62	3.18	7.85	5.27
total	21.00	18.15	10.62	5.80	7.85	5.27

Other housing costs

	EFS all £	EFS MIG/PC £	MIS £	EFS all %	EFS MIG/PC %	MIS %
1	2.60	9.59	3.61	2.09	4.15	1.79
2	5.03	9.59	3.61	2.90	4.15	1.79
3	9.22	9.59	3.61	4.46	4.15	1.79
4	10.24	9.59	3.61	4.30	4.15	1.79
5	13.47	9.59	3.61	4.90	4.15	1.79
6	20.29	9.59	3.61	6.43	4.15	1.79
7	23.70	9.59	3.61	6.50	4.15	1.79
8	31.76	9.59	3.61	7.30	4.15	1.79
9	47.76	9.59	3.61	8.64	4.15	1.79
10	128.69	9.59	3.61	13.52	4.15	1.79
total	29.02	9.59	3.61	8.01	4.15	1.79

Household goods

	EFS all £	EFS MIG/PC £	MIS £	EFS all %	EFS MIG/PC %	MIS %
1	4.41	20.79	11.12	3.54	9.00	5.52
2	6.85	20.79	11.12	3.95	9.00	5.52
3	10.15	20.79	11.12	4.91	9.00	5.52
4	15.04	20.79	11.12	6.32	9.00	5.52
5	15.19	20.79	11.12	5.52	9.00	5.52
6	24.85	20.79	11.12	7.87	9.00	5.52
7	25.29	20.79	11.12	6.93	9.00	5.52
8	33.35	20.79	11.12	7.67	9.00	5.52
9	43.85	20.79	11.12	7.93	9.00	5.52
10	85.97	20.79	11.12	9.03	9.00	5.52
total						

Childcare

	EFS all £	EFS MIG/PC £	MIS £	EFS all %	EFS MIG/PC %	MIS %
1	0.00	0.00	0.00	0.00	0.00	0.00
2	0.00	0.00	0.00	0.00	0.00	0.00
3	0.00	0.00	0.00	0.00	0.00	0.00
4	0.01	0.00	0.00	0.00	0.00	0.00
5	0.00	0.00	0.00	0.00	0.00	0.00
6	0.00	0.00	0.00	0.00	0.00	0.00
7	0.00	0.00	0.00	0.00	0.00	0.00
8	0.00	0.00	0.00	0.00	0.00	0.00
9	0.01	0.00	0.00	0.00	0.00	0.00
10	0.00	0.00	0.00	0.00	0.00	0.00
total	0.00	0.00	0.00	0.00	0.00	0.00

Household services

	EFS all £	EFS MIG/PC £	MIS £	EFS all %	EFS MIG/PC %	MIS %
1	4.84	7.99	9.07	3.89	3.46	4.50
2	5.59	7.99	9.07	3.22	3.46	4.50
3	5.89	7.99	9.07	2.85	3.46	4.50
4	7.25	7.99	9.07	3.04	3.46	4.50
5	7.64	7.99	9.07	2.78	3.46	4.50
6	7.32	7.99	9.07	2.32	3.46	4.50
7	8.95	7.99	9.07	2.45	3.46	4.50
8	10.96	7.99	9.07	2.52	3.46	4.50
9	12.89	7.99	9.07	2.33	3.46	4.50
10	21.60	7.99	9.07	2.27	3.46	4.50
total	9.26	7.99	9.07	2.56	3.46	4.50

Personal goods and services

	EFS all £	EFS MIG/PC £	MIS £	EFS all %	EFS MIG/PC %	MIS %
1	4.67	9.22	23.65	3.76	3.99	11.74
2	7.19	9.22	23.65	4.15	3.99	11.74
3	8.38	9.22	23.65	4.06	3.99	11.74
4	11.38	9.22	23.65	4.78	3.99	11.74
5	13.11	9.22	23.65	4.76	3.99	11.74
6	17.76	9.22	23.65	5.63	3.99	11.74
7	22.21	9.22	23.65	6.09	3.99	11.74
8	27.45	9.22	23.65	6.31	3.99	11.74
9	36.05	9.22	23.65	6.52	3.99	11.74
10	58.65	9.22	23.65	6.16	3.99	11.74
total	20.57	9.22	23.65	5.68	3.99	11.74

Motoring

	EFS all £	EFS MIG/PC £	MIS £	EFS all %	EFS MIG/PC %	MIS %
1	7.59	20.99	0.00	6.11	9.09	0.00
2	14.55	20.99	0.00	8.39	9.09	0.00
3	20.10	20.99	0.00	9.73	9.09	0.00
4	24.14	20.99	0.00	10.14	9.09	0.00
5	35.37	20.99	0.00	12.85	9.09	0.00
6	39.75	20.99	0.00	12.59	9.09	0.00
7	49.65	20.99	0.00	13.61	9.09	0.00
8	61.11	20.99	0.00	14.05	9.09	0.00
9	83.55	20.99	0.00	15.11	9.09	0.00
10	153.09	20.99	0.00	16.09	9.09	0.00
total	48.61	20.99	0.00	13.42	9.09	0.00

Other travel costs

	EFS all £	EFS MIG/PC £	MIS £	EFS all %	EFS MIG/PC %	MIS %
1	1.08	3.42	4.65	0.87	1.48	2.31
2	2.29	3.42	4.65	1.32	1.48	2.31
3	3.31	3.42	4.65	1.60	1.48	2.31
4	2.87	3.42	4.65	1.20	1.48	2.31
5	3.56	3.42	4.65	1.29	1.48	2.31
6	2.63	3.42	4.65	0.83	1.48	2.31
7	4.12	3.42	4.65	1.13	1.48	2.31
8	5.32	3.42	4.65	1.22	1.48	2.31
9	6.79	3.42	4.65	1.23	1.48	2.31
10	27.47	3.42	4.65	2.89	1.48	2.31
total	5.89	3.42	4.65	1.63	1.48	2.31

Leisure

	EFS all £	EFS MIG/PC £	MIS £	EFS all %	EFS MIG/PC %	MIS %
1	12.12	39.40	43.21	9.75	17.05	21.45
2	22.23	39.40	43.21	12.82	17.05	21.45
3	27.27	39.40	43.21	13.20	17.05	21.45
4	36.66	39.40	43.21	15.40	17.05	21.45
5	46.28	39.40	43.21	16.82	17.05	21.45
6	56.45	39.40	43.21	17.88	17.05	21.45
7	67.58	39.40	43.21	18.53	17.05	21.45
8	89.53	39.40	43.21	20.58	17.05	21.45
9	125.24	39.40	43.21	22.65	17.05	21.45
10	251.54	39.40	43.21	26.43	17.05	21.45
total	73.03	39.40	43.21	20.16	17.05	21.45

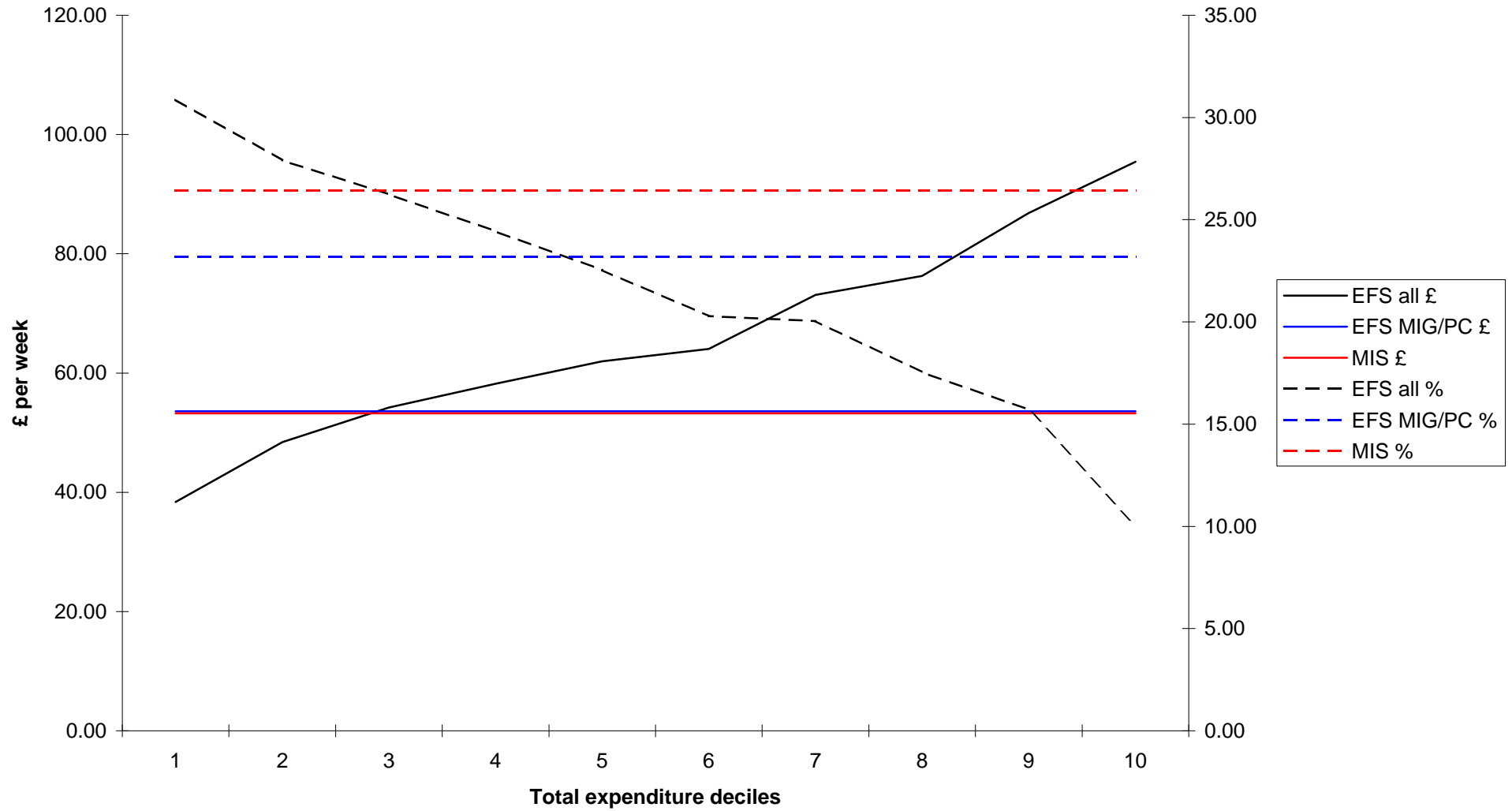
Rent/mortgage interest

	EFS all £	EFS MIG/PC £	MIS £	EFS all %	EFS MIG/PC %	MIS %
1	32.77	46.52	64.43	26.34	20.14	31.98
2	30.35	46.52	64.43	17.49	20.14	31.98
3	18.04	46.52	64.43	8.73	20.14	31.98
4	16.02	46.52	64.43	6.73	20.14	31.98
5	11.27	46.52	64.43	4.10	20.14	31.98
6	9.89	46.52	64.43	3.13	20.14	31.98
7	10.30	46.52	64.43	2.82	20.14	31.98
8	7.30	46.52	64.43	1.68	20.14	31.98
9	7.09	46.52	64.43	1.28	20.14	31.98
10	5.34	46.52	64.43	0.56	20.14	31.98
total	14.86	46.52	64.43	4.10	20.14	31.98

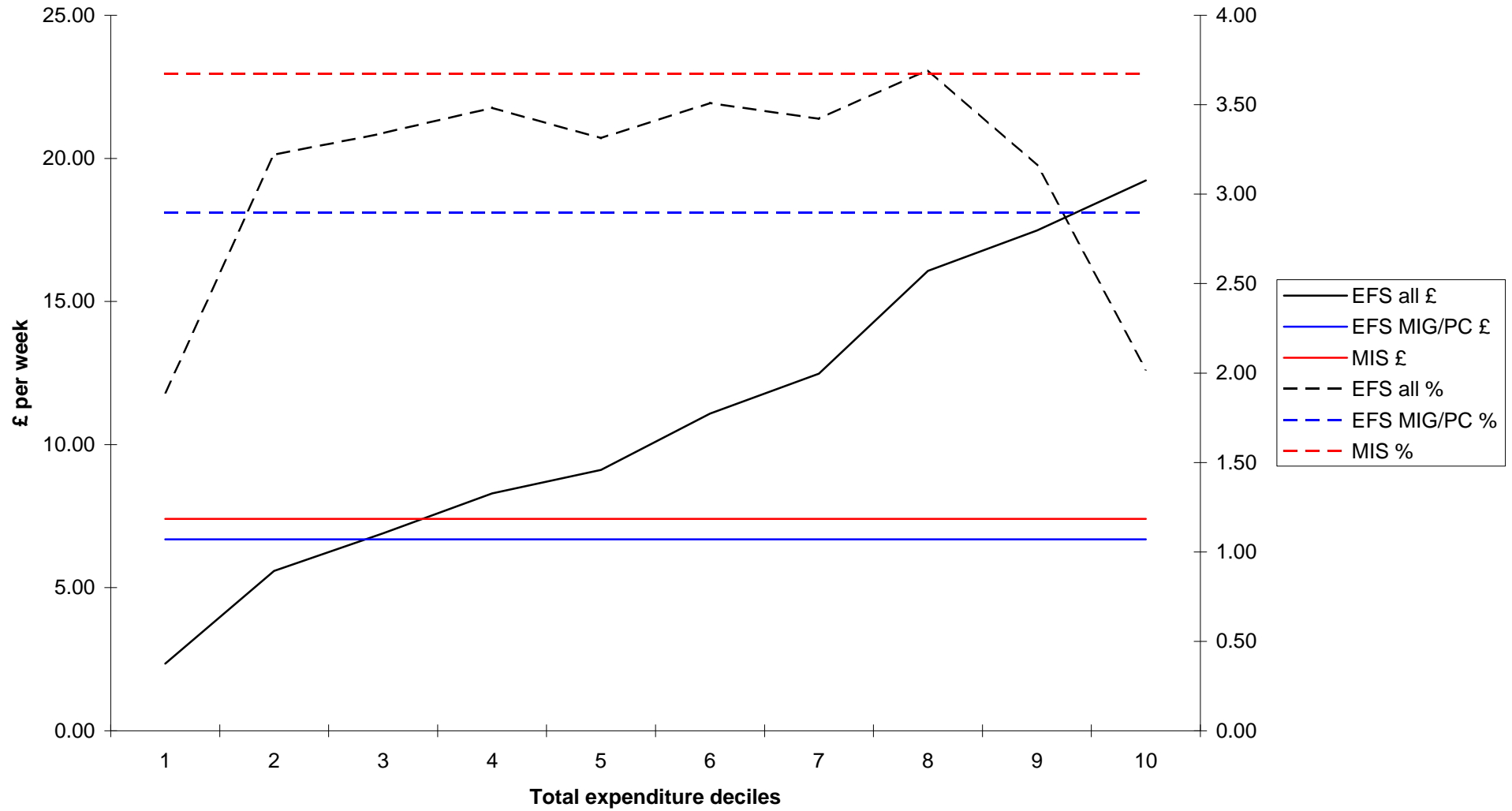
Report

Mean total expenditure less housing costs (Binned)	Rfood	Ralc	Rtob	Rclothes	Rwater	Rct	Rhsins	Rfuel	Rsoth	Rhghds	Rchild	Rhser	Rper	Rcar	Rtrans	Rleisure	Rhousing	Rexcluded	total expenditure less housing costs
1	38.39319	2.35159	1.304436	2.373766	5.168728	19.11584	2.990495	15.35864	2.602661	4.409153	0	4.843011	4.672	7.59369	1.079745	12.12144	32.76747	8.61577739	124.3783855
2	48.41506	5.587333	2.741867	4.957822	5.96526	21.1813	3.859586	17.05388	5.031775	6.846093	0	5.592787	7.191547	14.54818	2.28916	22.23423	30.35099	12.9394888	173.4958838
3	54.21678	6.903469	3.993517	6.135801	5.853826	22.12016	4.618238	18.45813	9.221179	10.14553	0	5.889212	8.381768	20.09637	3.3093	27.26668	18.04443	33.3414747	206.6099581
4	58.18075	8.29551	3.817397	7.06733	6.084985	22.60327	5.320915	19.15713	10.24485	15.0438	0.006036	7.245554	11.38188	24.14481	2.868094	36.6633	16.01863	64.5693111	238.1256148
5	61.98857	9.114047	3.394399	9.348427	6.534831	23.79249	6.012257	20.35485	13.46909	15.1891	0.002055	7.63737	13.10594	35.36536	3.555819	46.28354	11.27141	26.8636411	275.148138
6	64.05311	11.0794	3.937841	11.63974	6.089526	23.93234	5.833504	20.04803	20.29185	24.85071	0	7.318908	17.76239	39.75432	2.627822	56.44981	9.89248	32.6958272	315.6692922
7	73.09608	12.47488	3.292913	14.08321	6.65529	24.72638	6.733196	22.11204	23.70024	25.28582	0	8.950911	22.21443	49.64821	4.118367	67.58097	10.29652	49.7555933	364.6729441
8	76.27909	16.0712	2.79547	16.41328	6.685469	26.96433	7.238235	23.02339	31.75807	33.3468	0	10.95688	27.4473	61.11075	5.315821	89.52796	7.295756	50.7863893	434.9340583
9	86.82253	17.48185	2.037853	22.00324	6.714858	28.55021	8.79364	24.39168	47.7556	43.85319	0.007024	12.88804	36.05333	83.55035	6.794031	125.2385	7.088159	80.0793334	552.9358748
10	95.43013	19.23228	1.989072	27.44669	7.357942	32.09701	10.79208	30.2392	128.6909	85.97358	0	21.59762	58.64766	153.0942	27.47116	251.5429	5.341495	383.854476	951.6024117
Total	65.60193	10.83389	2.936596	12.09985	6.308988	24.49048	6.207677	20.99507	29.02032	26.33088	0.00153	9.260588	20.57317	48.60851	5.893896	73.026	14.86072	73.6430356	362.1893751

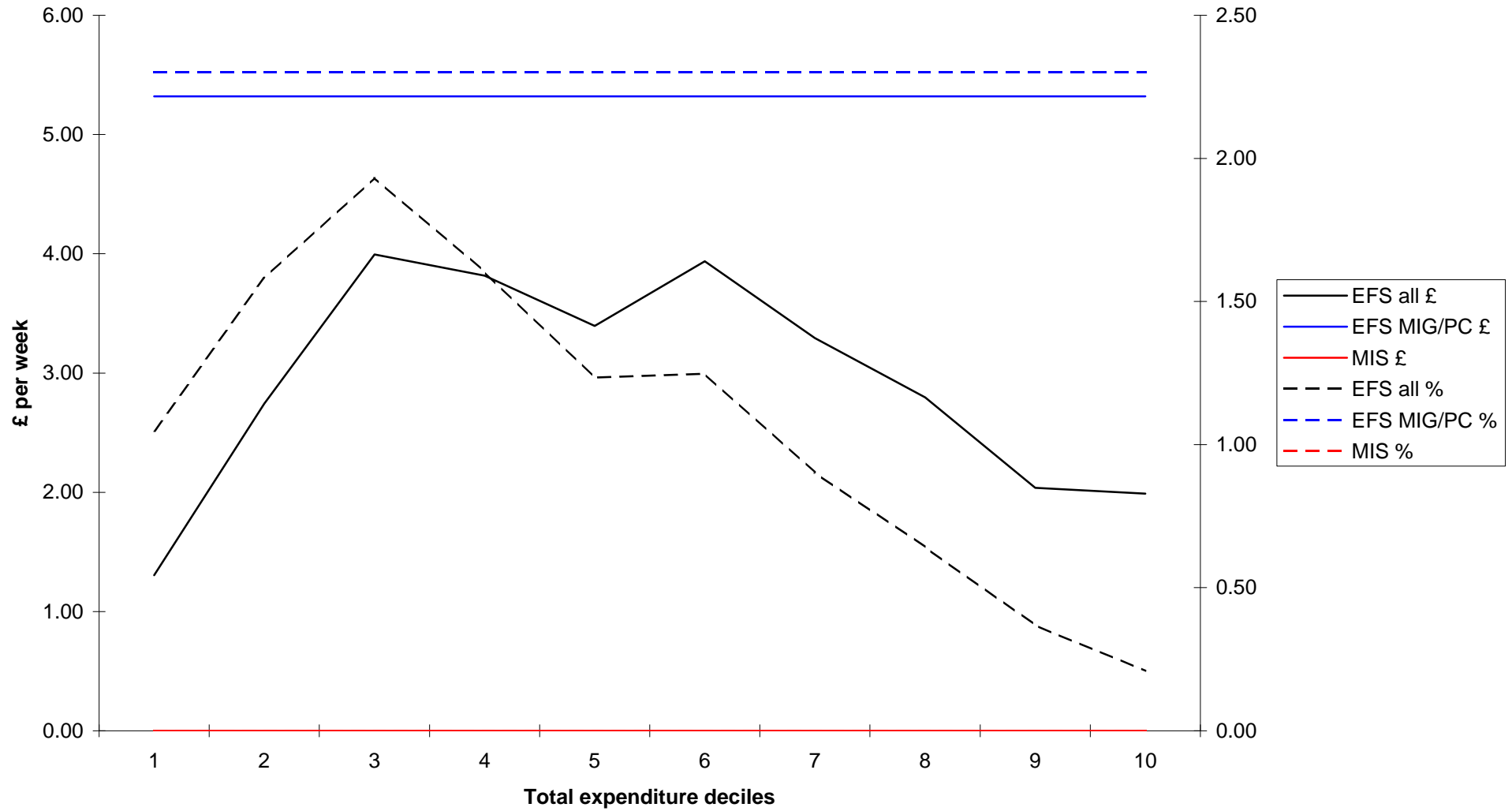
Comparison of MIS and EFS expenditure: food



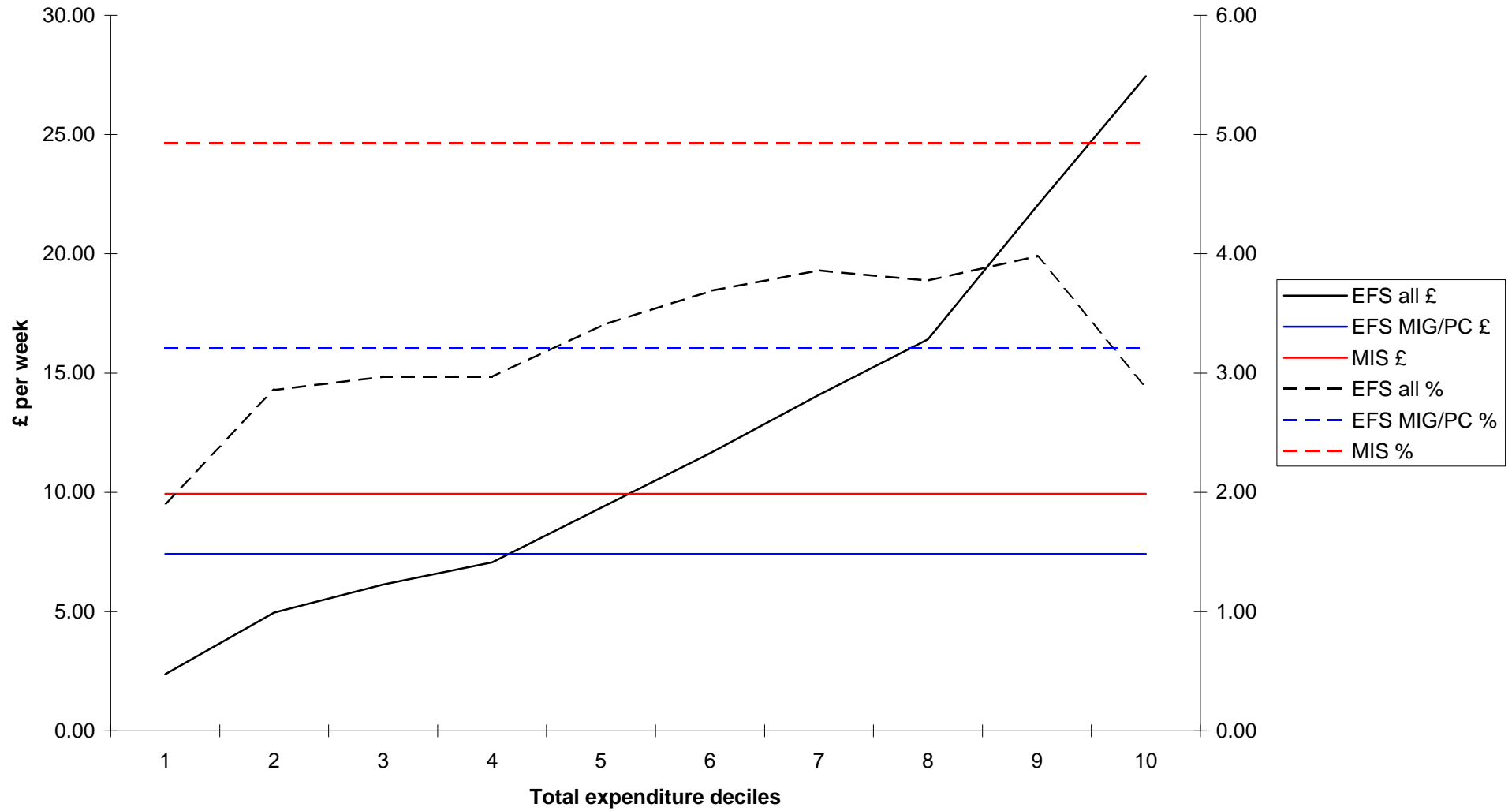
Comparison of MIS and EFS expenditure: alcohol



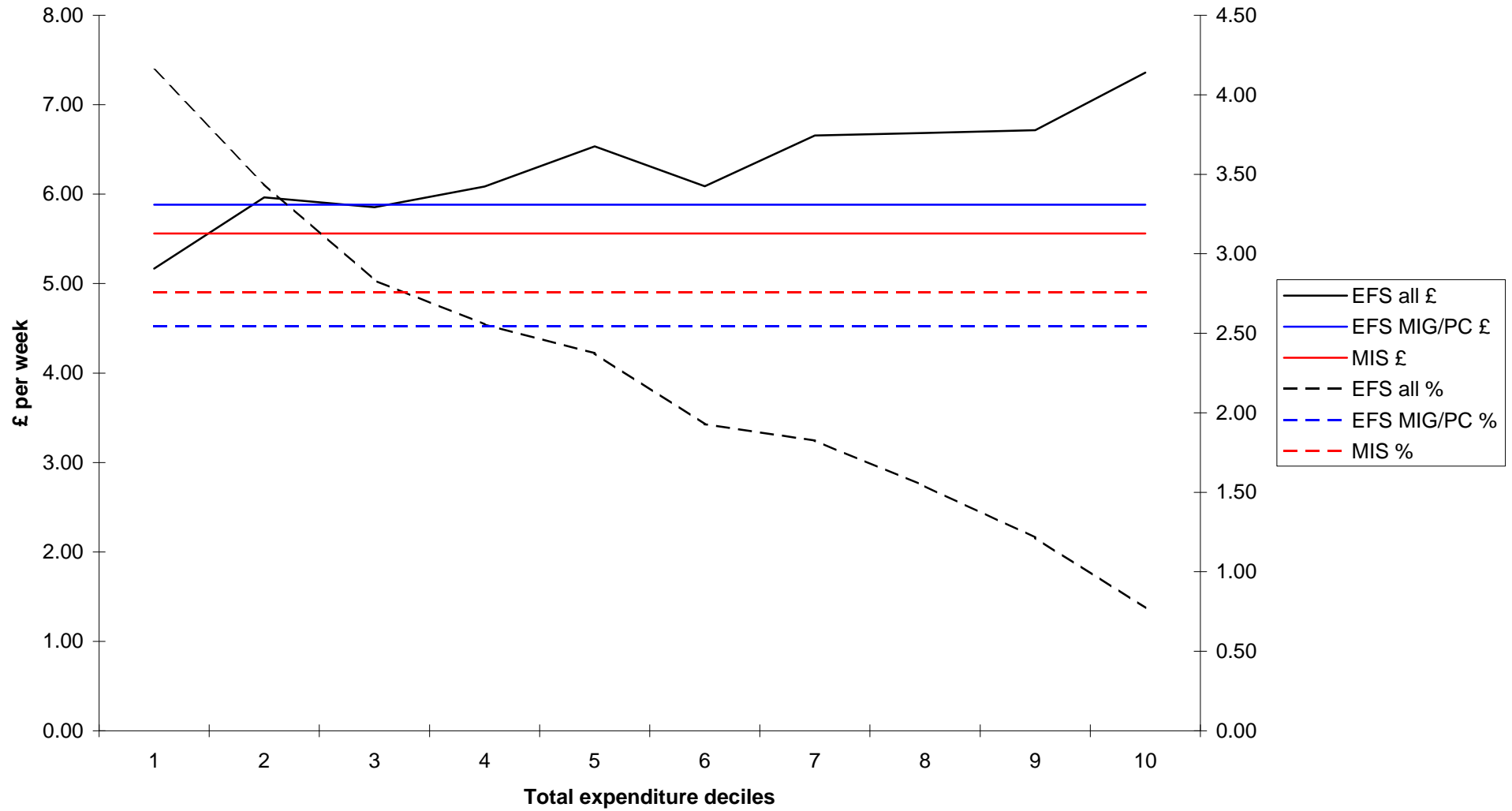
Comparison of MIS and EFS expenditure: tobacco



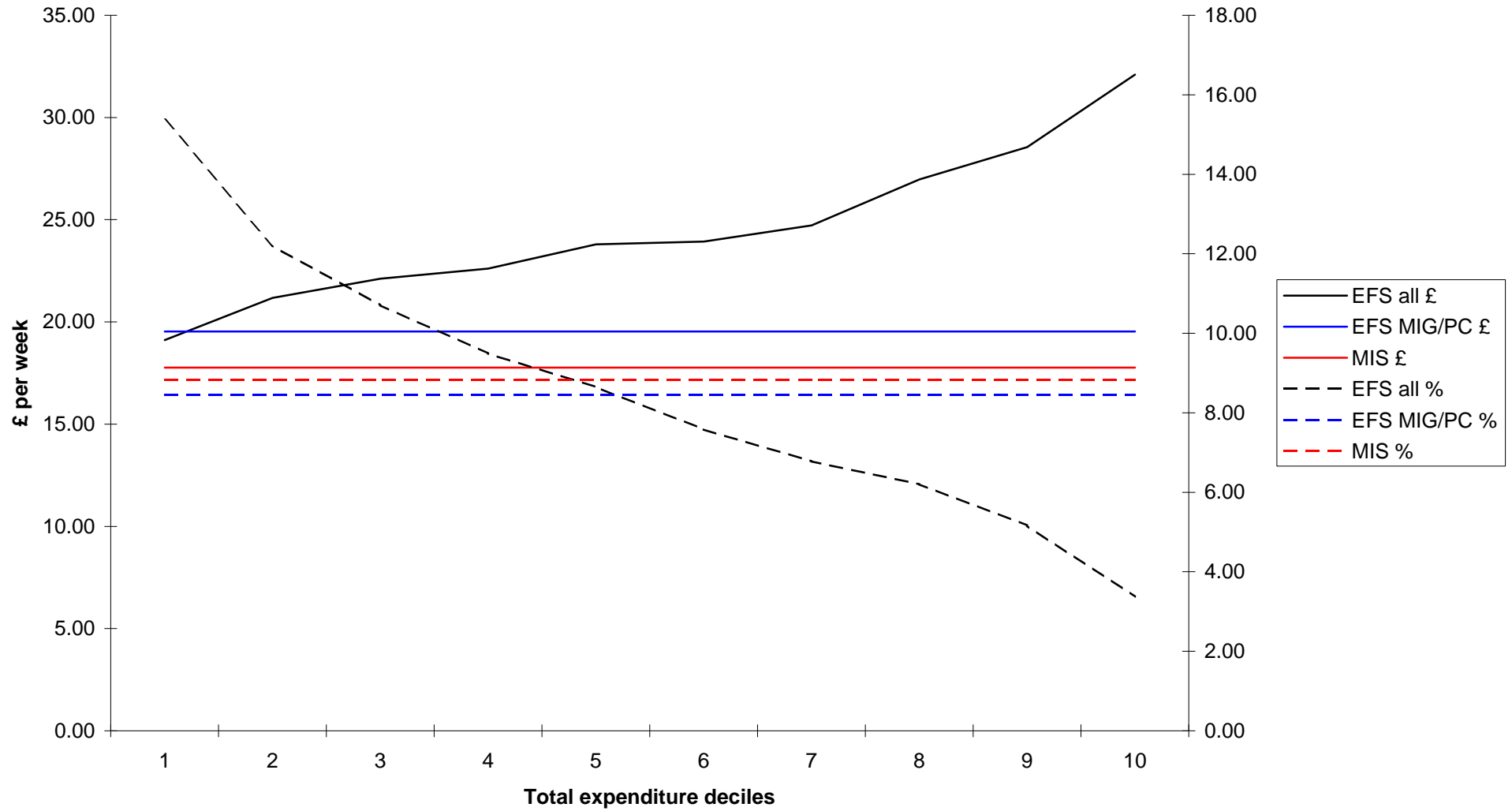
Comparison of MIS and EFS expenditure: clothing



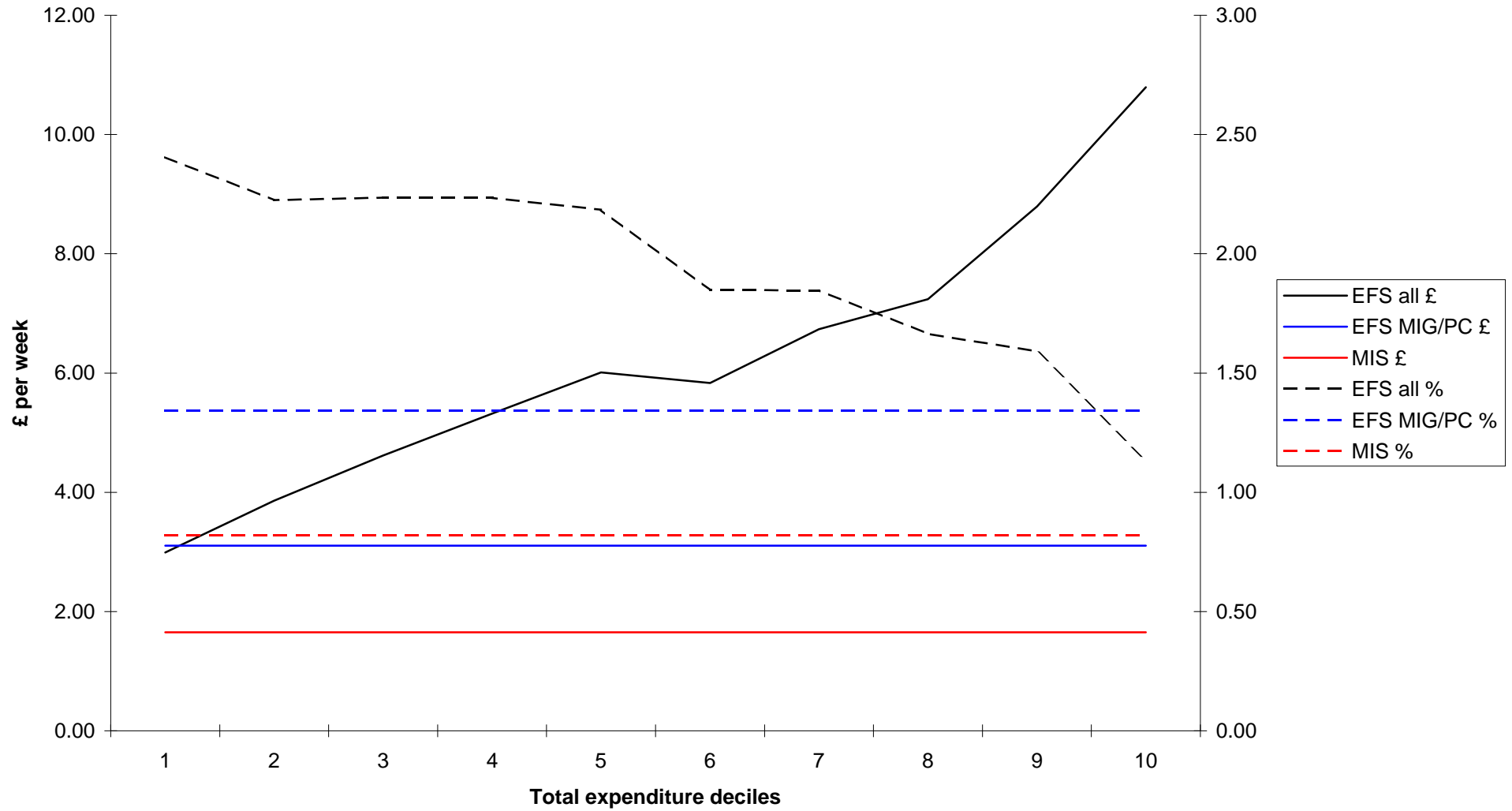
Comparison of MIS and EFS expenditure: water rates



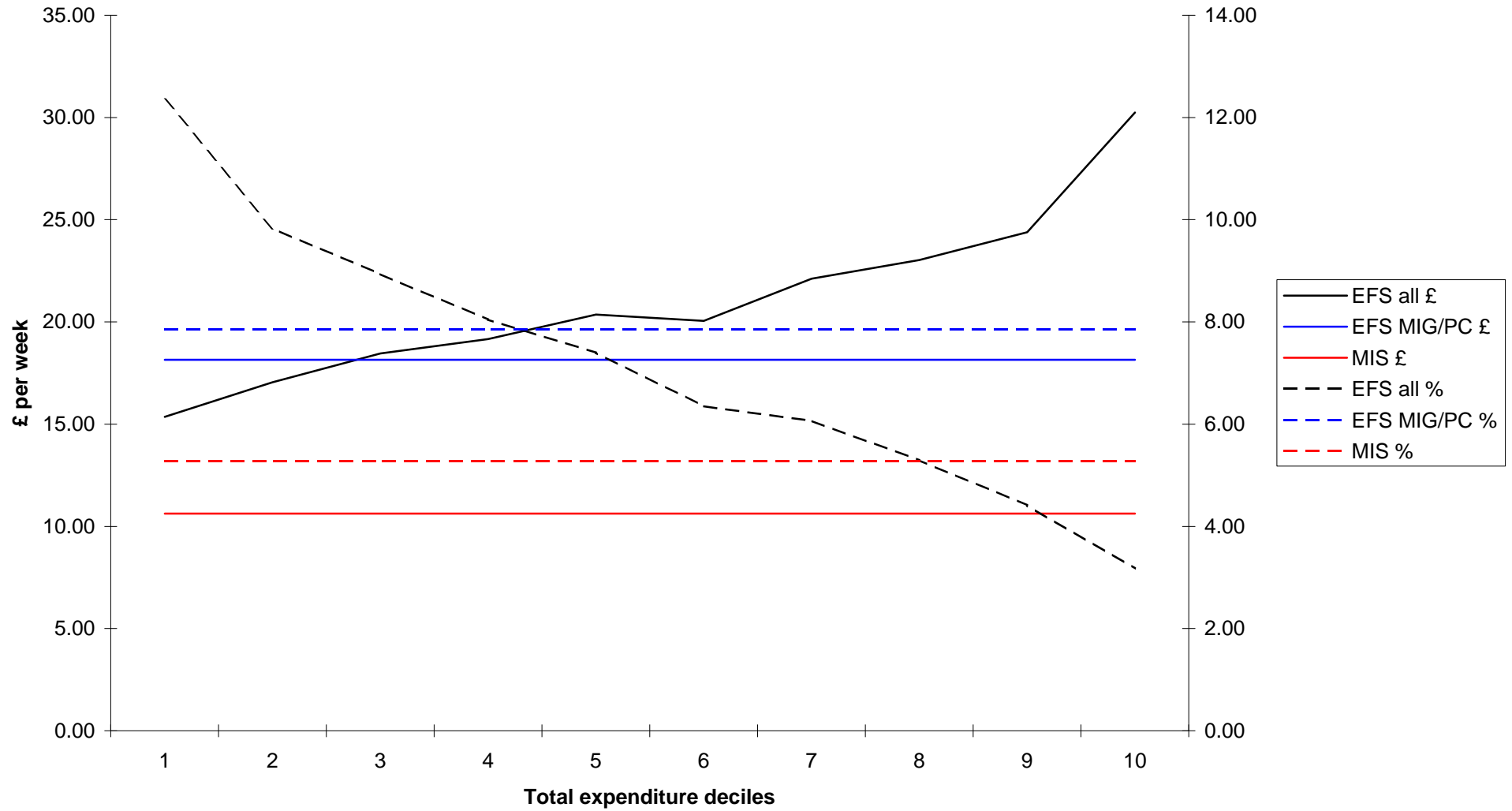
Comparison of MIS and EFS expenditure: council tax



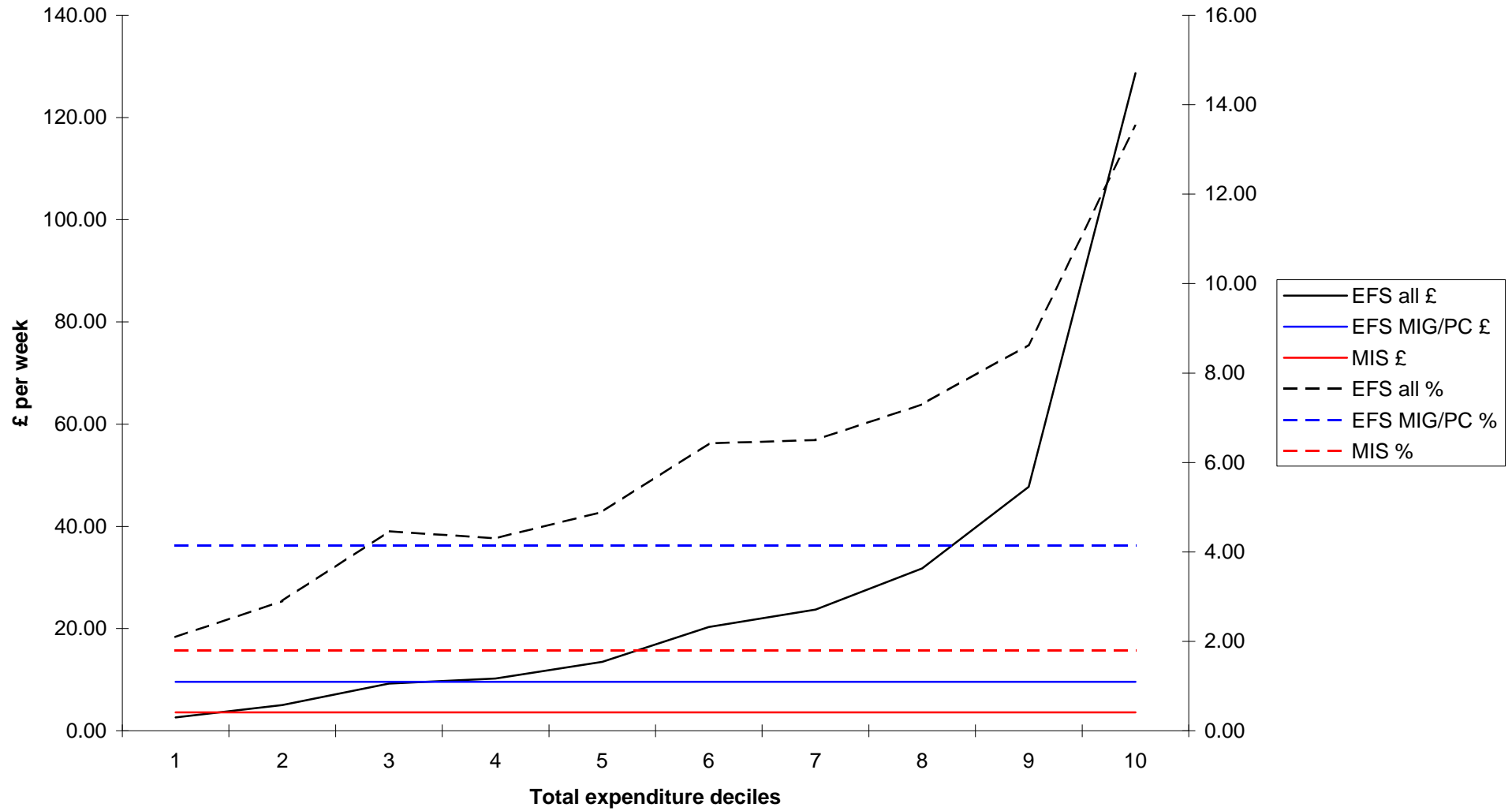
Comparison of MIS and EFS expenditure: household insurances



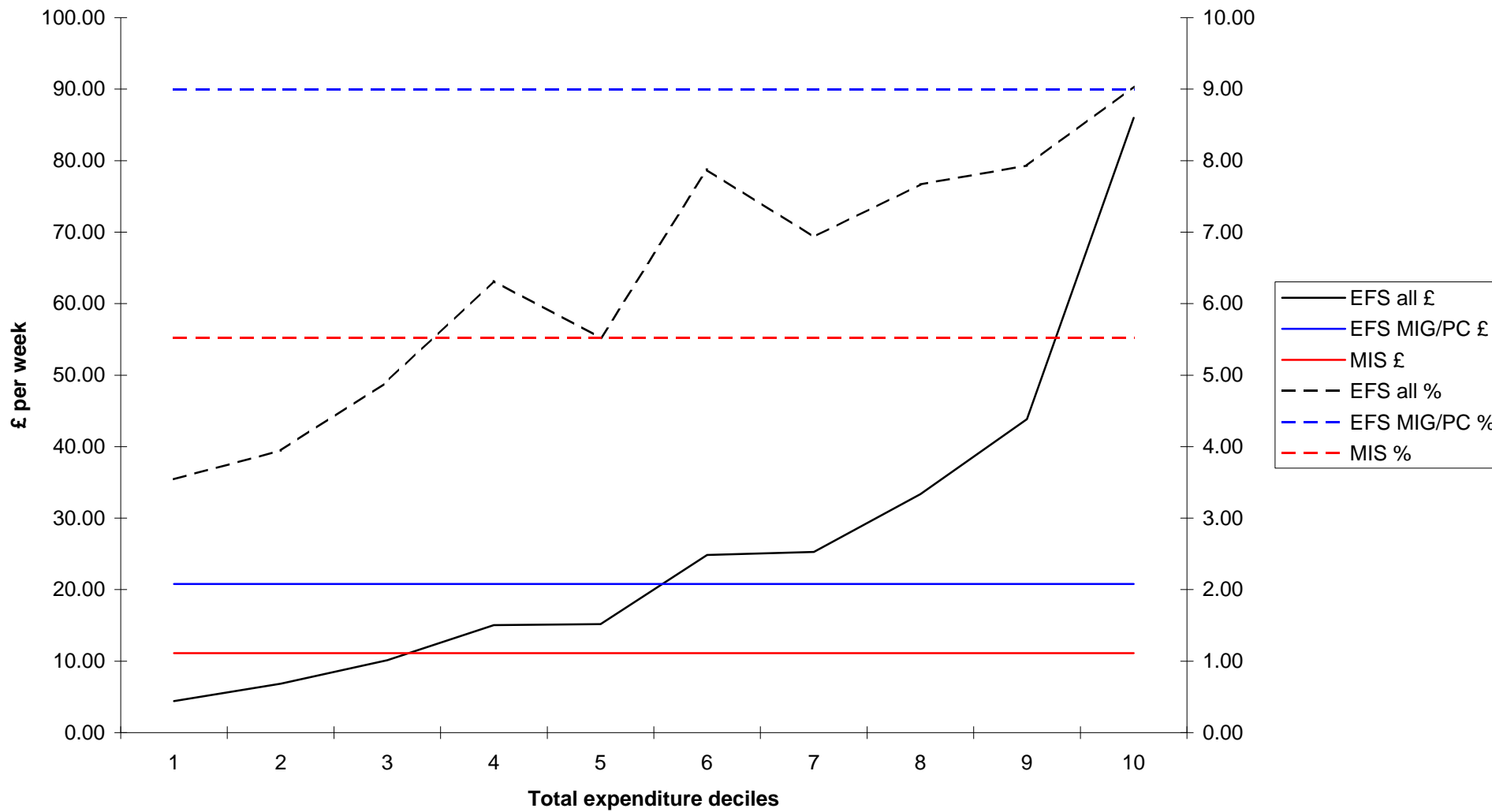
Comparison of MIS and EFS expenditure: fuel



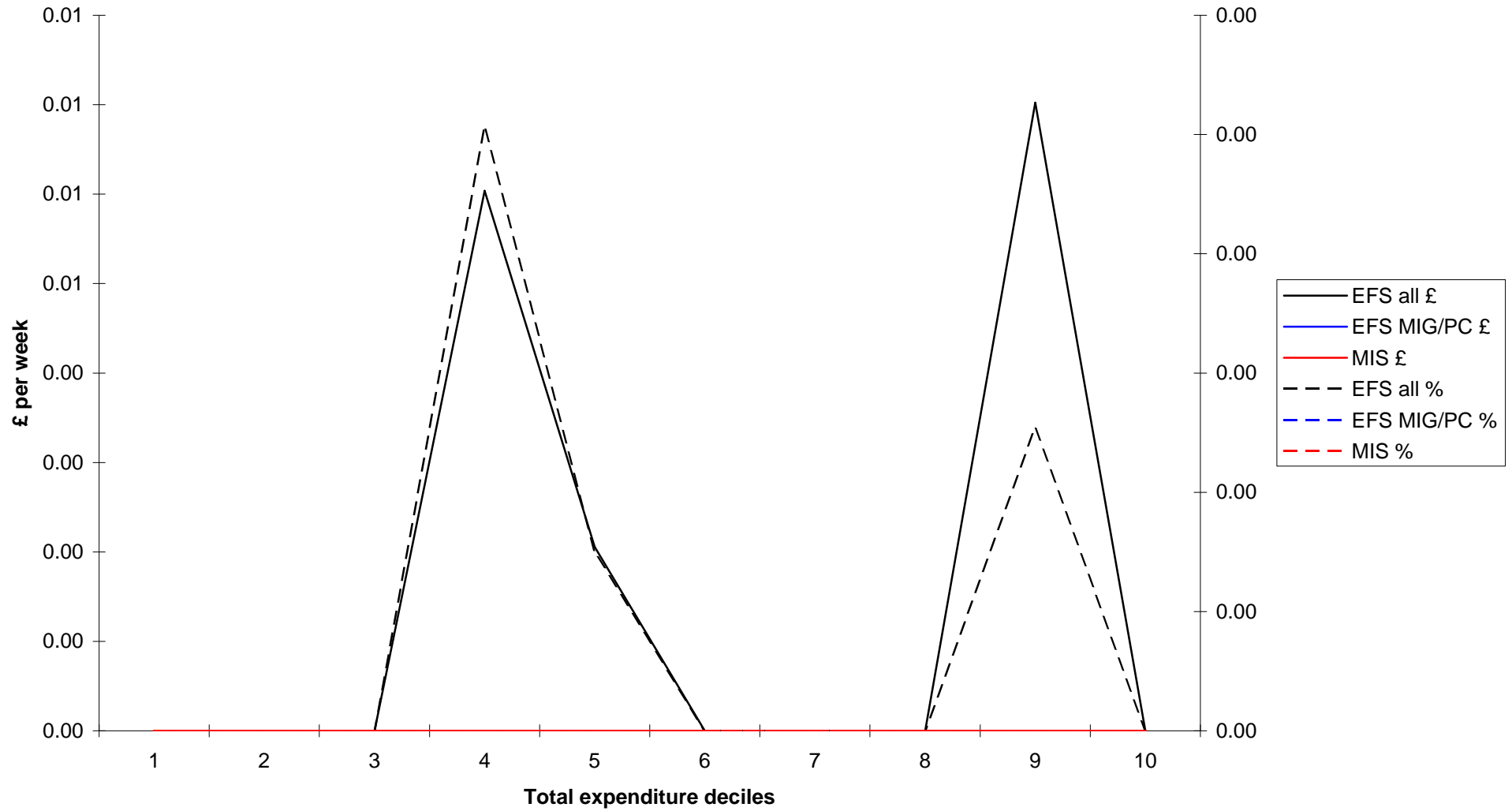
Comparison of MIS and EFS expenditure: other housing costs



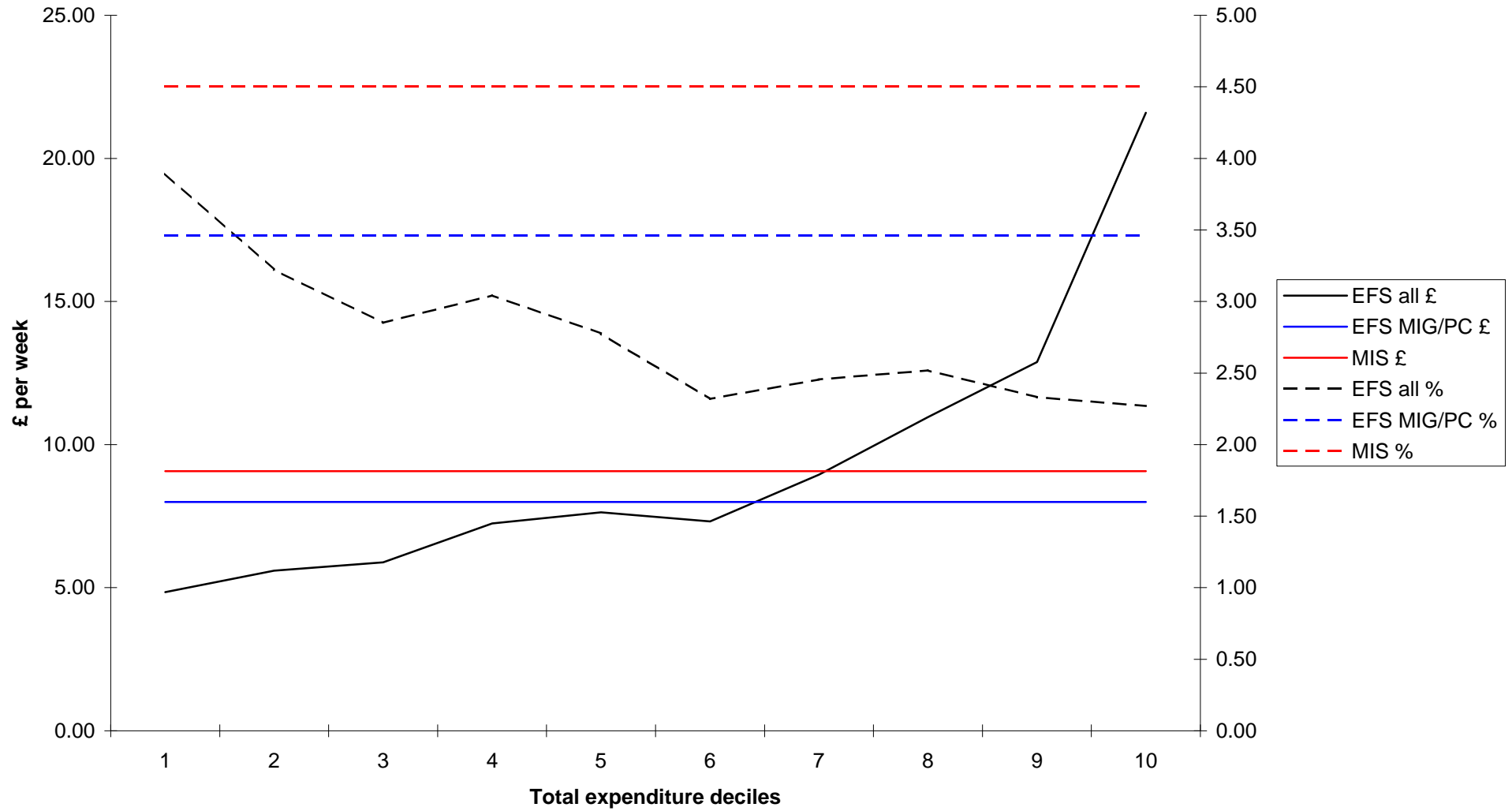
Comparison of MIS and EFS expenditure: household goods



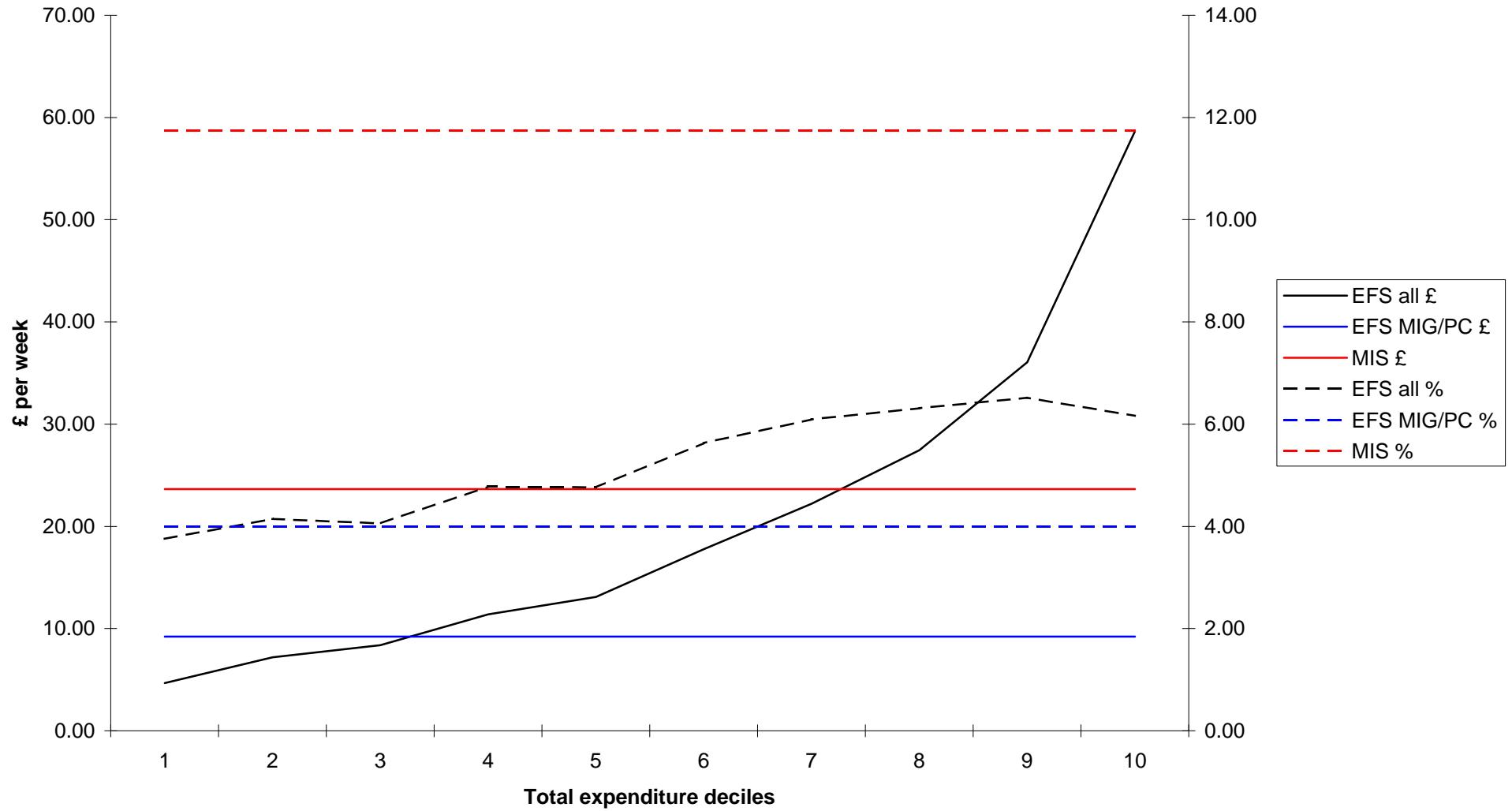
Comparison of MIS and EFS expenditure: childcare



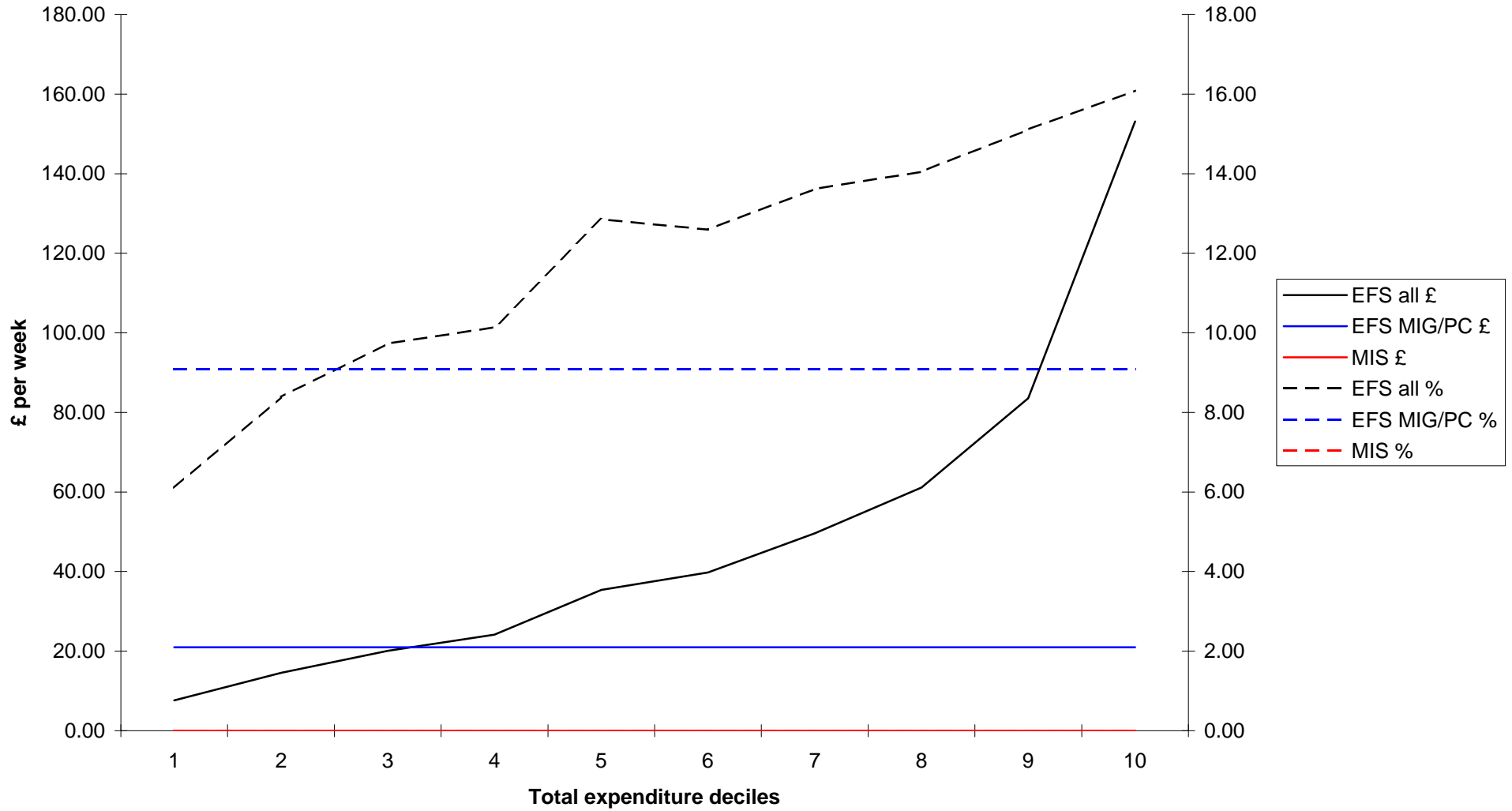
Comparison of MIS and EFS expenditure: household services



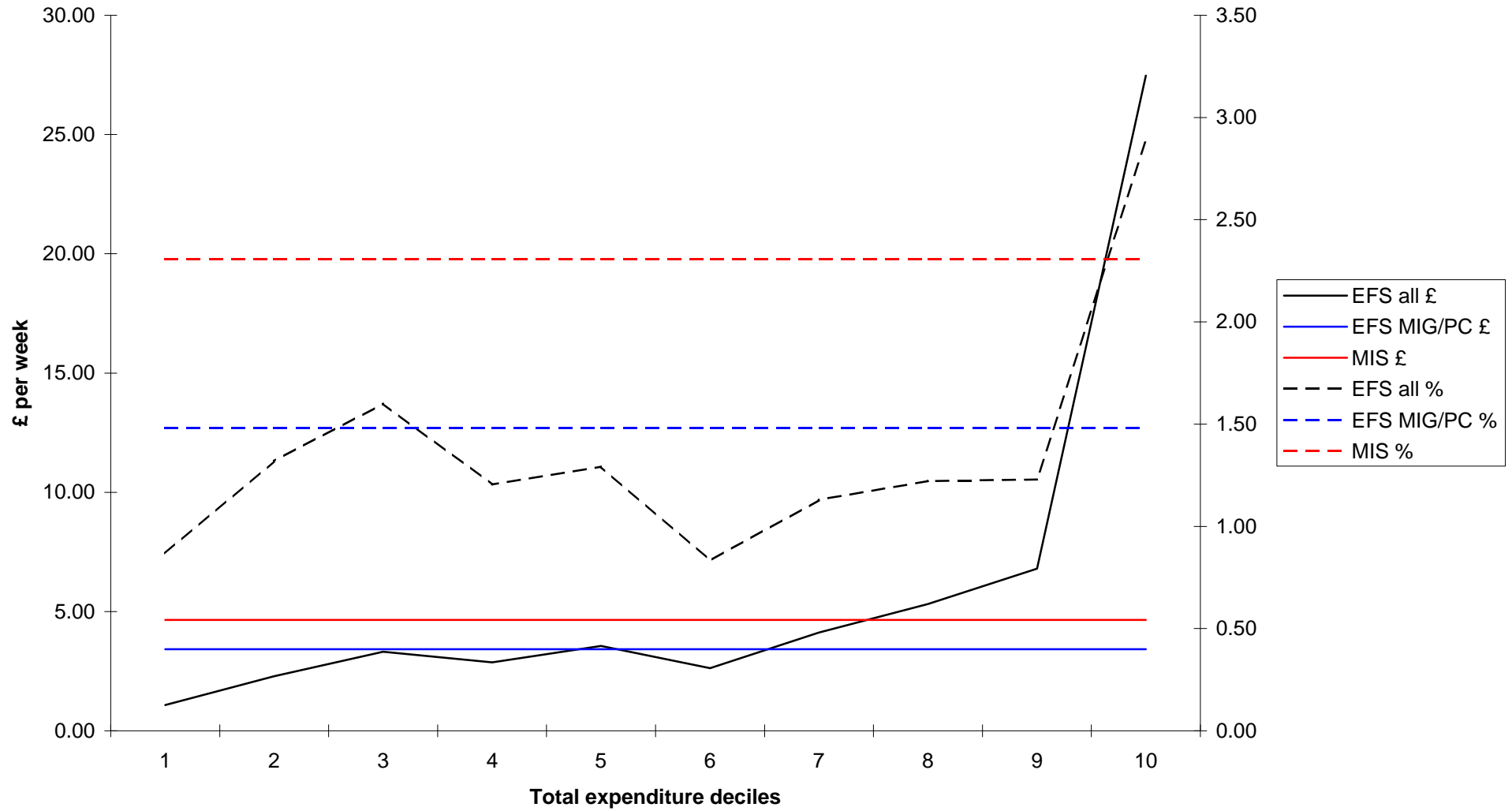
Comparison of MIS and EFS expenditure: personal goods and services



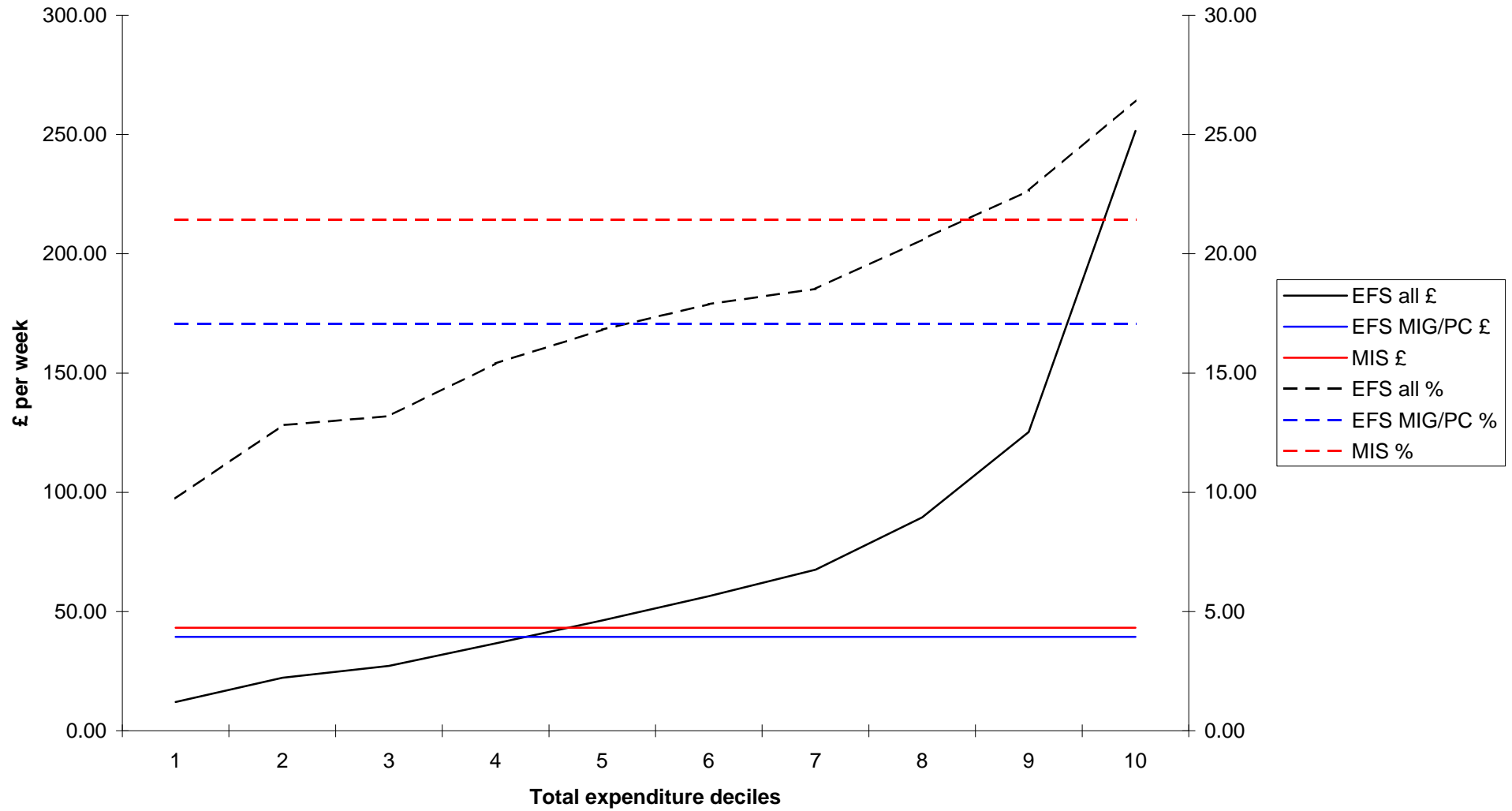
Comparison of MIS and EFS expenditure: motoring



Comparison of MIS and EFS expenditure: other travel costs



Comparison of MIS and EFS expenditure: leisure



Comparison of MIS and EFS expenditure: housing (not included in total budget)

